



***Fellows Riverside Gardens
Presentation***

Andrew C. Pratt

Gardens Director

4-12-21

Contents

- Mill Creek MetroParks (MCMP) Mission Statement
- Fellows Riverside Gardens (FRG) Mission Statement
- Friends of Fellows Riverside Gardens (FFRG) Mission Statement
- Master/Strategic Plan
- Department Organization
- Department Budget
- Department Responsibilities
- Questions



Mill Creek MetroParks Mission Statement

The mission of Mill Creek MetroParks is to provide park, recreational, educational and open space facilities of regional significance.

In fulfilling this mission our objectives are:

- To be responsive to community needs
- To be environmentally sound
- To be adaptable
- To be economically feasible

Link to Mission Statement:

<http://www.millcreekmetroparks.org/contact/about/mission-statement/>



Fellows Riverside Gardens

Fellows Riverside Gardens

Mission Statement

Fellows Riverside Gardens a living museum operated by Mill Creek MetroParks, cultivates the connection between people and plants, promotes environmental stewardship, and serves as an urban horticultural oasis adding quality to the Mahoning Valley community. The Gardens provide botanical plant collections, seasonal floral displays, educational programs and exceptional visitor experiences.

Link to website:

<https://www.millcreekmetroparks.org/visit/places/mill-creek-park/fellows-riverside-gardens/>



Fellows Riverside Gardens



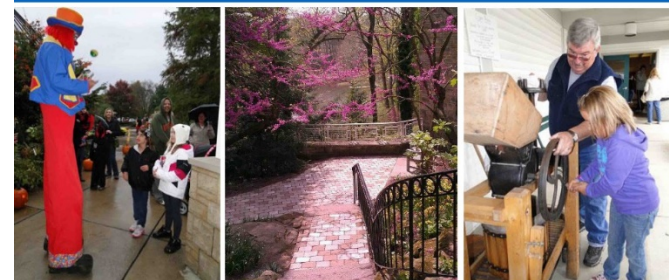
Strategic Master Plan

■ Chapter 7: Implementation Plan

Fellows Riverside Gardens

VISION: “Our vision is to be the premier public garden attraction in the region.

GOAL: “Fellows Riverside Gardens will provide the Mahoning County community the highest level collection of quality plants, gardens, and educational services that creates community pride as a valued public asset while connecting people with plants.

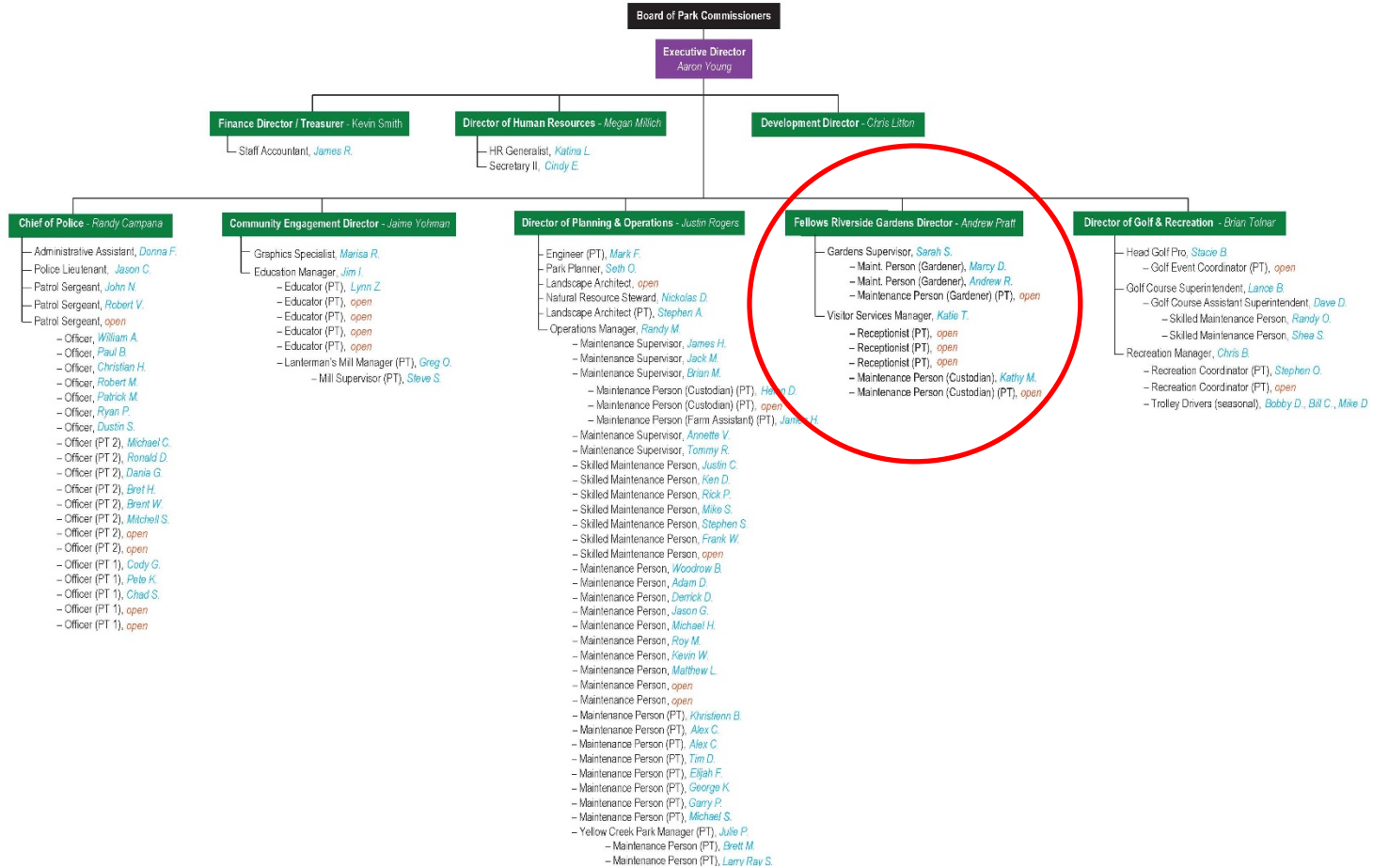


Link to Strategic Master Plan:
<http://www.millcreekmetroparks.org/wp-content/uploads/2013/11/Mill-Creek-MetroParks-Strategic-Master-Plan-FINAL.pdf>



Fellows Riverside Gardens

Department Organization



Fellows Riverside Gardens

Department Organization

- Andrew C. Pratt, Gardens Director
 - Employed since January 2015 (6 years, 3 months)
 - 24 years of experience in Horticulture, Arboriculture, Gardens Management
 - Bachelors degree in Horticulture from The Ohio State University
 - Masters degree in Biology from Miami University
 - ISA Certified Arborist

- Sarah Spetsios, Gardens Supervisor
 - Employed since March 2018 (3 years)
 - 23 years of experience in landscape management
 - Bachelors degree in Biology from Cornerstone University

- Marcia “Marcy” Dubec, Gardener
 - Employed since March 2002 (19 years)
 - Associates degree in Horticulture from Kent State University

- Andrew “Andy” Russell, Gardener
 - Employed since March 2014 (7 years)
 - Associates degree in Horticulture from Kent State University

- Kathy Montelone, Maintenance Person (Custodian)
 - Employed since August 2002 (18 years, 10 months)

- Emily Detwiler, Receptionist
 - Employed since March 2017 (4 years)
 - Associates of Business from Ohio Valley College of Technology

- Mary Sue Grenga, Receptionist
 - Employed since August 2019 (1 year, 7 months)
 - Associates of Applied Science in Medical Assisting from YSU



Fellows Riverside Gardens

Department Organization



Andrew



?

VS Manager



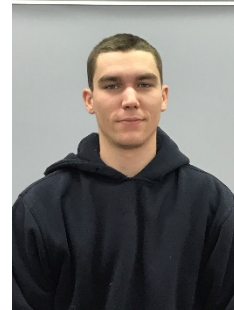
Sarah



Emily/Mary Sue



Kathy



Andy R.



Marcy

Seasonal staff team
6-8



Fellows Riverside Gardens

Department Budget

- Operating Budget
 - \$290,450 or 8% of the total MetroParks budget (\$3,757,144.94).
- Salaries & Wages
 - \$532,215.40 or 9% of the total budget equaling \$5,816,962.02



Department Responsibilities

Outline

- Care and cultivation of 12 acres of outdoor gardens.
- Care and cultivation of the D.D. & Velma Davis Education and Visitor Center.
- Provide venues to host educational classes, life celebrations, showers, weddings and business meetings.
- Oversee lease of the Garden Café & Inspired Catering by Kravitz.
- Provide ad hoc horticultural and arboricultural expertise to the Parks' other departments.



Fellows Riverside Gardens

Department Responsibilities

Care and cultivation of 12 acres of outdoor Gardens

- Oversee, maintain and improve all outdoor garden spaces using industry best practices.
- 2020 plantings included:
 - 5 shrubs
 - 11 trees
 - 144 roses
 - 247 perennials
 - 42,100 bulbs for spring bulb display
 - 54,574 annuals for seasonal displays
- Snow and ice management.



Planting new roses in the Rose Garden

Fellows Riverside Gardens

Department Responsibilities



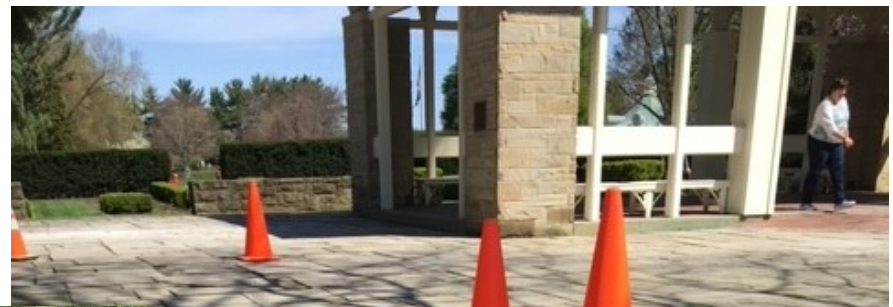
Rose Garden irrigation system renovation - 2017

Department Responsibilities



Earth Day 2019 Ohio buckeye tree planting

Department Responsibilities



South terrace improvement project



Fellows Riverside Gardens

Department Responsibilities



Gazebo Pavilion Painting project - 2019



Fellows Riverside Gardens

Department Responsibilities



High tunnel annual production for seasonal displays

Fellows Riverside Gardens

Department Responsibilities

Care and cultivation of the D.D. & Velma Davis Education and Visitor Center

- Oversee, maintain and improve all indoor spaces using industry best practices incorporating sustainable technologies to reduce the bottom line.
- Several energy efficiency improvement projects over the last six years.



Rossi Auditorium floor resurfacing Dec. 2020

Fellows Riverside Gardens

Department Responsibilities



Café terrace observation tower painting - 2019



White Garden Terrace tile repair - 2017

Department Responsibilities



HVAC/geothermal energy improvement project – 2020

Department Responsibilities

Provide venues to host educational classes, life celebrations, showers, weddings and business meetings.

Facilitate all bookings from start to finish.

In 2019

- 11 café rentals
- 26 Radius Room reservations
- 36 wedding receptions
- 78 auditorium reservations
- 112 classroom reservations
- 116 wedding ceremonies



Fellows Riverside Gardens

Department Responsibilities

- Venue for annual events such as:
 - ***The Jewels of Winter – Orchid Show***
 - Lunch with a Leprechaun
 - Daffodil Weekend
 - FFRG Spring Plant Sale
 - Mother's Day Brunch
 - FFRG Garden Party
 - FFRG Autumn Plant Sale
 - Pumpkin Walk at Twilight
 - Winter Celebration
 - Rotating art exhibits in Weller Gallery



The Jewels of Winter – Orchid Show

Fellows Riverside Gardens

Department Responsibilities

- Venue for annual events such as:
 - The Jewels of Winter – Orchid Show
 - Lunch with a Leprechaun
 - ***Daffodil Weekend***
 - FFRG Spring Plant Sale
 - Mother's Day Brunch
 - FFRG Garden Party
 - FFRG Autumn Plant Sale
 - Pumpkin Walk at Twilight
 - Winter Celebration
 - Rotating art exhibits in Weller Gallery



Daffodil weekend

Fellows Riverside Gardens

Department Responsibilities

- Venue for annual events such as:
 - The Jewels of Winter – Orchid Show
 - Lunch with a Leprechaun
 - ***Daffodil Weekend***
 - FFRG Spring Plant Sale
 - Mother's Day Brunch
 - FFRG Garden Party
 - FFRG Autumn Plant Sale
 - Pumpkin Walk at Twilight
 - Winter Celebration
 - Rotating art exhibits in Weller Gallery



Daffodil weekend

Department Responsibilities

- Venue for annual events such as:
 - The Jewels of Winter – Orchid Show
 - Lunch with a Leprechaun (new in 2018)
 - Daffodil Weekend
 - **FFRG/MCMP Spring Plant Sale**
 - Mother's Day Brunch
 - FFRG Garden Party
 - FFRG/MCMP Autumn Plant Sale
 - Pumpkin Walk at Twilight
 - Winter Celebration
 - Breakfast with Santa (new in 2018)
 - Rotating art exhibits in Weller Gallery



FFRG/MCMP Spring Plant Sale

Department Responsibilities

- Venue for annual events such as:
 - The Jewels of Winter – Orchid Show
 - Lunch with a Leprechaun (new in 2018)
 - Daffodil Weekend
 - FFRG/MCMP Spring Plant Sale
 - Mother's Day Brunch
 - **FFRG Garden Party**
 - FFRG/MCMP Autumn Plant Sale
 - Pumpkin Walk at Twilight
 - Winter Celebration
 - Breakfast with Santa (new in 2018)
 - Rotating art exhibits in Weller Gallery



FFRG annual Garden Party

Fellows Riverside Gardens

Department Responsibilities

- Venue for annual events such as:
 - The Jewels of Winter – Orchid Show
 - Lunch with a Leprechaun
 - Daffodil Weekend
 - FFRG Spring Plant Sale
 - Mother's Day Brunch
 - FFRG Garden Party
 - FFRG Autumn Plant Sale
 - ***Pumpkin Walk at Twilight***
 - Winter Celebration
 - Rotating art exhibits in Weller Gallery



Pumpkin Walk at Twilight

Fellows Riverside Gardens

Department Responsibilities

- Venue for annual events such as:
 - The Jewels of Winter – Orchid Show
 - Lunch with a Leprechaun
 - Daffodil Weekend
 - FFRG Spring Plant Sale
 - Mother's Day Brunch
 - FFRG Garden Party
 - FFRG Autumn Plant Sale
 - ***Pumpkin Walk at Twilight***
 - Winter Celebration
 - Rotating art exhibits in Weller Gallery



Pumpkin Walk at Twilight

Fellows Riverside Gardens

Department Responsibilities

- Venue for annual events such as:
 - The Jewels of Winter – Orchid Show
 - Lunch with a Leprechaun
 - Daffodil Weekend
 - FFRG Spring Plant Sale
 - Mother's Day Brunch
 - FFRG Garden Party
 - FFRG Autumn Plant Sale
 - Pumpkin Walk at Twilight
 - **Winter Celebration**
 - Rotating art exhibits in Weller Gallery



Winter Celebration

Fellows Riverside Gardens

Department Responsibilities

- Venue for annual events such as:
 - The Jewels of Winter – Orchid Show
 - Lunch with a Leprechaun
 - Daffodil Weekend
 - FFRG Spring Plant Sale
 - Mother's Day Brunch
 - FFRG Garden Party
 - FFRG Autumn Plant Sale
 - Pumpkin Walk at Twilight
 - **Winter Celebration**
 - Rotating art exhibits in Weller Gallery



Winter Celebration

Department Responsibilities

- Venue for annual events such as:
 - The Jewels of Winter – Orchid Show
 - Lunch with a Leprechaun
 - Daffodil Weekend
 - FFRG Spring Plant Sale
 - Mother's Day Brunch
 - FFRG Garden Party
 - FFRG Autumn Plant Sale
 - Pumpkin Walk at Twilight
 - *Winter Celebration*
 - ***Rotating art exhibits in Weller Gallery***



Fellows Riverside Gardens

Department Responsibilities

- Oversee lease of the Garden Café & Inspired Catering by Kravitz.



Gardens Café

Fellows Riverside Gardens

Department Responsibilities

cont...

- Provide ad hoc horticultural and arboricultural expertise to the Parks' other departments.
 - Ex: First positive identification of Beech leaf disease found in Mahoning county.
 - Ex: First hemlock wooly adelgid confirmation confirmed in Mahoning County via horticulture network.



Fellows Riverside Gardens

Thank you:

- To you our MetroParks Board, Friends of Fellow Riverside Gardens, the MetroParks Foundation and our many other allies that support us and help us achieve our mission and offer a respite in the Valley.
- To our countless volunteers.
- To our wonderful, talented staff at the Gardens who take great pride in their work and make the Gardens a beautiful, place to visit every day!



Fellows Riverside Gardens

Comments or Questions?



EXPLORE. EXPERIENCE. ENJOY.

millcreekmetroparks.org

