

# White-tailed Deer in Mill Creek MetroParks

*Photographic Log – 2022*



*Board of Park Commissioners*

*7574 Columbiana-Canfield Rd.*

*Canfield, Ohio 44406*

*Mahoning County, Ohio*



## Introduction

These photograph locations highlight examples of deer browse damage in forested and/or landscaped areas throughout the MetroParks, with the most notable impacts being visible at Hitchcock Woods, Huntington Woods, and Mill Creek Park. Negative ecological impacts commonly associated with an overabundance of white-tailed deer such as visible browse lines, limited forest understory growth, and a prevalence of invasive species are commonplace throughout MetroParks facilities, consistent with the data collected from the January 2022 population survey.

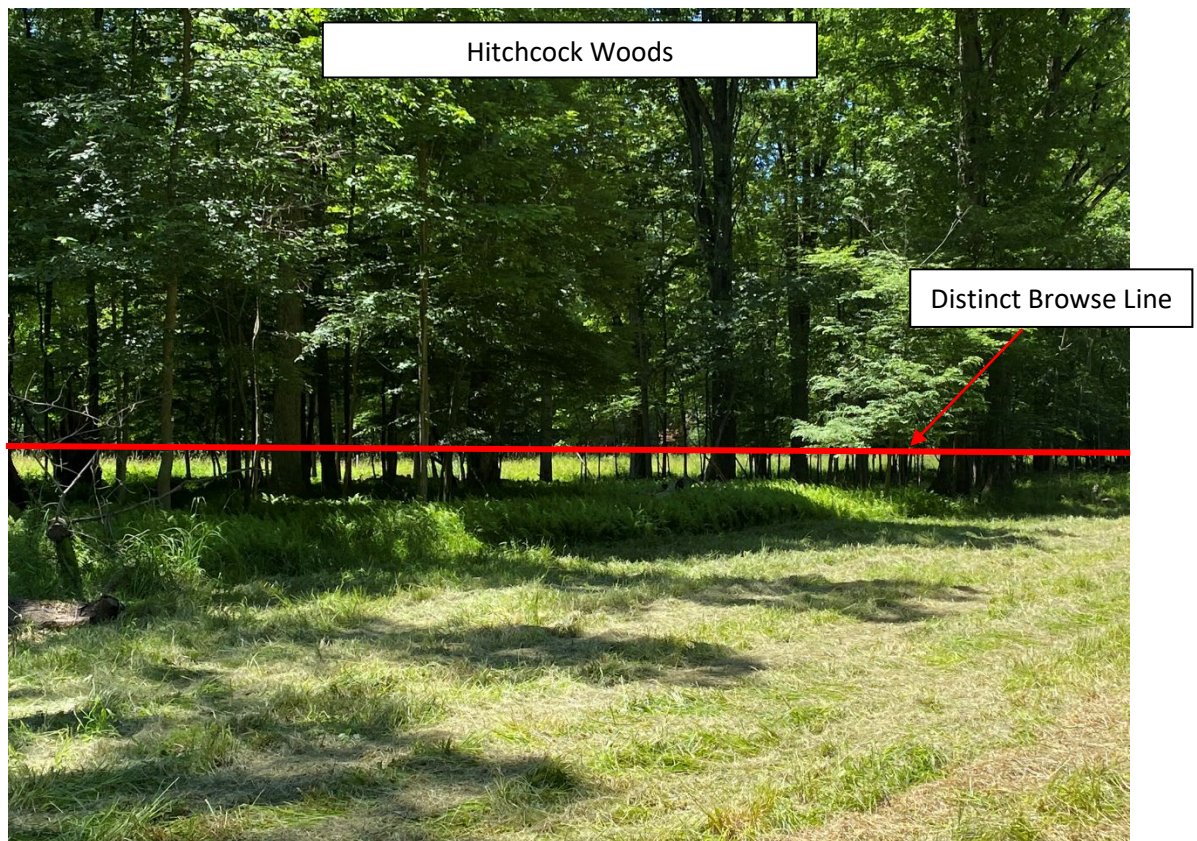
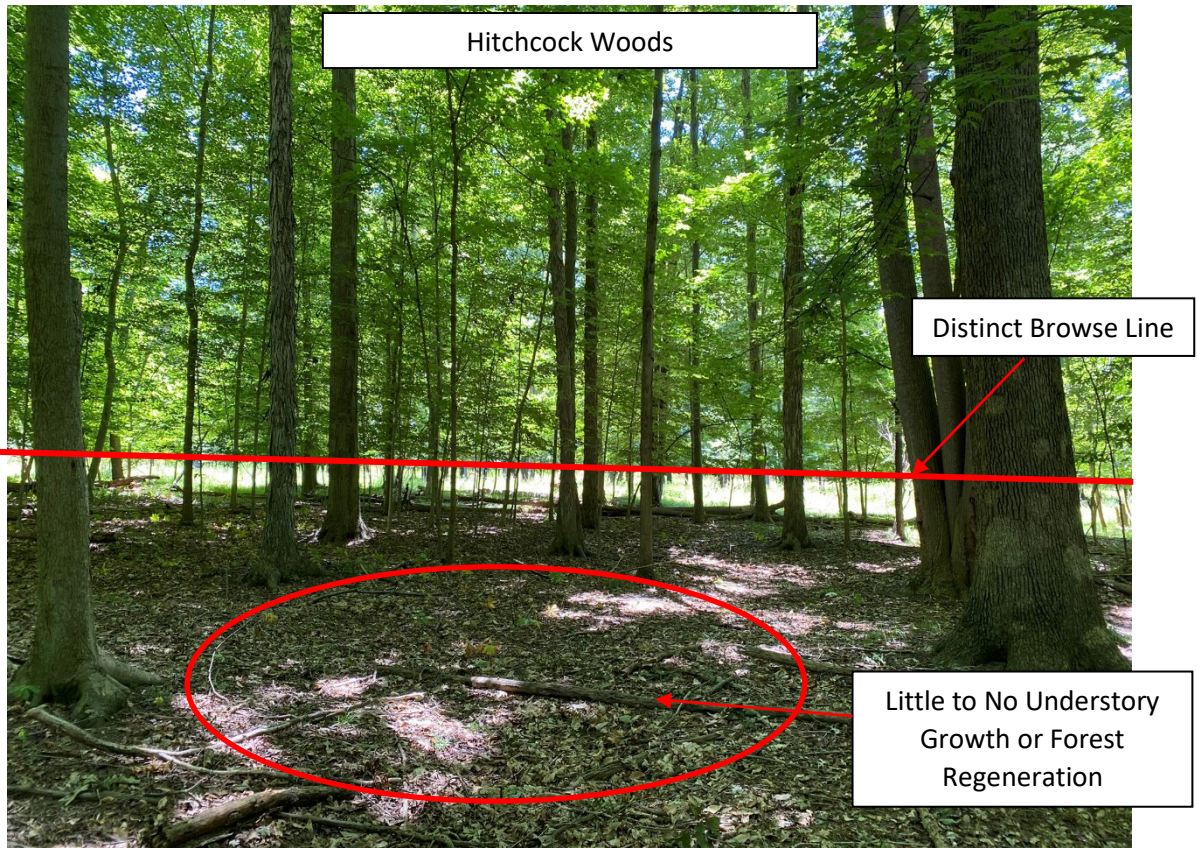
## January 2022 Aerial Infrared Survey Results:

				Thermal Signatures Observed within Park Boundaries			
	Park	Park Size (acres)	Park size (sq miles)	Count	Acres per Deer	Deer per Acre	Deer per Sq Mile
Central	Mill Creek Park	1,626	2.54	903	1.80	0.56	355
	Hitchcock Woods	689	1.08	429	1.61	0.62	398
	Huntington Woods	383	0.60	354	1.08	0.92	592
	Mill Creek Wildlife Sanctuary	482	0.75	267	1.81	0.55	355
	Collier Preserve	303	0.47	124	2.44	0.41	262
East	McGuffey Wildlife Preserve	78	0.12	48	1.63	0.62	394
	Yellow Creek	76	0.12	80	0.95	1.05	674
	Springfield Forest	89	0.14	69	1.29	0.78	496
	Cranberry Run Headwaters	27	0.04	19	1.42	0.70	450
West	Vickers Nature Preserve	262	0.41	116	2.26	0.44	283
	Sebring Woods	39	0.06	37	1.05	0.95	607
	Egypt Swamp Preserve	75	0.12	54	1.39	0.72	461
	Sawmill Creek	167	0.26	141	1.18	0.84	540
	MetroParks Farm	402	0.63	197	2.04	0.49	314
	Hawkins Marsh	161	0.25	97	1.66	0.60	386
Totals and Averages:		4,859	7.59	2,935	1.66	0.60	387

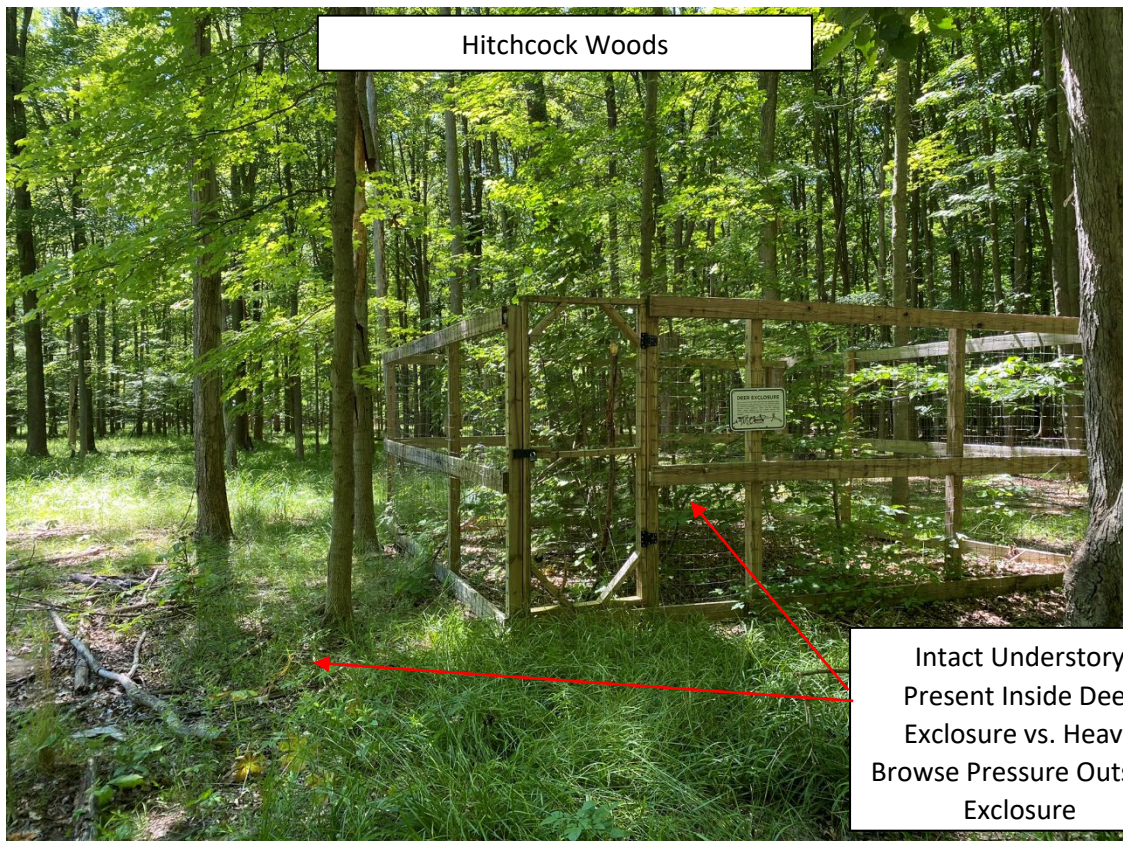
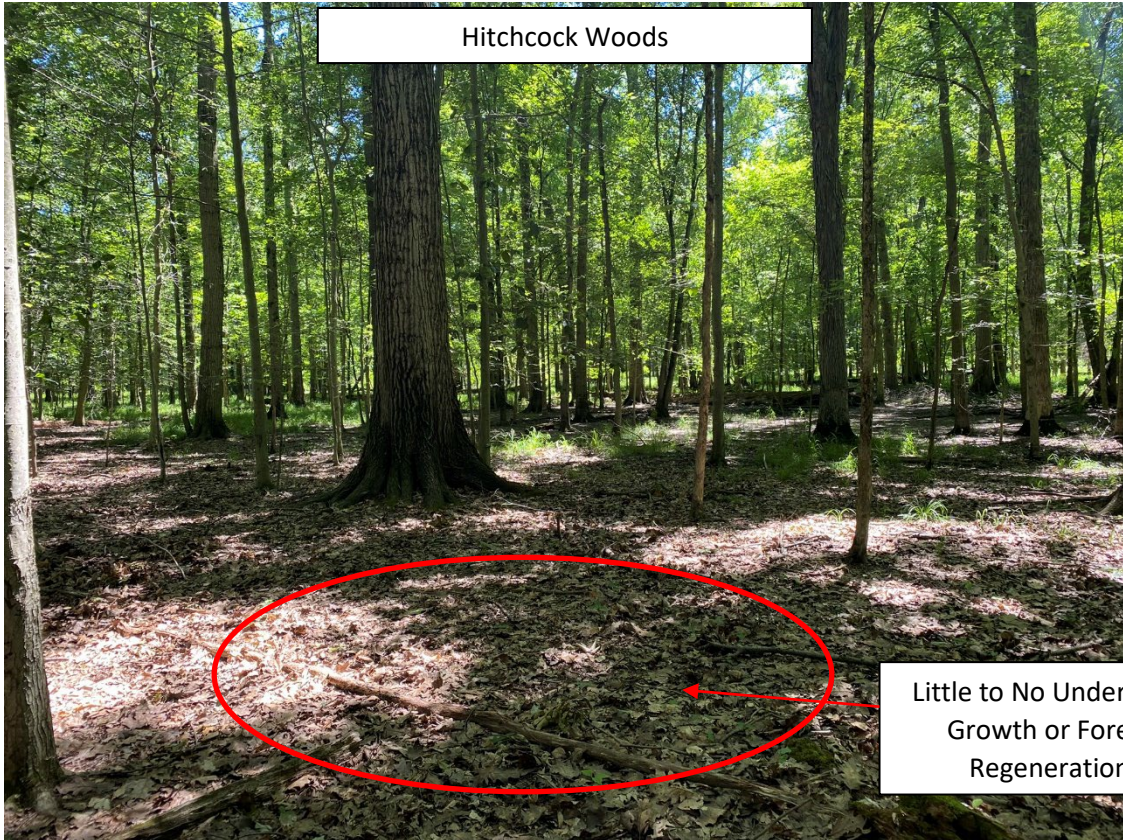
Recommended Population Densities Are 10-20 Deer/Mi<sup>2</sup> to Remain Below Ecological Carrying Capacity.

**Our Results Average 387 Deer/Mi<sup>2</sup>**

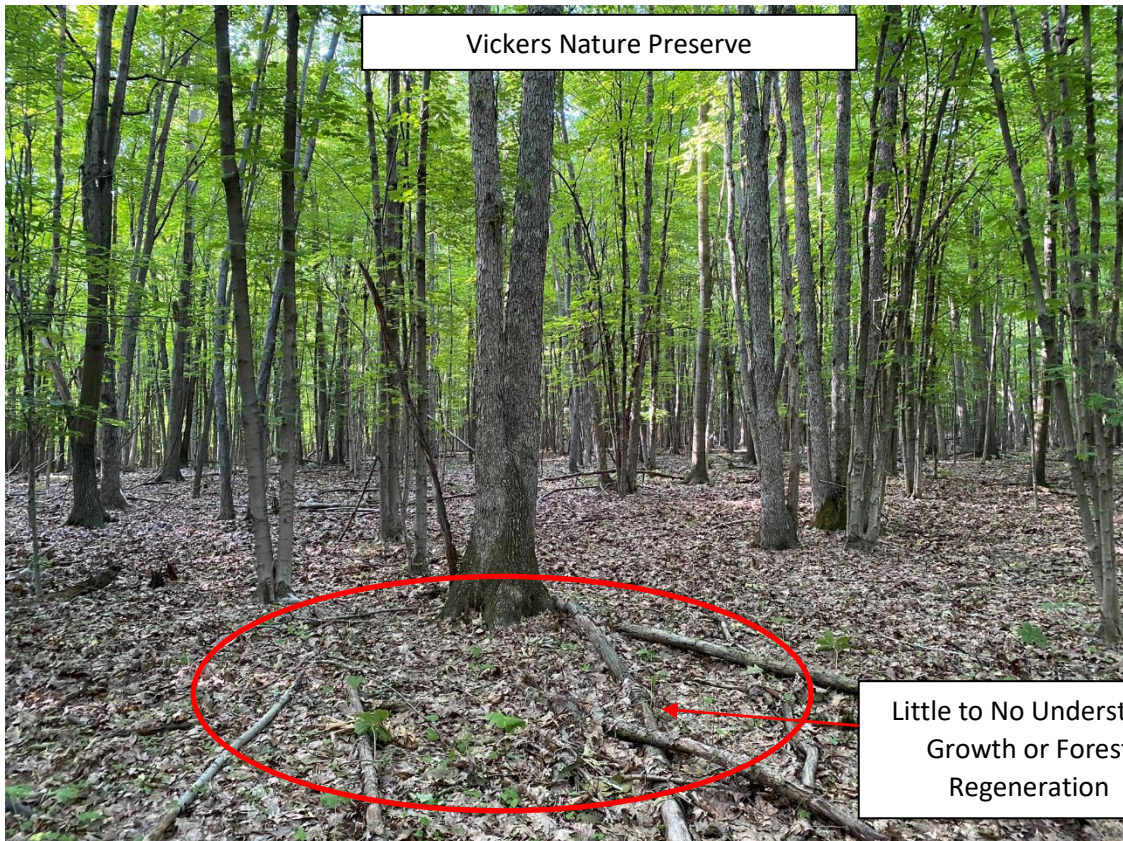
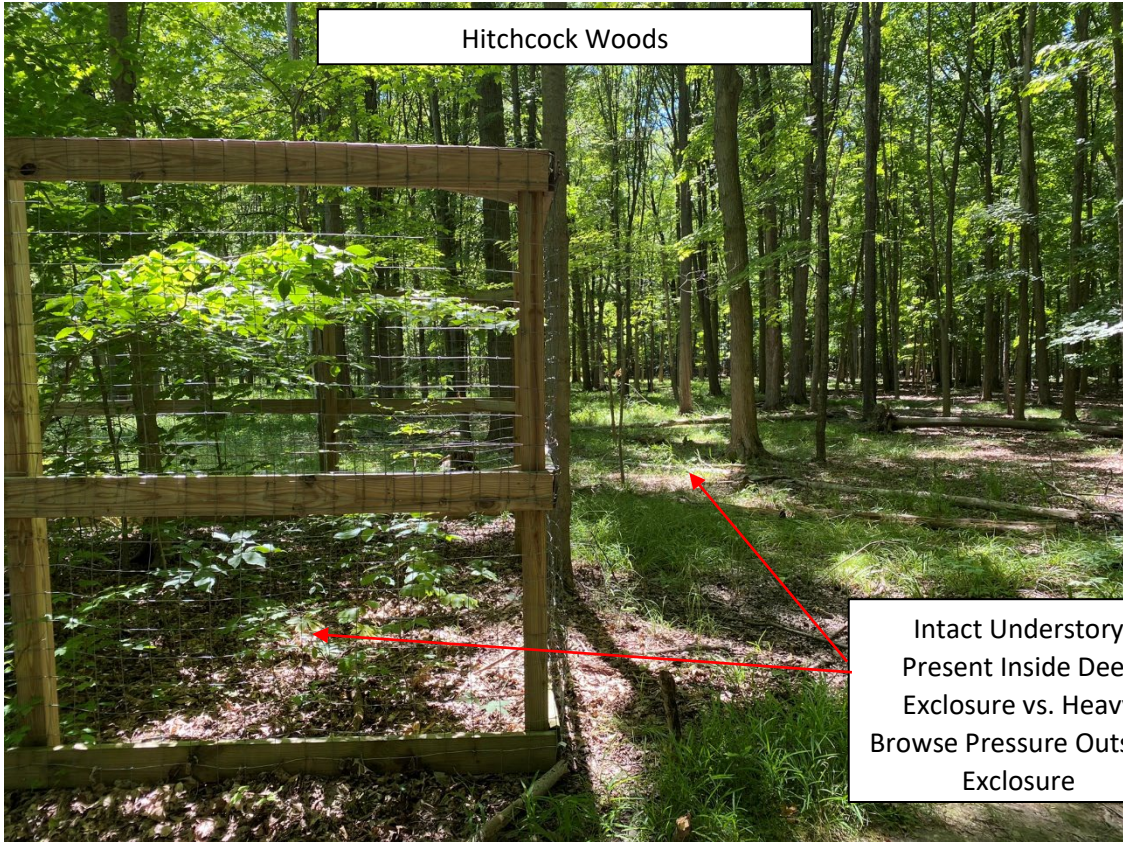




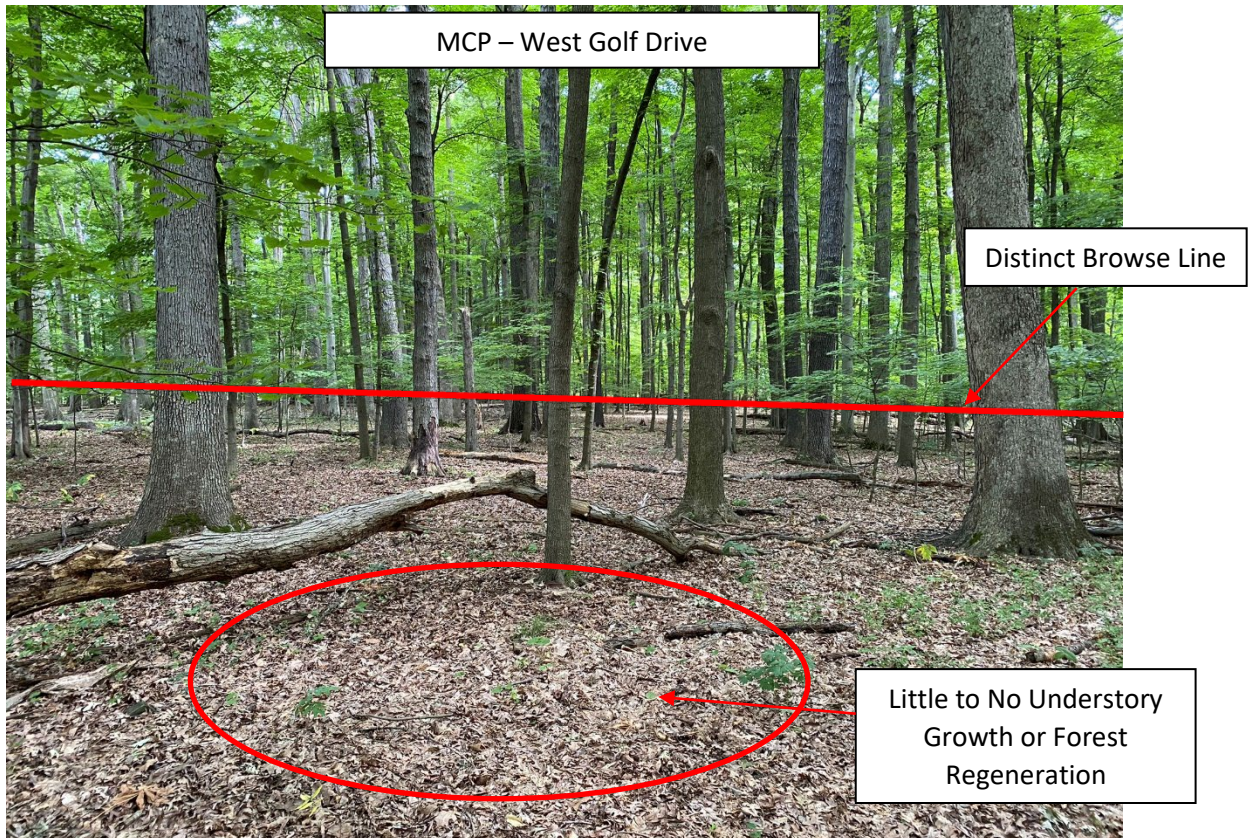
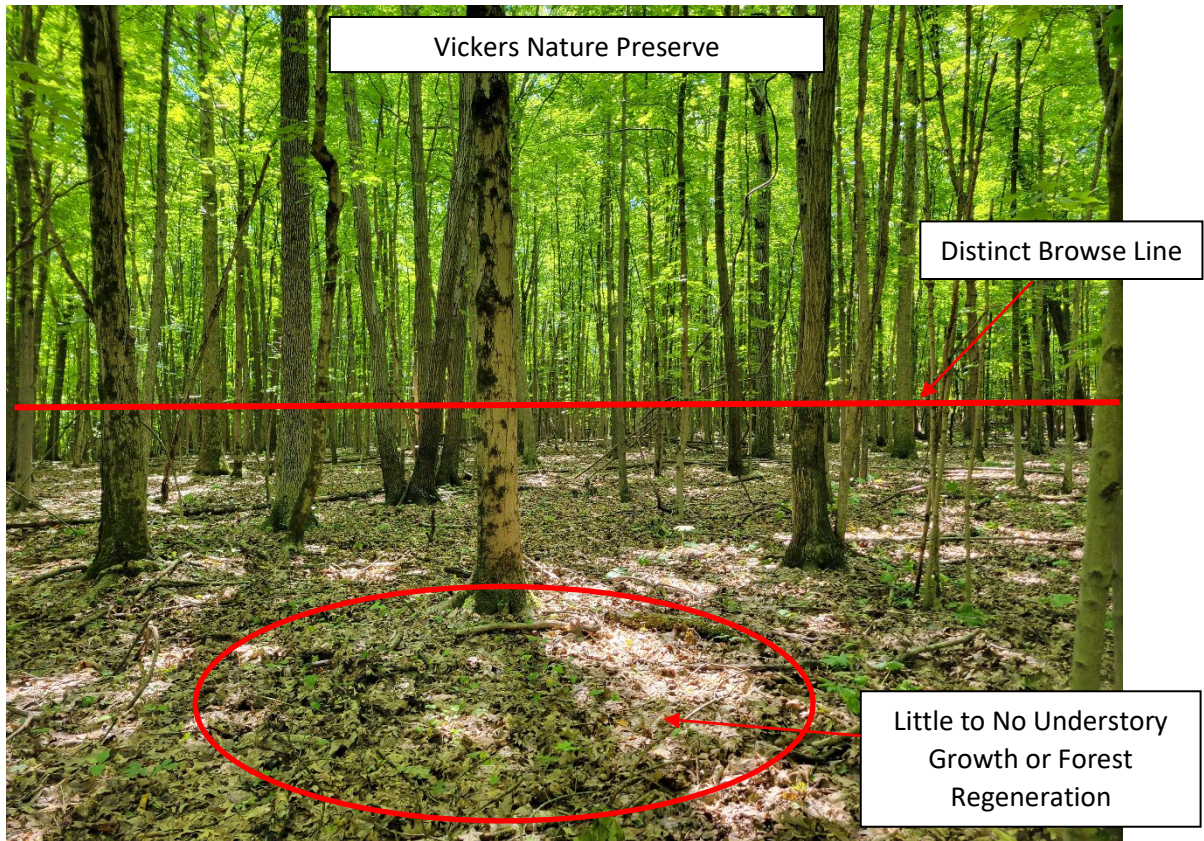




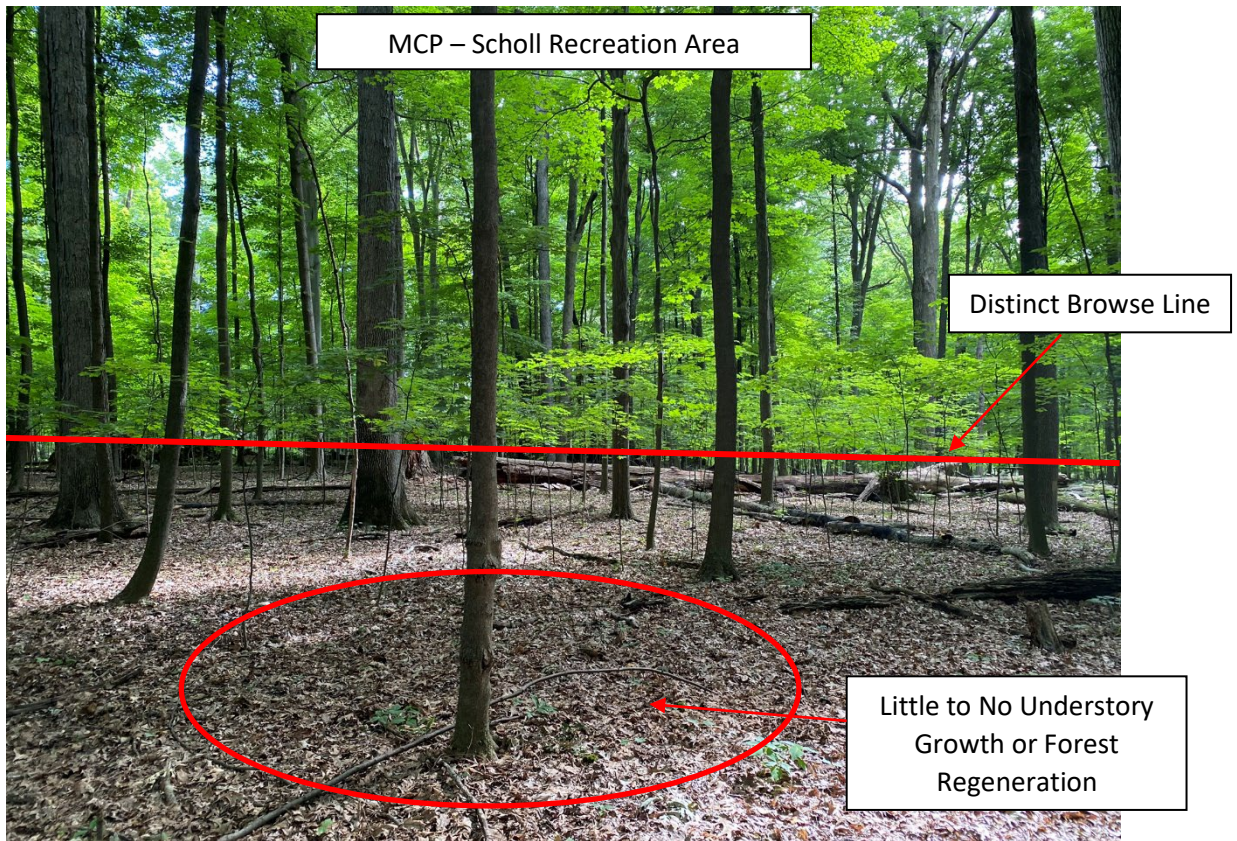




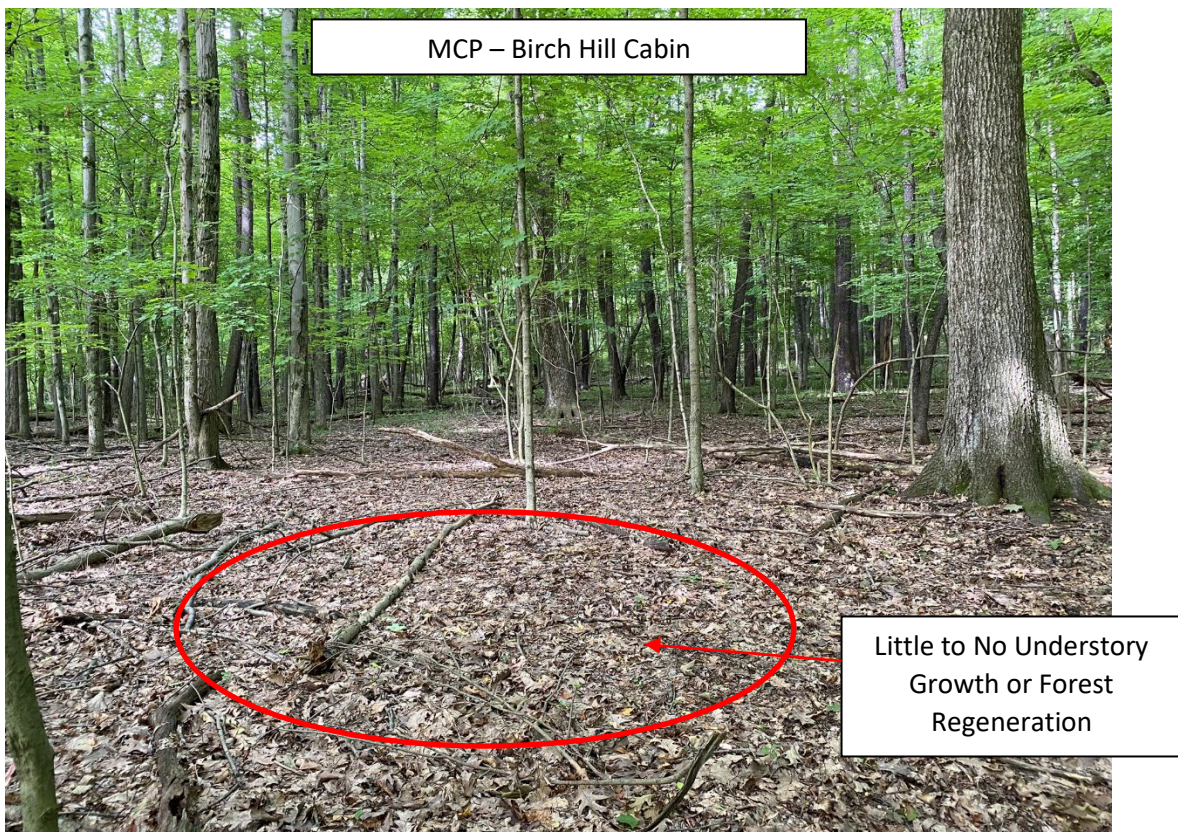
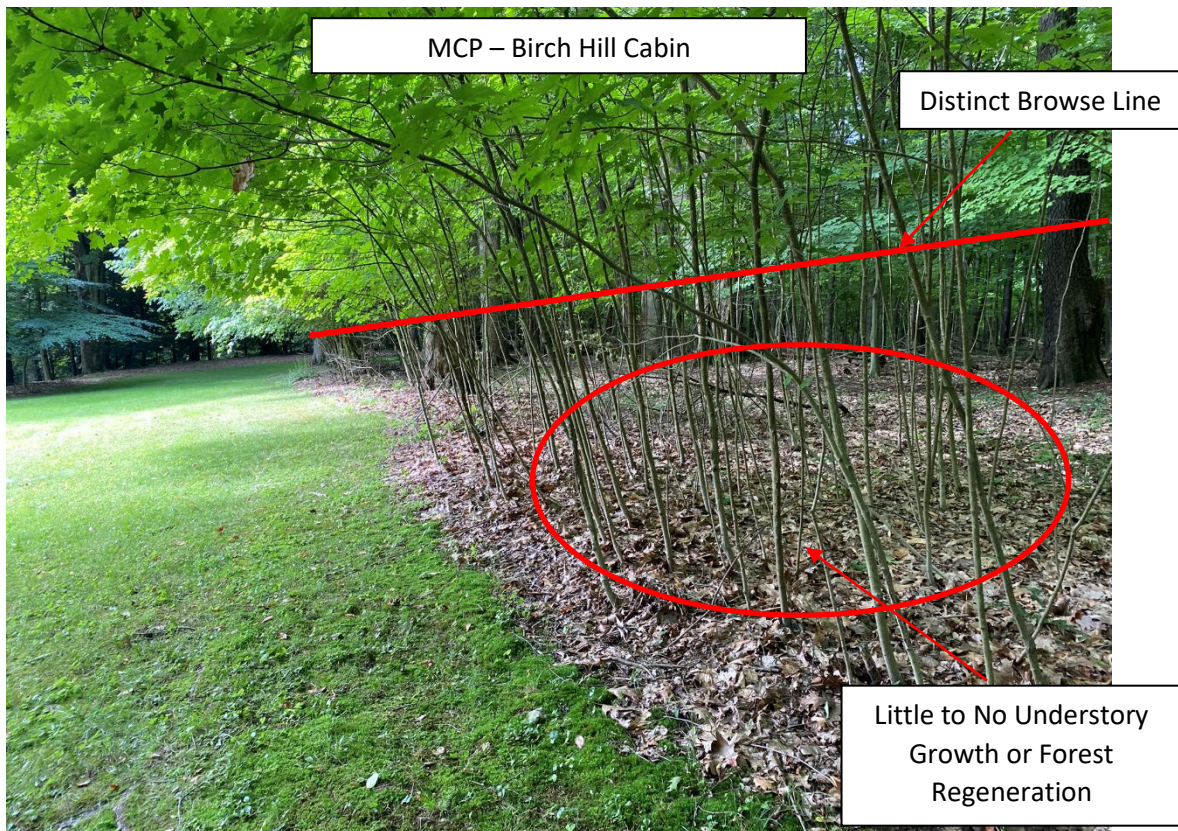










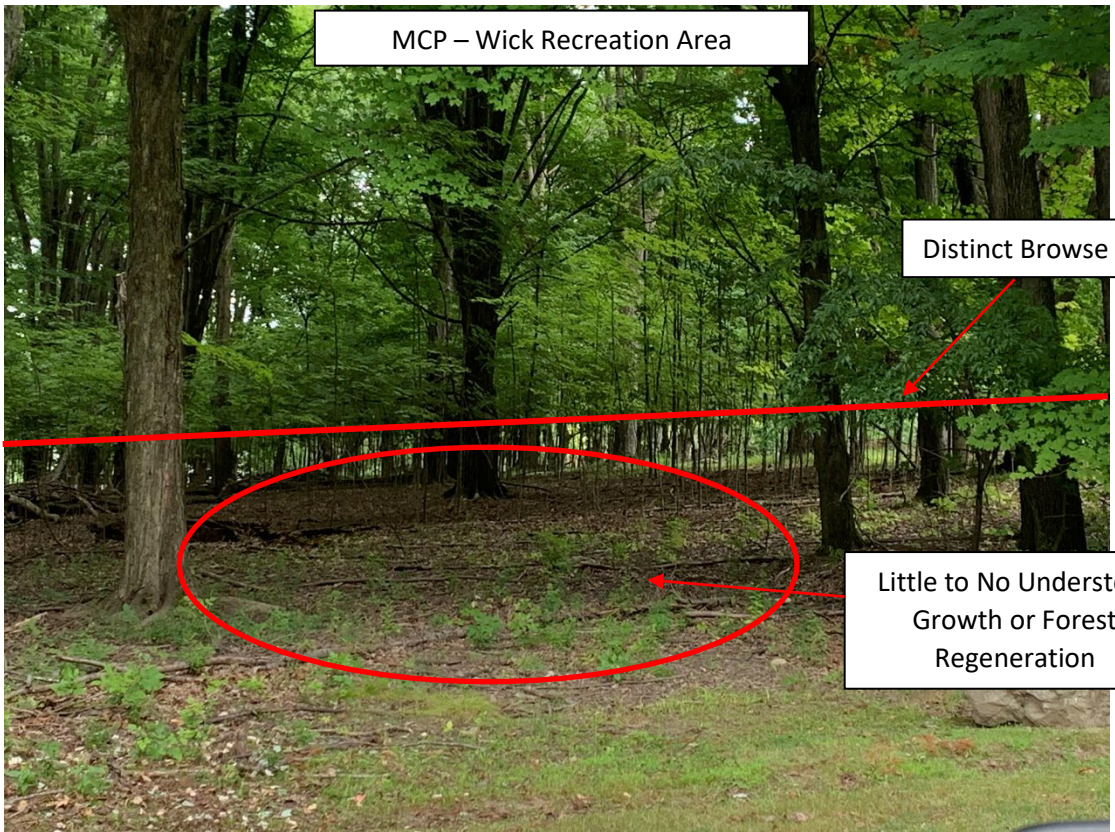






MCP – Wick Recreation Area

Little to No Understory Growth or Forest Regeneration

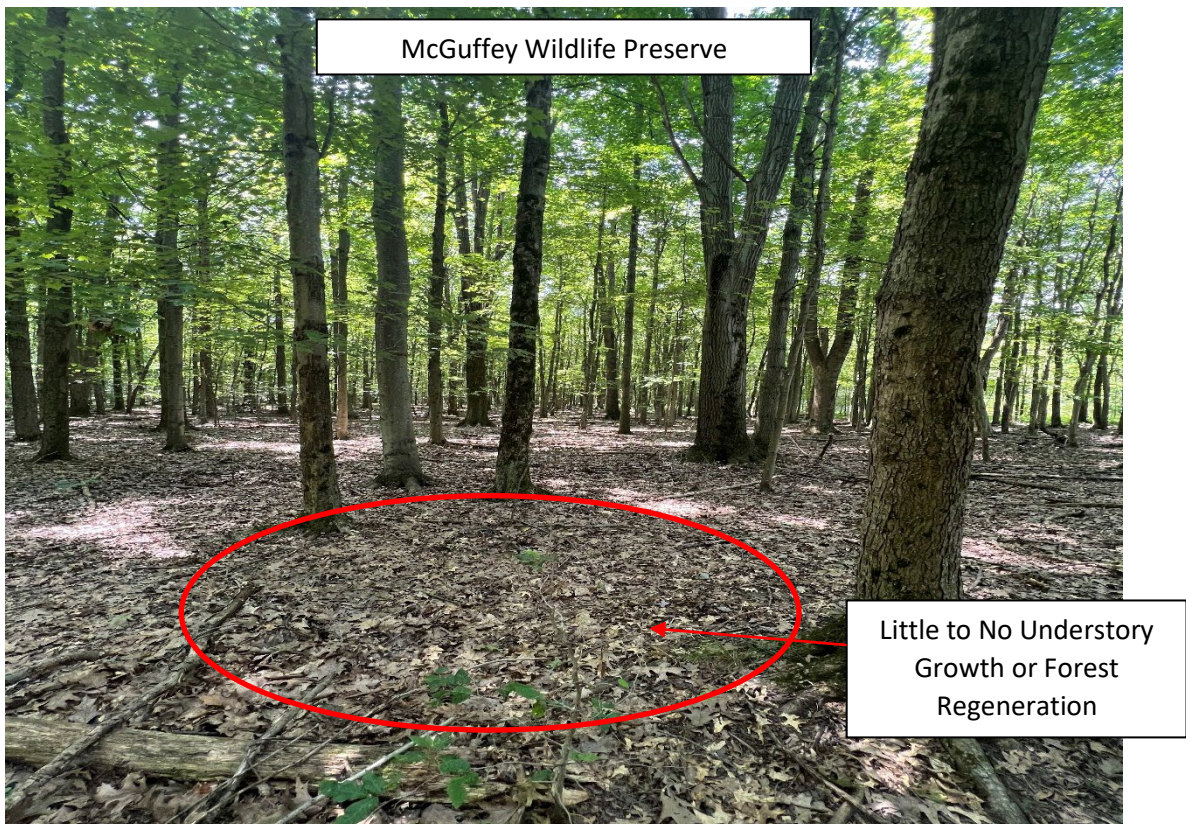
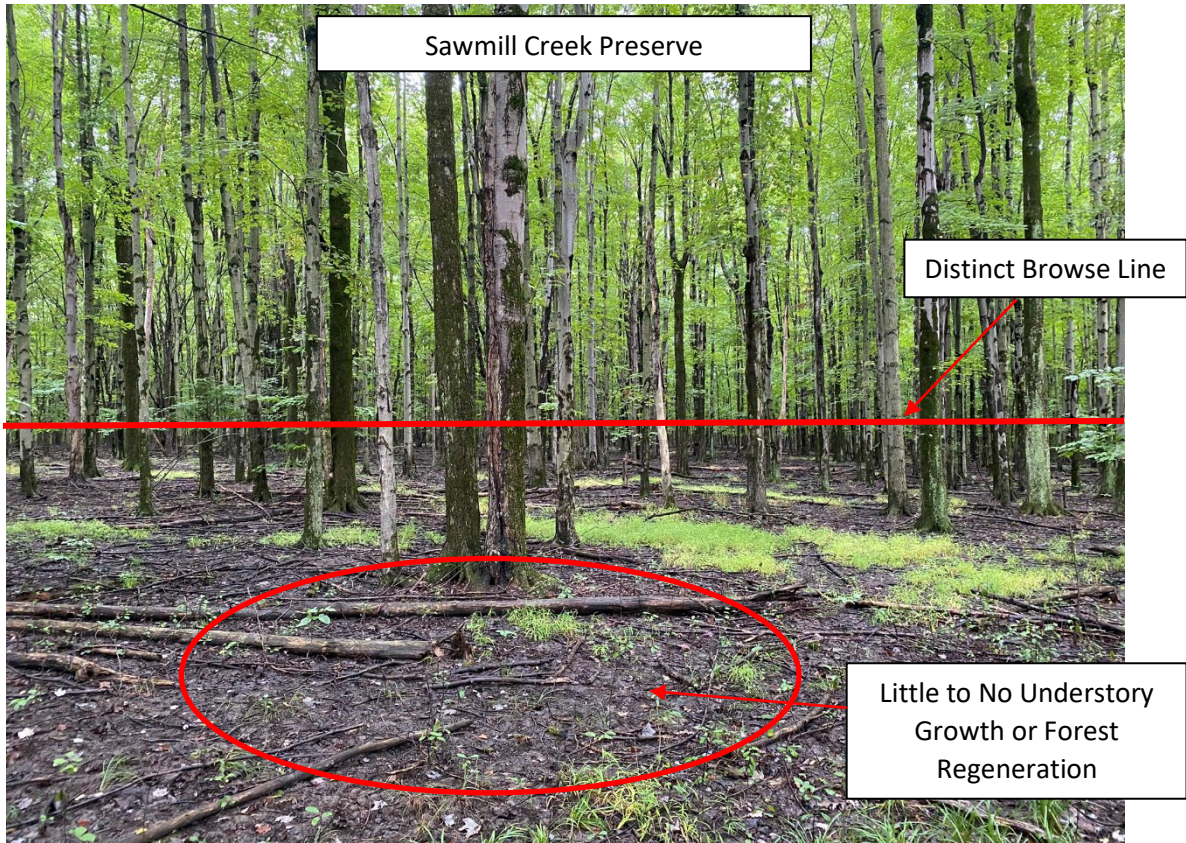


MCP – Wick Recreation Area

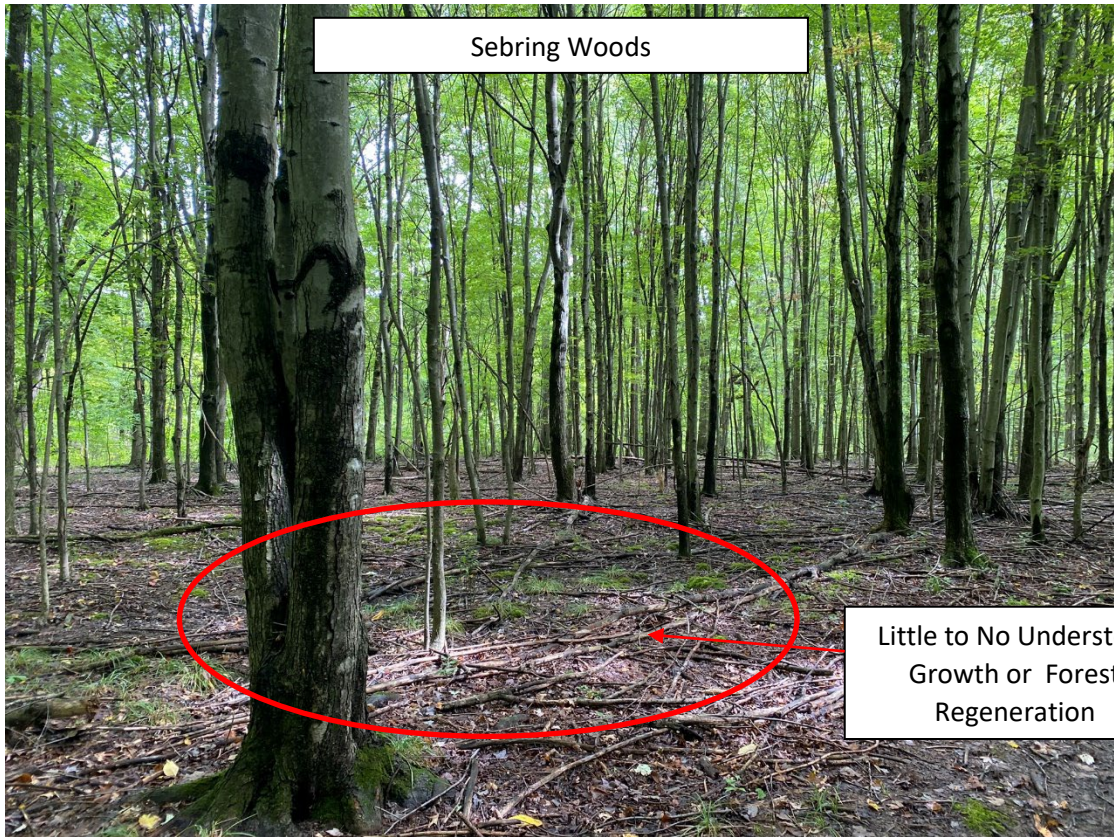
Distinct Browse Line

Little to No Understory Growth or Forest Regeneration



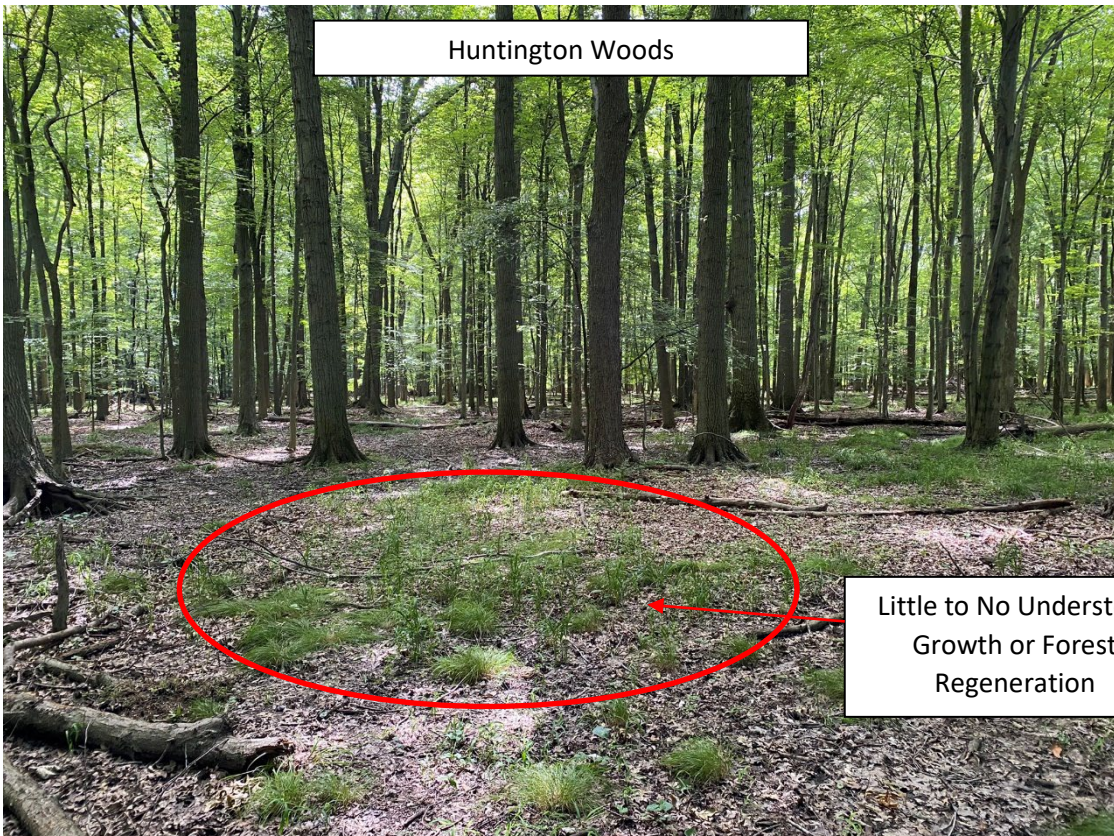






Sebring Woods

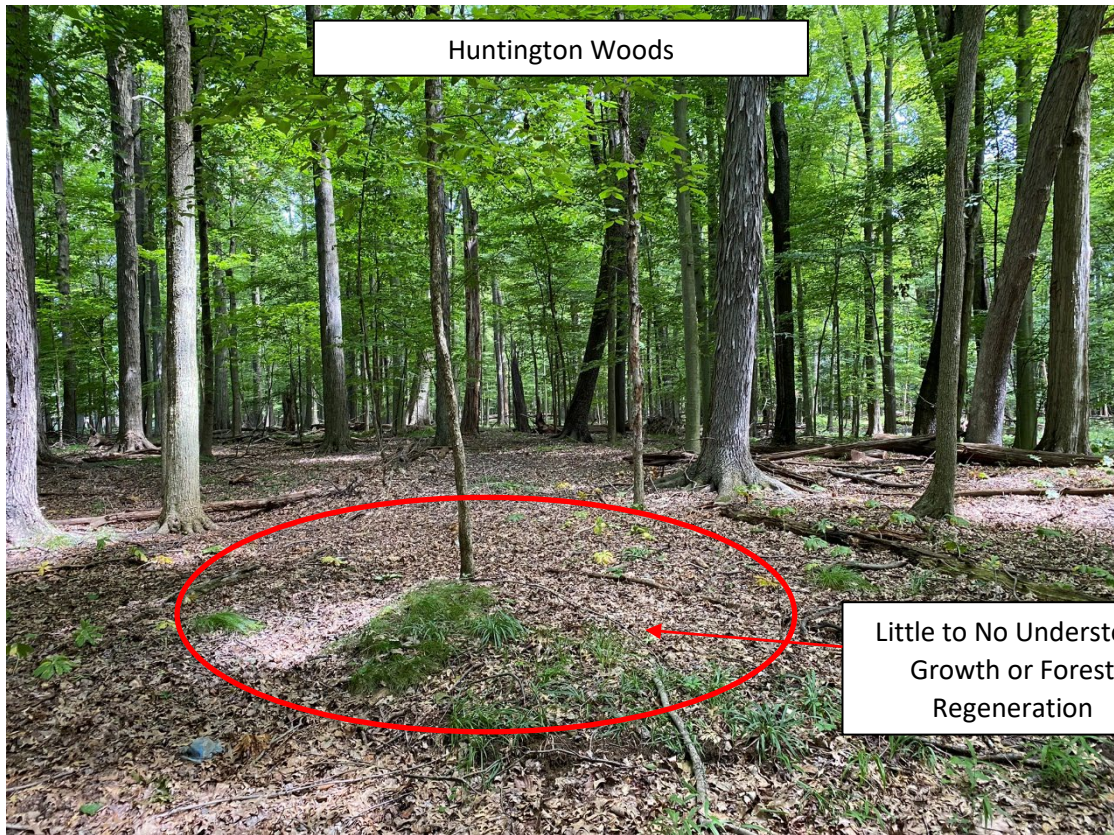
Little to No Understory  
Growth or Forest  
Regeneration



Huntington Woods

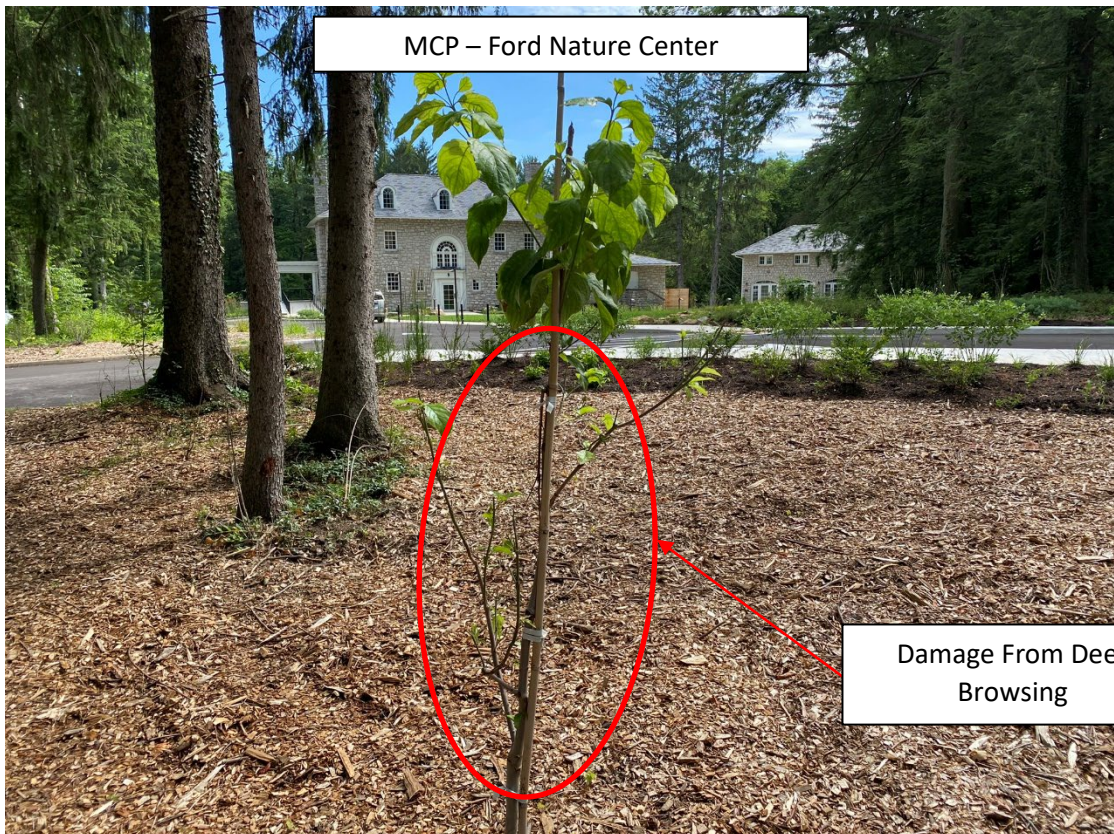
Little to No Understory  
Growth or Forest  
Regeneration





Huntington Woods

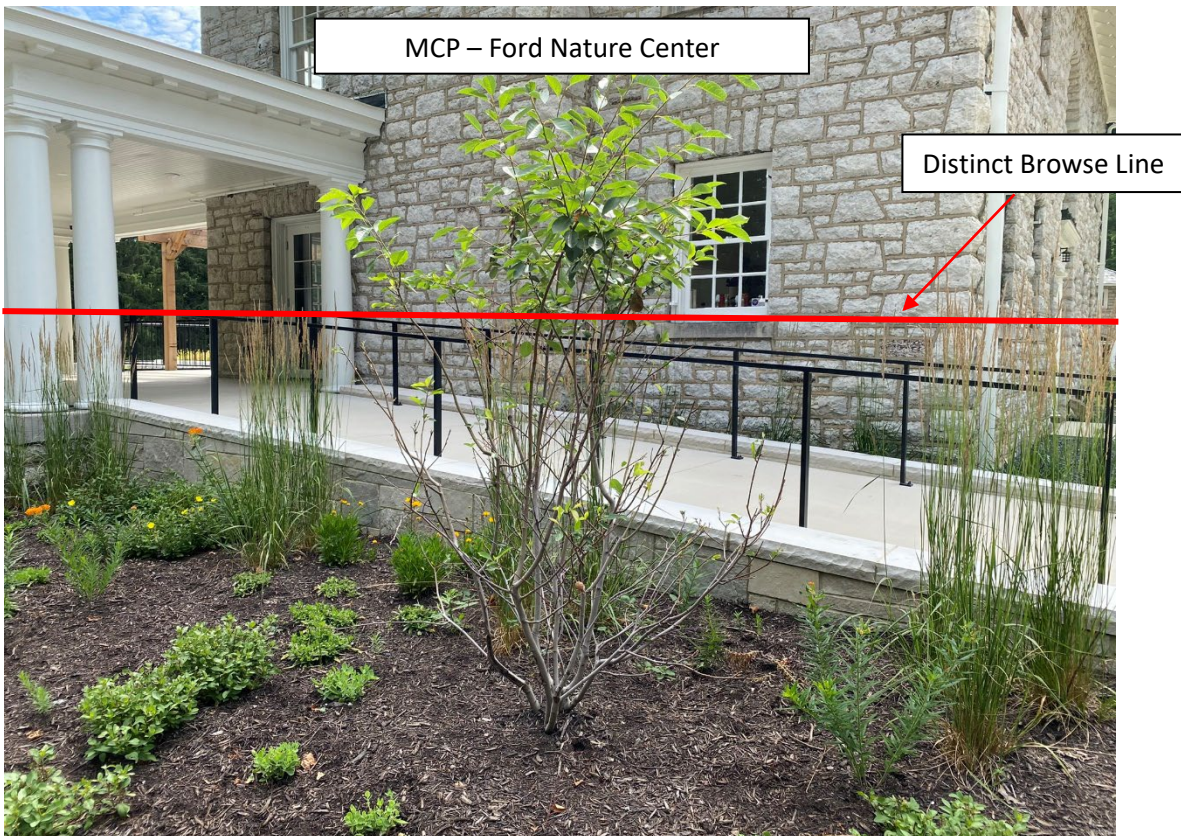
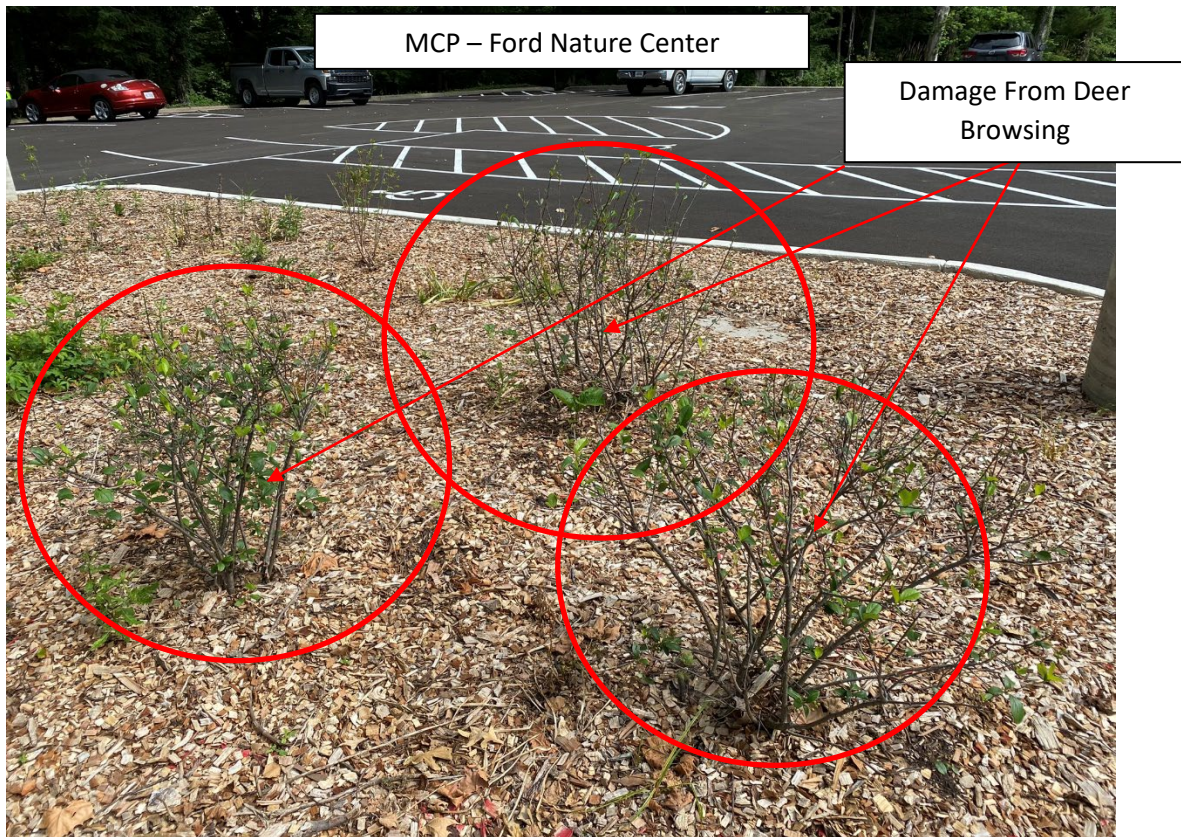
Little to No Understory  
Growth or Forest  
Regeneration



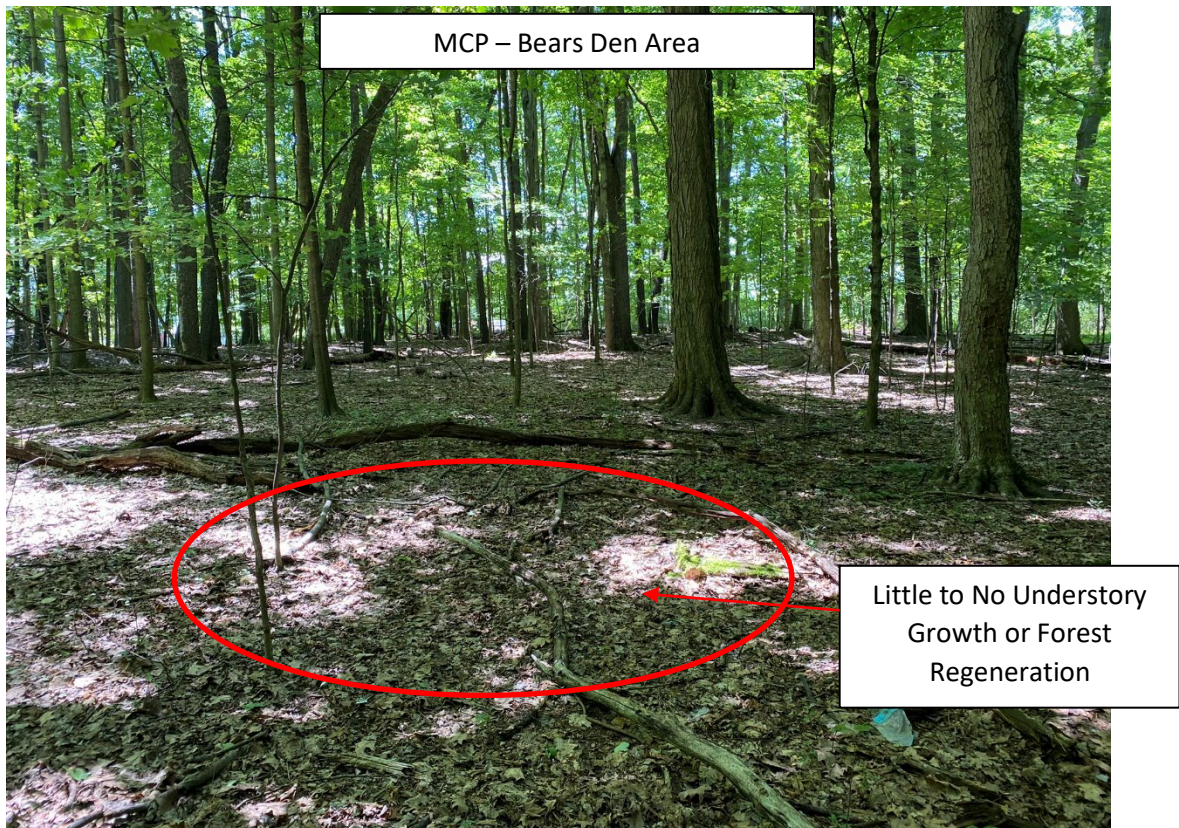
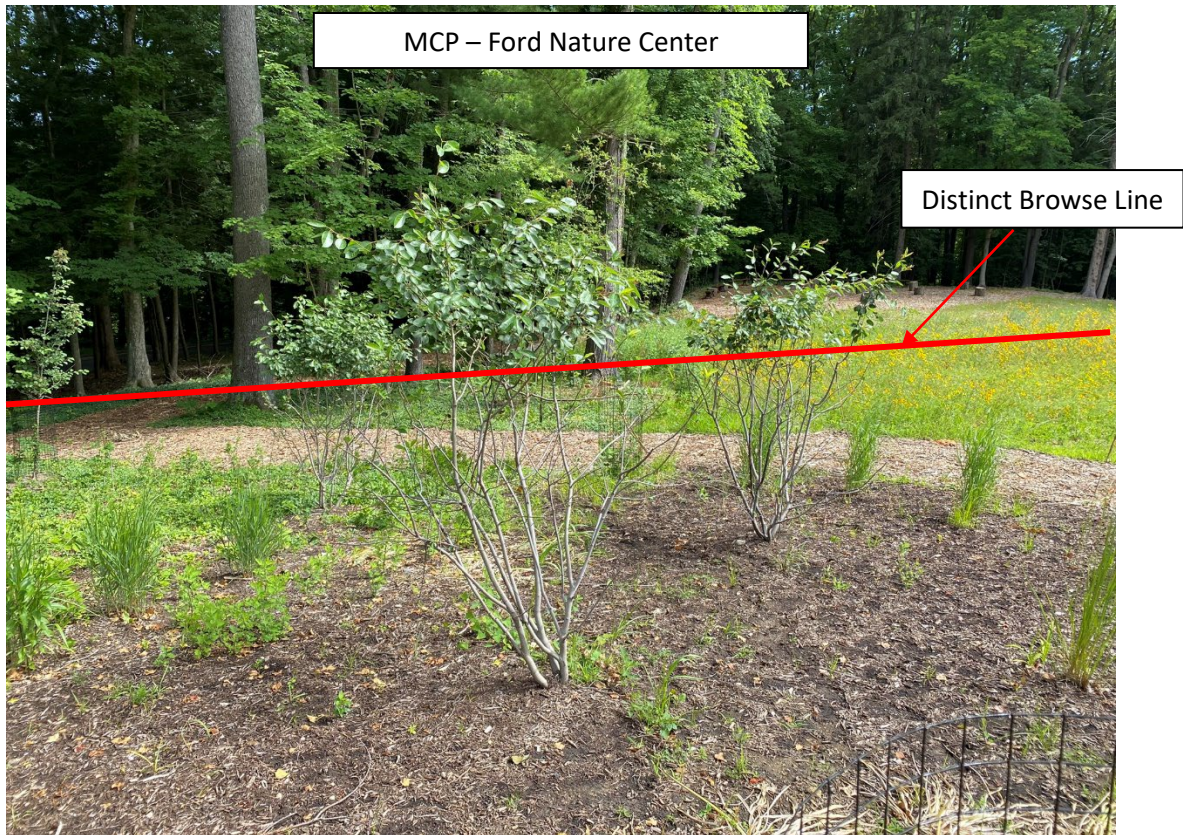
MCP – Ford Nature Center

Damage From Deer  
Browsing

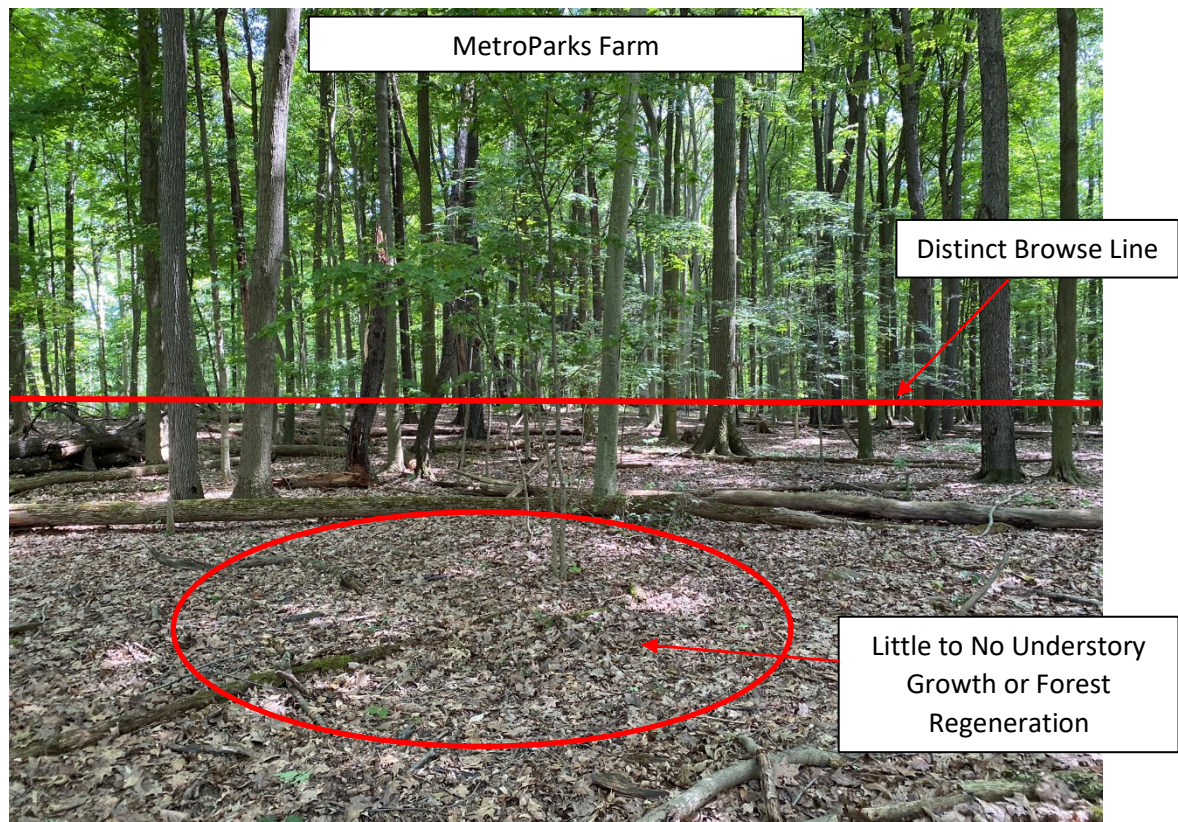
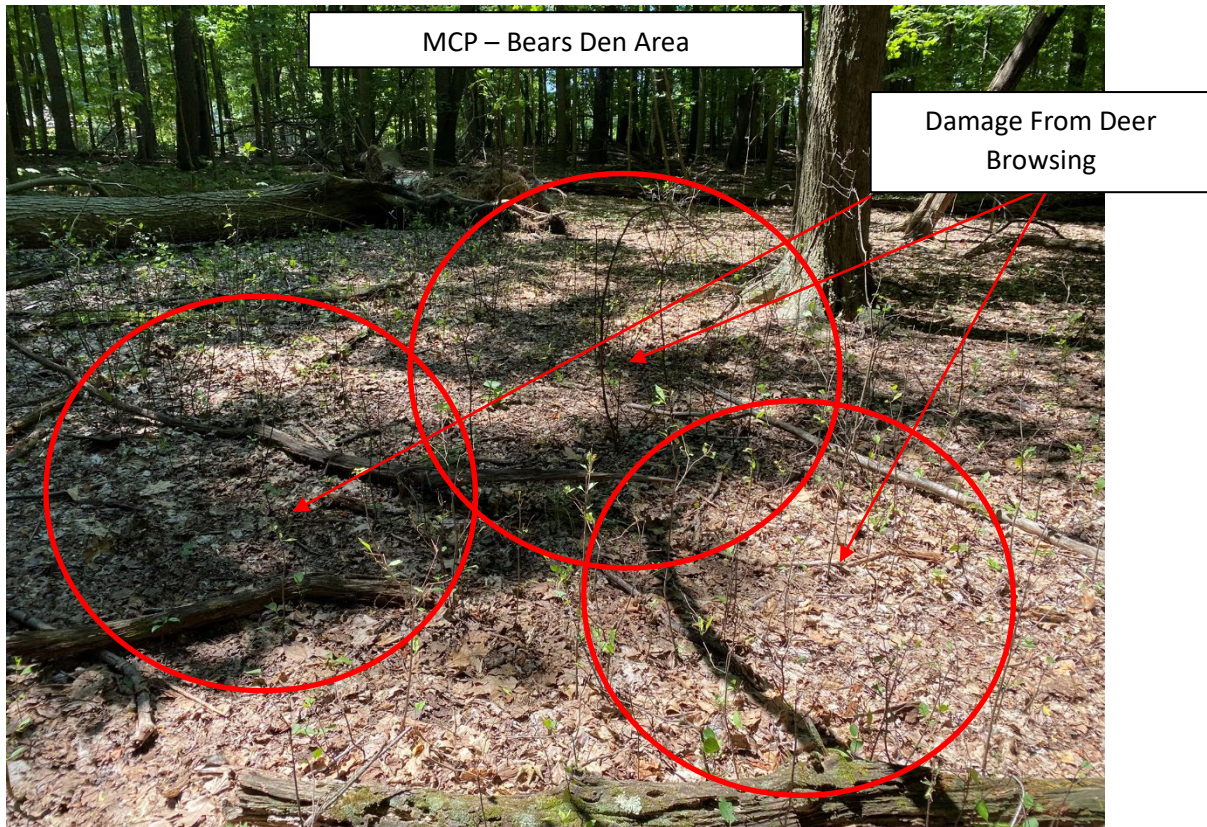




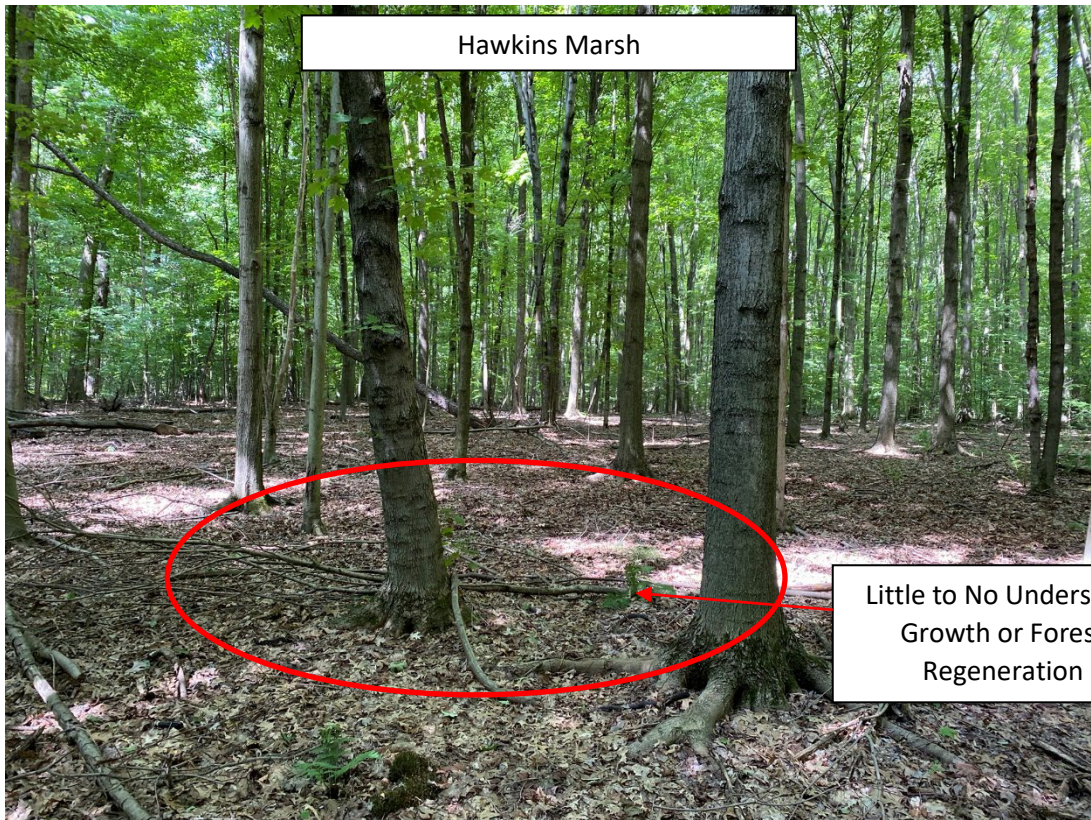






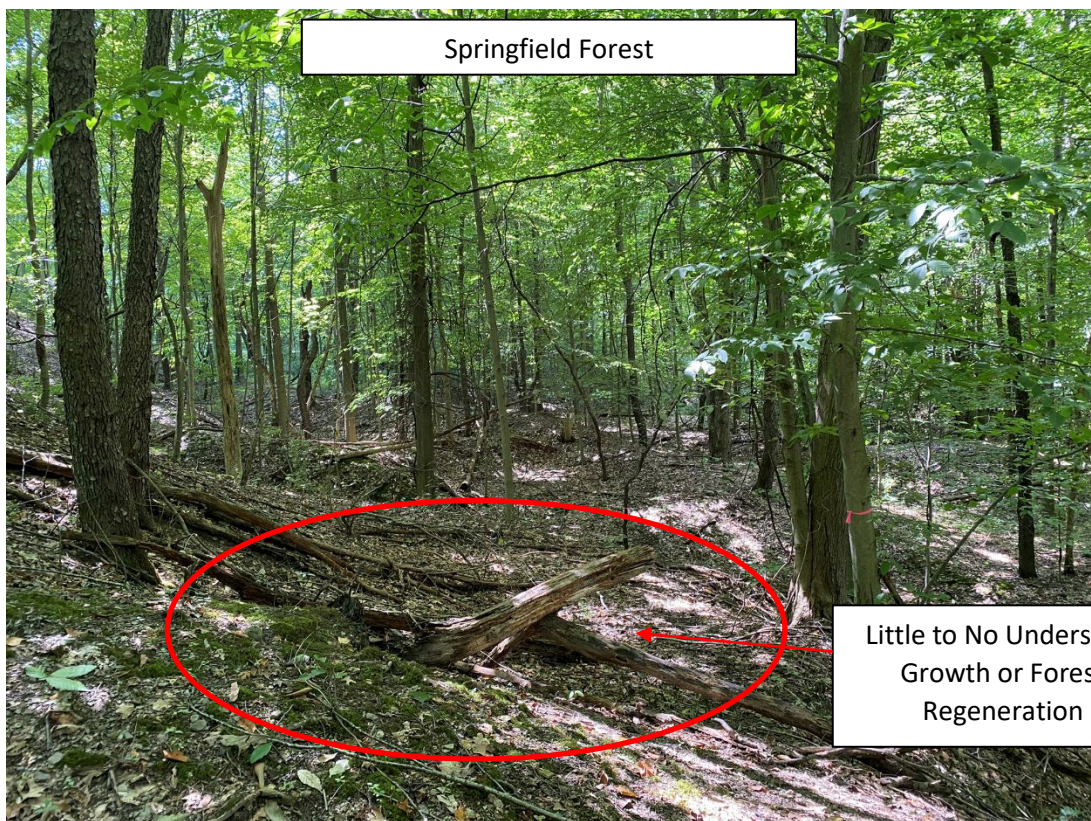






Hawkins Marsh

Little to No Understory  
Growth or Forest  
Regeneration



Springfield Forest

Little to No Understory  
Growth or Forest  
Regeneration



