

# AERIAL INFRARED SURVEY: RESULTS FOR ALL PARKS

				THERMAL SIGNATURES OBSERVED WITHIN PARK BOUNDARIES			
	PARK	PARK SIZE (ACRES)	PARK SIZE (SQ MILES)	COUNT	ACRES PER DEER	DEER PER ACRE	DEER PER SQ MILE
CENTRAL	MILL CREEK PARK	1,626	2.54	903	1.80	0.56	355
	HITCHCOCK WOODS	689	1.08	429	1.61	0.62	398
	HUNTINGTON WOODS	383	0.60	354	1.08	0.92	592
	MILL CREEK WILDLIFE SANCTUARY	482	0.75	267	1.81	0.55	355
	COLLIER PRESERVE	303	0.47	124	2.44	0.41	262
EAST	McGUFFY WILDLIFE PRESERVE	78	0.12	48	1.63	0.62	394
	YELLOW CREEK PARK	76	0.12	80	0.95	1.05	674
	SPRINGFIELD FOREST	89	0.14	69	1.29	0.78	496
	CRANBERRY RUN HEADWATERS	27	0.04	19	1.42	0.70	450
WEST	VICKERS NATURE PRESERVE	262	0.41	116	2.26	0.44	283
	SEBRING WOODS	39	0.06	37	1.05	0.95	607
	EGYPT SWAMP PRESERVE	75	0.12	54	1.39	0.72	461
	SAWMILL CREEK PRESERVE	167	0.26	141	1.18	0.84	540
	METROPARKS FARM	402	0.63	197	2.04	0.49	314
	HAWKINS MARSH	161	0.25	97	1.66	0.60	386
TOTALS AND AVERAGES:		4,859	7.59	2,935	1.66	0.60	387

RECOMMENDED POPULATION DENSITIES ARE 10-20 DEER/Mi<sup>2</sup>  
TO REMAIN BELOW ECOLOGICAL CARRYING CAPACITY.

**OUR RESULTS AVERAGE 387 DEER/Mi<sup>2</sup>**



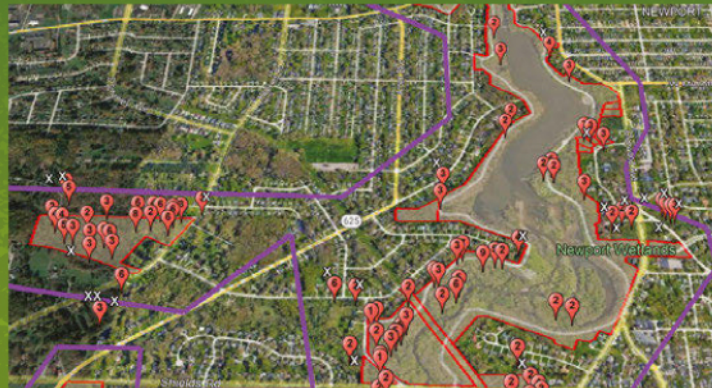
# MILL CREEK PARK

1626 ACRES SURVEYED (2.54 MI<sup>2</sup>) | 903 DEER DETECTED\* | 355 DEER/MI<sup>2</sup> (MCP TOTALS)

## NORTH OF ROUTE 62



## SHIELDS ROAD TO ROUTE 62



## ROUTE 224 TO SHIELDS ROAD



- EACH PIN REPRESENTS A HEAT SIGNATURE CONSISTENT WITH THAT OF A DEER WITH A CONFIDENCE INTERVAL  $\geq 85\%$
- THE NUMBER INSIDE EACH PIN INDICATES THE NUMBER OF HEAT SIGNATURES PRESENT
- PINS MARKED WITH "X" FALL OUTSIDE MCMP BOUNDARIES BUT WITHIN THE ~400' BUFFER AREA
- PINS MARKED WITH "XX" FALL OUTSIDE OF THE BUFFER AREA

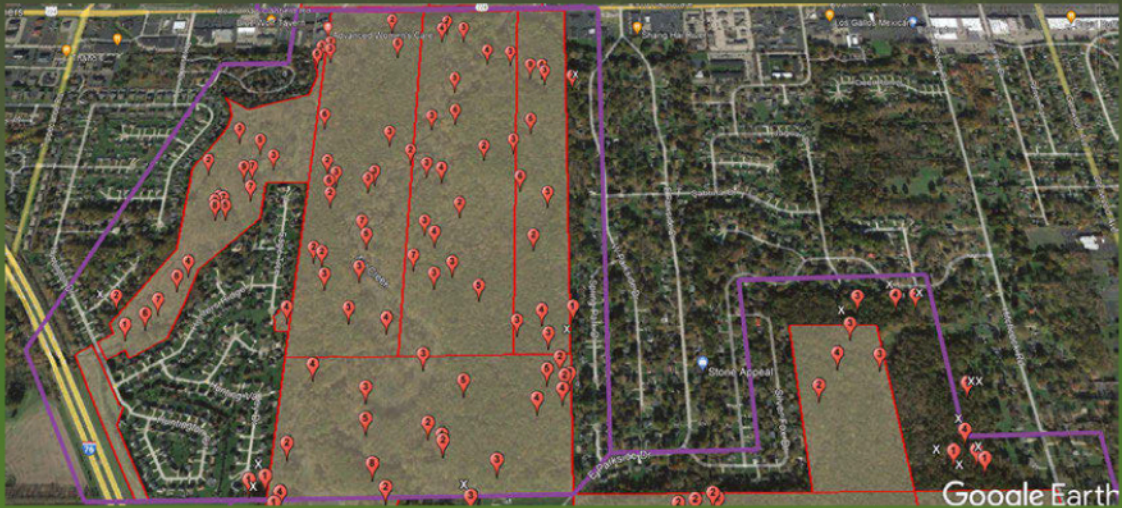
\*DEER/MI<sup>2</sup> FIGURES BASED UPON HEAT SIGNATURES OBSERVED WITHIN METROPARKS BOUNDARIES.





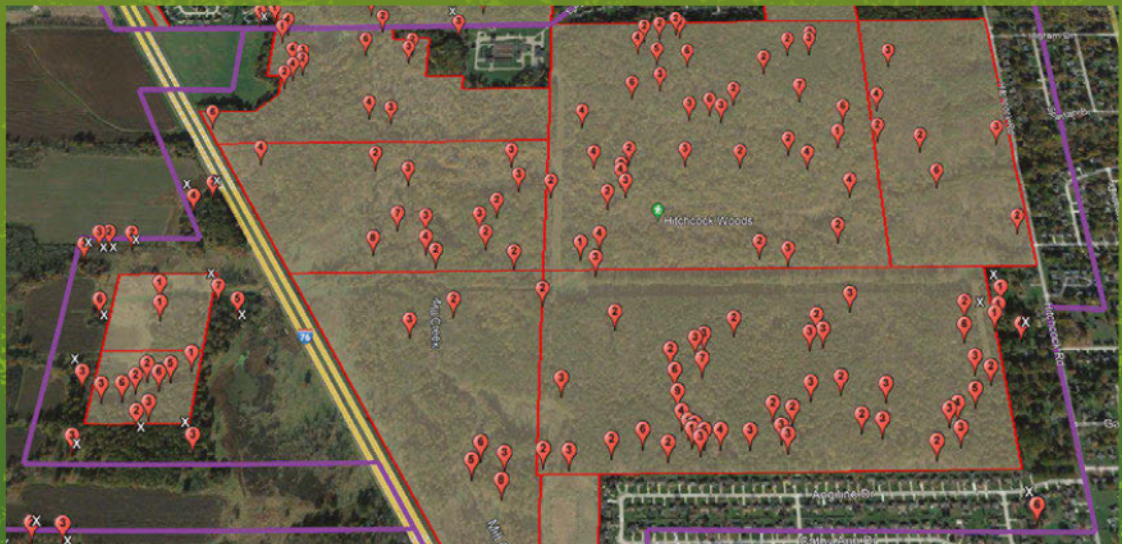
## HUNTINGTON WOODS

383 ACRES SURVEYED (0.60 MI<sup>2</sup>) | 354 DEER DETECTED\* | 592 DEER/MI<sup>2</sup>



## HITCHCOCK WOODS

689 ACRES SURVEYED (1.06 MI<sup>2</sup>) | 429 DEER DETECTED\* | 398 DEER/MI<sup>2</sup>



- EACH PIN REPRESENTS A HEAT SIGNATURE CONSISTENT WITH THAT OF A DEER WITH A CONFIDENCE INTERVAL  $\geq 85\%$
- THE NUMBER INSIDE EACH PIN INDICATES THE NUMBER OF HEAT SIGNATURES PRESENT
- PINS MARKED WITH "X" FALL OUTSIDE MCMP BOUNDARIES BUT WITHIN THE ~400' BUFFER AREA
- PINS MARKED WITH "XX" FALL OUTSIDE OF THE BUFFER AREA

\*DEER/MI<sup>2</sup> FIGURES BASED UPON HEAT SIGNATURES OBSERVED WITHIN METROPARKS BOUNDARIES.



## ► COLLIER PRESERVE

303 ACRES SURVEYED (0.47 MI<sup>2</sup>) | 124 DEER DETECTED\* | 262 DEER/MI<sup>2</sup>



## ► MILL CREEK WILDLIFE SANCTUARY

482 ACRES SURVEYED (0.75 MI<sup>2</sup>) | 267 DEER DETECTED\* | 355 DEER/MI<sup>2</sup>



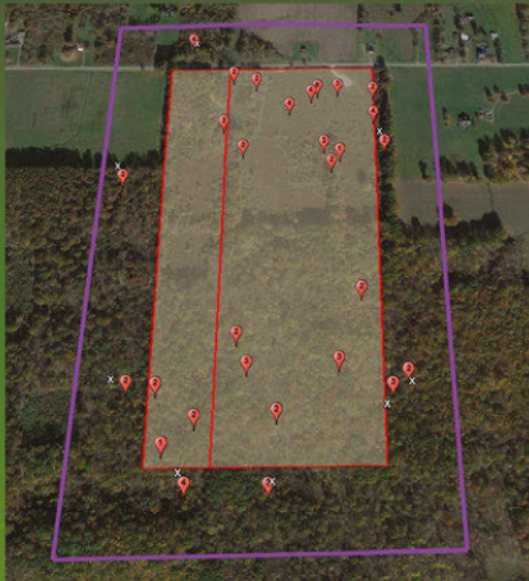
- EACH PIN REPRESENTS A HEAT SIGNATURE CONSISTENT WITH THAT OF A DEER WITH A CONFIDENCE INTERVAL  $\geq 85\%$
- THE NUMBER INSIDE EACH PIN INDICATES THE NUMBER OF HEAT SIGNATURES PRESENT
- PINS MARKED WITH "X" FALL OUTSIDE MCMP BOUNDARIES BUT WITHIN THE ~400' BUFFER AREA
- PINS MARKED WITH "XX" FALL OUTSIDE OF THE BUFFER AREA

\*DEER/MI<sup>2</sup> FIGURES BASED UPON HEAT SIGNATURES OBSERVED WITHIN METROPARKS BOUNDARIES.



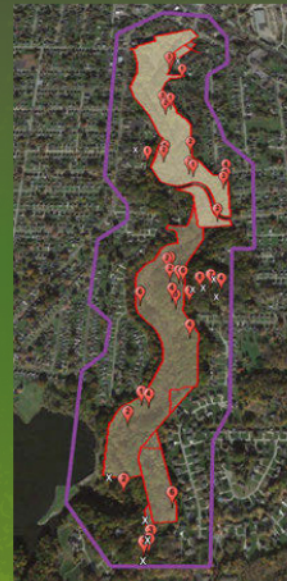
## ► MCGUFFY WILDLIFE PRESERVE

78 ACRES SURVEYED (0.12 MI<sup>2</sup>)  
48 DEER DETECTED\* | 394 DEER/MI<sup>2</sup>



## ► YELLOW CREEK PARK

76 ACRES SURVEYED (0.12 MI<sup>2</sup>)  
80 DEER DETECTED\* | 674 DEER/MI<sup>2</sup>



## ► SPRINGFIELD FOREST

89 ACRES SURVEYED (0.14 MI<sup>2</sup>) | 69 DEER DETECTED\* | 496 DEER/MI<sup>2</sup>



- EACH PIN REPRESENTS A HEAT SIGNATURE CONSISTENT WITH THAT OF A DEER WITH A CONFIDENCE INTERVAL  $\geq 85\%$
- THE NUMBER INSIDE EACH PIN INDICATES THE NUMBER OF HEAT SIGNATURES PRESENT
- PINS MARKED WITH "X" FALL OUTSIDE MCMP BOUNDARIES BUT WITHIN THE ~400' BUFFER AREA
- PINS MARKED WITH "XX" FALL OUTSIDE OF THE BUFFER AREA

\*DEER/MI<sup>2</sup> FIGURES BASED UPON HEAT SIGNATURES OBSERVED WITHIN METROPARKS BOUNDARIES.



## HAWKINS MARSH

161 ACRES SURVEYED (0.25 MI<sup>2</sup>)  
97 DEER DETECTED\* | 386 DEER/MI<sup>2</sup>



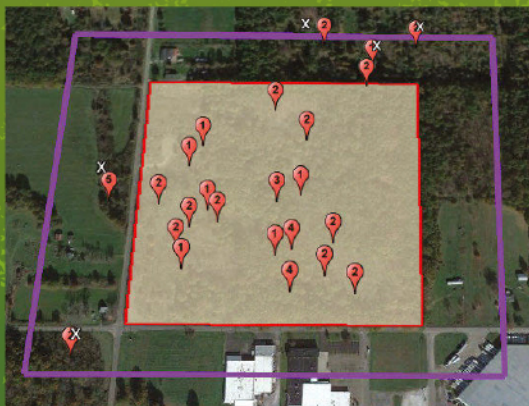
## EGYPT SWAMP PRESERVE

75 ACRES SURVEYED (0.12 MI<sup>2</sup>)  
54 DEER DETECTED\* | 461 DEER/MI<sup>2</sup>



## SEBRING WOODS

39 ACRES SURVEYED (0.06 MI<sup>2</sup>)  
37 DEER DETECTED\* | 607 DEER/MI<sup>2</sup>



- EACH PIN REPRESENTS A HEAT SIGNATURE CONSISTENT WITH THAT OF A DEER WITH A CONFIDENCE INTERVAL  $\geq 85\%$
- THE NUMBER INSIDE EACH PIN INDICATES THE NUMBER OF HEAT SIGNATURES PRESENT
- PINS MARKED WITH "X" FALL OUTSIDE MCMP BOUNDARIES BUT WITHIN THE ~400' BUFFER AREA
- PINS MARKED WITH "XX" FALL OUTSIDE OF THE BUFFER AREA

\*DEER/MI<sup>2</sup> FIGURES BASED UPON HEAT SIGNATURES OBSERVED WITHIN METROPARKS BOUNDARIES.



## ▶ SAWMILL CREEK PRESERVE

167 ACRES SURVEYED (0.25 MI<sup>2</sup>) | 97 DEER DETECTED\* | 386 DEER/MI<sup>2</sup>



## ▶ METROPARKS FARM

402 ACRES SURVEYED (0.63 MI<sup>2</sup>)  
197 DEER DETECTED\* | 314 DEER/MI<sup>2</sup>



## ▶ VICKERS NATURE PRESERVE

262 ACRES SURVEYED (0.41 MI<sup>2</sup>)  
1166 DEER DETECTED\* | 283 DEER/MI<sup>2</sup>



- EACH PIN REPRESENTS A HEAT SIGNATURE CONSISTENT WITH THAT OF A DEER WITH A CONFIDENCE INTERVAL  $\geq 85\%$
- THE NUMBER INSIDE EACH PIN INDICATES THE NUMBER OF HEAT SIGNATURES PRESENT
- PINS MARKED WITH "X" FALL OUTSIDE MCMP BOUNDARIES BUT WITHIN THE ~400' BUFFER AREA
- PINS MARKED WITH "XX" FALL OUTSIDE OF THE BUFFER AREA

\*DEER/MI<sup>2</sup> FIGURES BASED UPON HEAT SIGNATURES OBSERVED WITHIN METROPARKS BOUNDARIES.