



Originally constructed in the 1860s as the Niles & Lisbon Branch of the Erie Lackawanna Railroad Company, the rail line served as an important link between Cleveland and Pittsburgh. In its heyday, the track bustled with passenger trains and freight trains hauling coal, steel, iron ore, produce, and dry goods. Each community along the line boasted its own passenger depot, freight house, and telegraph office.

Canfield Fair depended on the line as transportation to the fair. Improvements to the highway system resulted in the demise of rail lines all across the country. By the late 1930s, the passenger service was discontinued on the Niles & Lisbon Branch. Subsequent bankruptcies resulted in its eventual closing. The tracks and ties were removed in 1989.

FROM Rail TO Trail

RAILWAY HISTORY

The MetroParks Bikeway is the Mahoning County section of the 110-mile Great Ohio Lake to River Greenway, a developing corridor that, when completed, will allow trail users to travel from Lake Erie to the Ohio River.

The MetroParks Bikeway opened in 2000. This 11-mile paved trail offers a variety of scenery and experiences for hikers, skaters, and bicyclists. The trail has been warmly embraced by the community and used by the young and the young at heart.

The conversion of the rail line to a biking and hiking trail was recommended in the 1990 General Plan for Mill Creek MetroParks. The establishment of the trail could once again connect the communities as the rail line had previously done. The MetroParks, working with Eastgate Regional Council of Governments, was able to secure Federal Highway Administration and Ohio Department of Transportation funding to acquire and construct the trail.



Mill Creek MetroParks
7574 Columbiana-Canfield Rd.
Canfield, OH 44406
330.702.3000

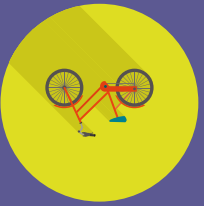
For Bikeway assistance, contact the
MetroParks Police at 330.740.7102



millcreekmetroparks.org



MILL CREEK METROPARKS
**MetroParks
Bikeway**



Enjoy THE Ride



Along the Way...

Leave your car behind and experience a wide variety of scenery as you reconnect with nature, the community's history, and each other. Enjoy the MetroParks Bikeway!

Mahoning Avenue Trailhead

The Mahoning Avenue Overpass was designed to resemble a historic railway trestle and mimics the architectural features found along the former Niles & Lisbon Branch of the Erie Lackawana Railroad Company. Funded in full through the Federal Highway Administration, the overpass provides bikeway users safe crossing over Mahoning Avenue. Parking lot located on Harold St.

Kirk Road Trailhead

This award-winning trailhead provides a fifty-car parking lot, restrooms, water fountains, a picnic pavilion, and a location for educational and trailside activities. Funds to develop the depot-themed facility were provided by Eastgate Regional Council of Governments, Federal Highway Administration, and the Ohio Department of Natural Resources.

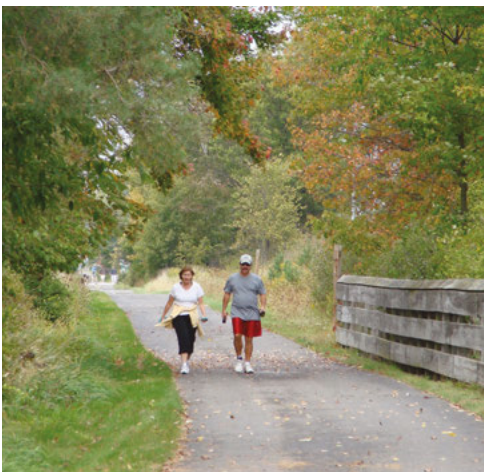
Sawmill Creek Preserve

Acquired through a grant from OEPA, the 154-acre forested preserve serves a critical function in the natural environment. The trees and shrubs filter and trap sediments from entering Sawmill Creek, a tributary to Meander Reservoir—the major source of drinking water for 300,000 residents. This forested stream ecosystem also provides a habitat for diverse species of wild and aquatic life.

MetroParks Farm Trailhead

Located on Route 46 across from the Canfield Fairgrounds, the MetroParks Farm is a 405-acre educational, working farm. Classrooms, agricultural exhibits and displays, and an animal barn are part of the facility. McMahon Hall, a multipurpose hall, is available for year-round rental. Mill Creek MetroParks' Administrative Office is open at this location from 8 a.m.–4:30 p.m., Monday–Friday.

The trailhead at MetroParks Farm provides parking, water, restrooms, and access to the phenology garden, children's natural playground, and the Mindy Henning Memorial Trail, an approximately 2 mile hiking trail.



Whether on foot or on a bicycle, you'll enjoy the scenery along the way.

Trail Etiquette & Safety Tips

- All motorized vehicles, except those used to assist disabled persons, are prohibited.
- Please be courteous to other trail users. When in a group, do not block the trail.
- Stop at all intersections and use caution when crossing roadways.
- Pets must be on a leash at all times. Please clean up after your pet.
- Stay to the right unless passing. Please let others know when you are passing.
- Please do not litter. Help keep our bikeway beautiful.
- Do not trespass. Private property borders the trail.
- Bicyclists must yield to all other trail users.
- Stay safe and please wear a helmet when biking or skating.



A pathway to family fun for all ages!

Bikeway Hours

5 am – 10 pm

MetroParks Police

330.740.7102

The MetroParks Bikeway is regularly patrolled by the MetroParks Police and Bikeway volunteers.

Please contact the MetroParks Police if you are interested in the volunteer Bikeway Program.

Map Legend

- Bikeway
- Bike rentals
- Restrooms
- Parking
- Drinking water
- MetroParks property
- Mileage between intersections



Elevation Information

The grade along the MetroParks Bikeway is typically very gentle. The lowest point of the Bikeway is at County Line Road (Trumbull County line). The Bikeway's grade increases to the highest point at Lisbon Street in Canfield for an elevation difference of 180 feet.