

MILL CREEK METROPARKS BIKEWAY



Stephen L. Avery, RLA

Planning & Operations Director, Mill Creek MetroParks

Justin Rogers, RLA

Planning Manager, Mill Creek MetroParks



April 11, 2016

Mill Creek MetroParks Bikeway

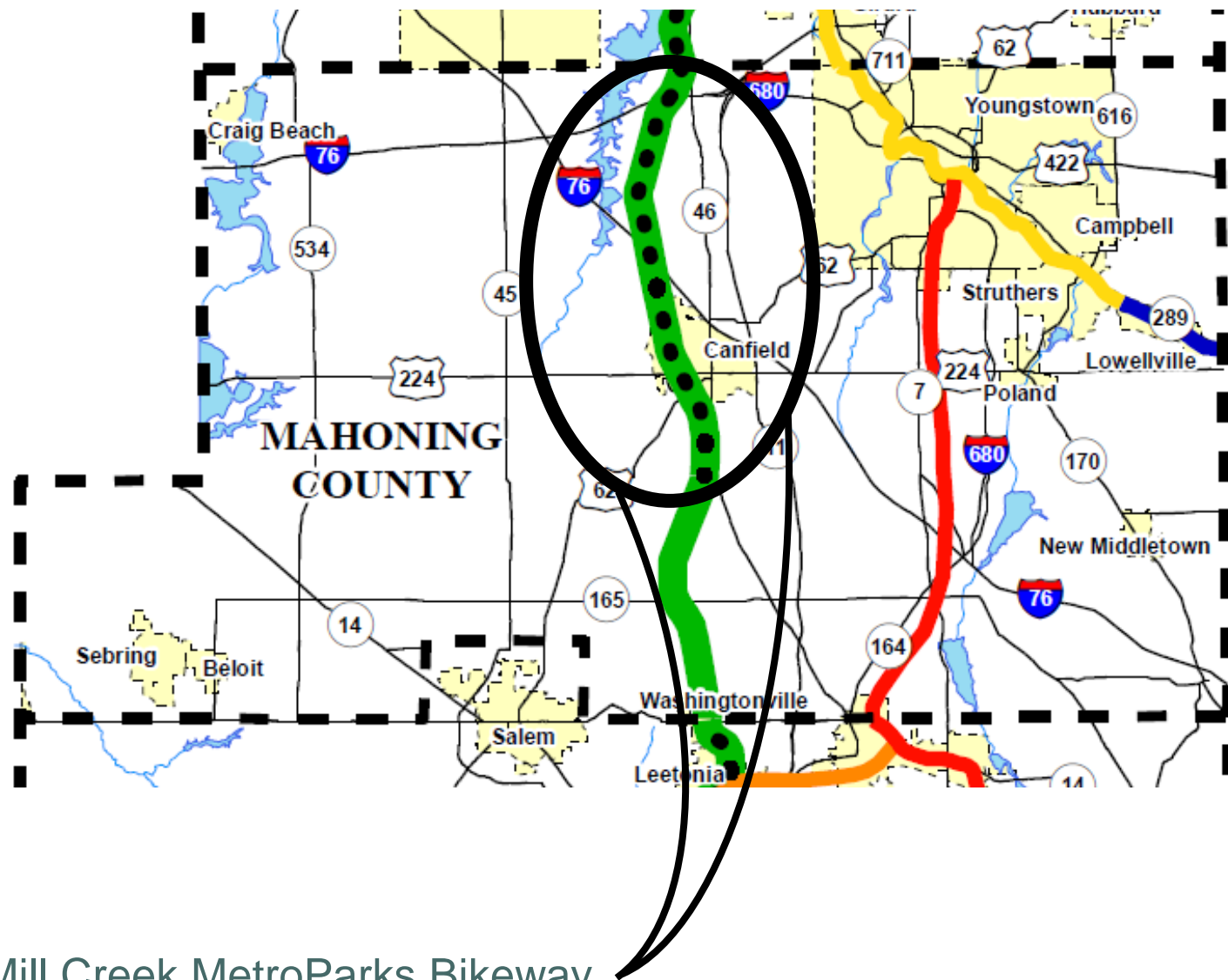
Mission Statement of Mill Creek MetroParks

“To provide park, recreation, and open space facilities of regional significance.”

The MetroParks Bikeway serves as:

- A linear park / greenspace
- A link to history and culture
- A transportation corridor
- An economic generator
- A physical link to communities, neighborhoods, and points of interest
- An opportunity for active recreation and improved health and wellness





MILL CREEK METROPARKS BIKEWAY

Map

MAHONING
County

Mill Creek MetroParks Bikeway



Mill Creek MetroParks Bikeway

General Facts & History of the MetroParks Bikeway

- Corridor was originally constructed in the 1860s as the Niles & Lisbon Branch of the Erie Railroad Company
- With the popularity of the automobile and construction of the highway system, passenger rail and most freight service was discontinued by the 1960s
- After bankruptcies and closing, tracks and ties were removed in the 1980s
- The recommendation to convert the corridor into a “hike & bikeway” was included within the 1990 General Plan for Mill Creek MetroParks.
- The MetroParks worked with Eastgate Regional Council of Governments to secure \$3,755,000 in acquisition and construction funding from the Federal Highway Administration (FHWA) and the Ohio Department of Transportation (ODOT)
- In 2000 and 2001, the 10.6-mile bikeway was constructed and opened to the public



Mill Creek MetroParks Bikeway

General Facts & History of the MetroParks Bikeway

- The existing MetroParks Bikeway traverses through:
Canfield Township, City of Canfield, and Austintown Township
- The Bikeway currently runs from Western Reserve Road to County Line Road (Trumbull County line).
- The trail is a 10'-wide asphalt pavement surface with 2'-wide grassed shoulders on either side
- Allowable uses include bicycling, hiking, rollerblading, and cross-country skiing
- Motorized vehicles (except those used for handicap accessibility) and horseback riding are prohibited

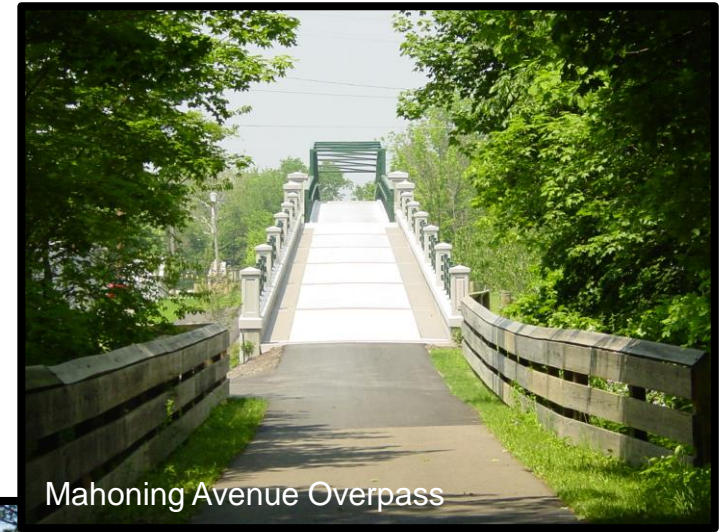
MetroParks Bikeway Map



Mill Creek MetroParks Bikeway

Points of Interest along the MetroParks Bikeway

- Kirk Road Trailhead
- Mahoning Avenue Overpass
- Sawmill Creek Preserve
- MetroParks Farm
- Canfield Fairgrounds
- Tunnel under Interstate 80



Points of Interest



MetroParks Bikeway Map



MILL CREEK METROPARKS BIKEWAY

Map

MAHONING
County



FERA Structure



Restrooms and Upper Parking Lot



WPA Structure and "Depot Structure"

MILL CREEK METROPARKS BIKEWAY

KIRK ROAD Trailhead

Two (2) rehabilitated historic sandstone structures, parking, restrooms, water, "depot structure" with kiosk and benches

Improvements funded by a \$162,000 grant at 100% through FHWA and Eastgate, and a \$187,000 grant at 100% through ODNR

2003 OPRA Awards of Distinction
"Outstanding" Award for Park Area
Development

2005 Heritage Ohio Award "Best Public
Improvement Project" Award



Middle Bridge Span



South Approach Ramp



Planting Beds and Retaining Wall



Three Span Bridge

MILL CREEK METROPARKS BIKEWAY

MAHONING AVE Overpass

Three (3) span bridge over
5-lane Mahoning Avenue in
Austintown Township

\$1,800,000 grant funded at
100% through FHWA

2006 OPRA Awards of
Distinction "Meritorious" Award
for Park Area Development

Move Ohio Awards 2006 Award
Finalist



Regional Bikeways

Conceptual & Planned Bikeway Networks

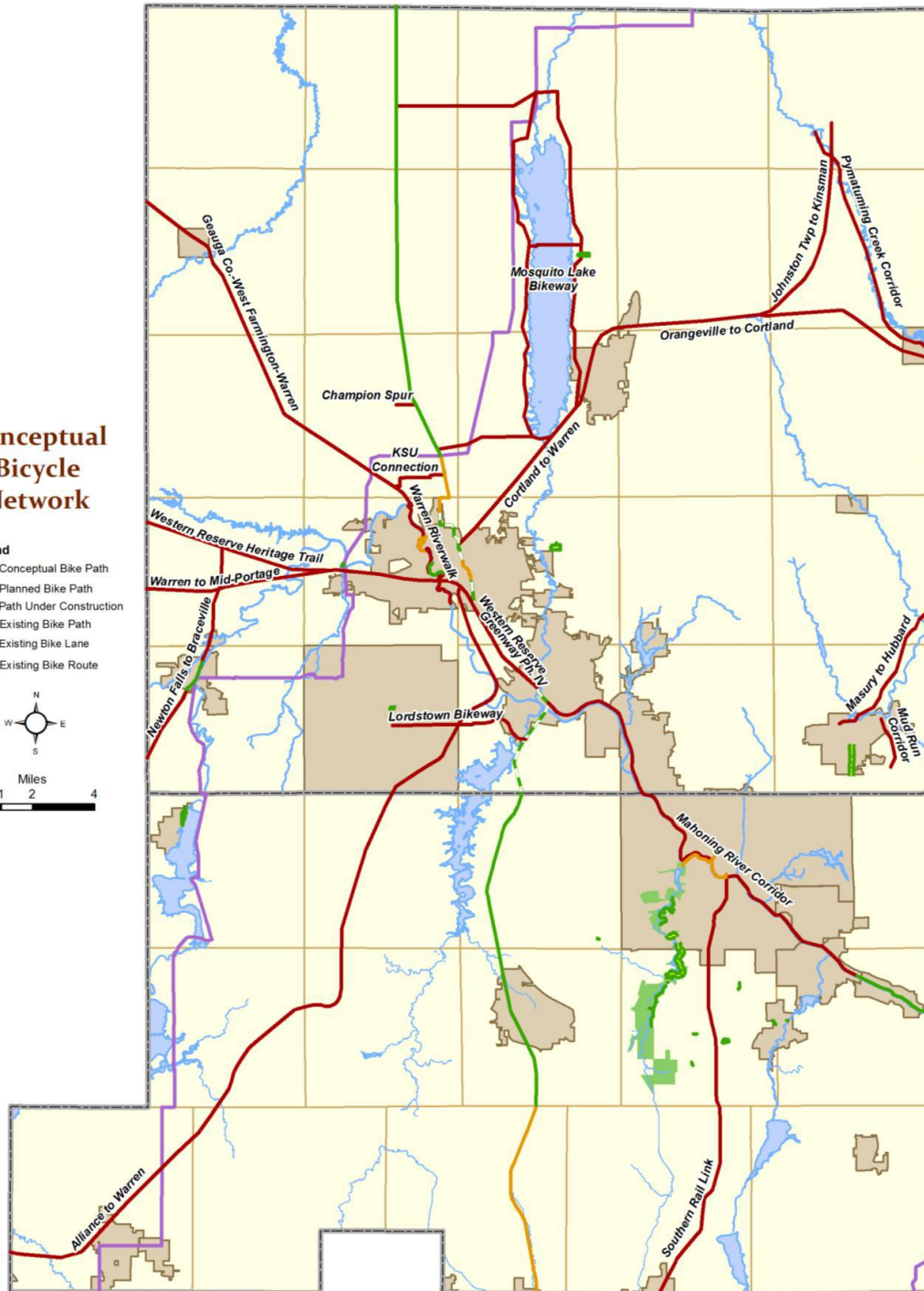
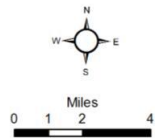
Planning and construction of a series of off-road, multi-use trails for bicycling and other non-motorized recreational activities.

- Regional Counties
- Great Ohio Lake-to-River Greenway
- Industrial Heartland Trails Coalition



Conceptual Bicycle Network

- Legend
- Conceptual Bike Path
 - Planned Bike Path
 - Path Under Construction
 - Existing Bike Path
 - Existing Bike Lane
 - Existing Bike Route



CONCEPTUAL BICYCLE NETWORK

Trumbull
County

Mahoning
County

Regional Counties

Map

EASTGATE
Regional Council
of Governments



GREAT OHIO LAKE-TO-RIVER GREENWAY

Mission Statement: “Our connection to nature, history, and each other...”

“To establish, preserve, and promote a greenway/trail from Lake Erie to the Ohio River for recreation and transportation that will enhance economic development and the quality of life for our region.”

Objectives

- Provide a linear park where children and adults can walk, run, bike, or ski, or ride horseback, surrounded by nature and away from vehicular traffic
- Preserve and provide access to wildlife habitats
- Generate economic growth by bringing new customers to existing businesses, by creating a demand for new products and services, and by increasing property values
- Connect us to our past by illuminating a vital part of this region’s history
- Maintain the integrity of the route for future infrastructure use
- Connect each community to the next, to other places along the Greenway in five (5) counties — Ashtabula, Trumbull, Mahoning, Columbiana, and Beaver — and to a network of similar trails that spans the entire nation.



GREAT OHIO LAKE-TO-RIVER GREENWAY

A “*proposed*” 110-mile bikeway from Lake Erie to the Ohio River.

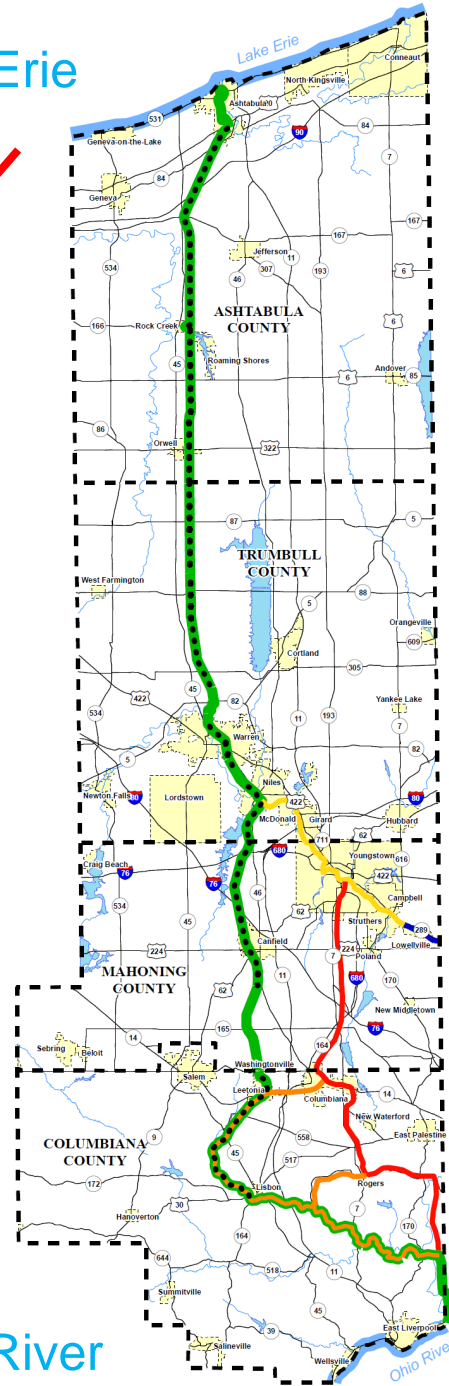
- A comprehensive, regional plan identified this corridor as a potential bikeway facility
- Four (4) Ohio counties (Ashtabula, Trumbull, Mahoning, Columbiana) and one (1) Pennsylvania county (Beaver)
- **Over 75 miles are constructed!**
- One (1) “gap” in each county
- A coalition with each county responsible for planning, constructing, operating and maintaining its section of the GOLRG
- The GOLRG Coalition supports the efforts of individual trail/community efforts
- As of 2013, over \$35 million has been secured for planning and construction of trail and support facilities along the GOLRG



Lake Erie



Ohio River



Ashtabula County

Trumbull County

Mahoning County

Columbiana County

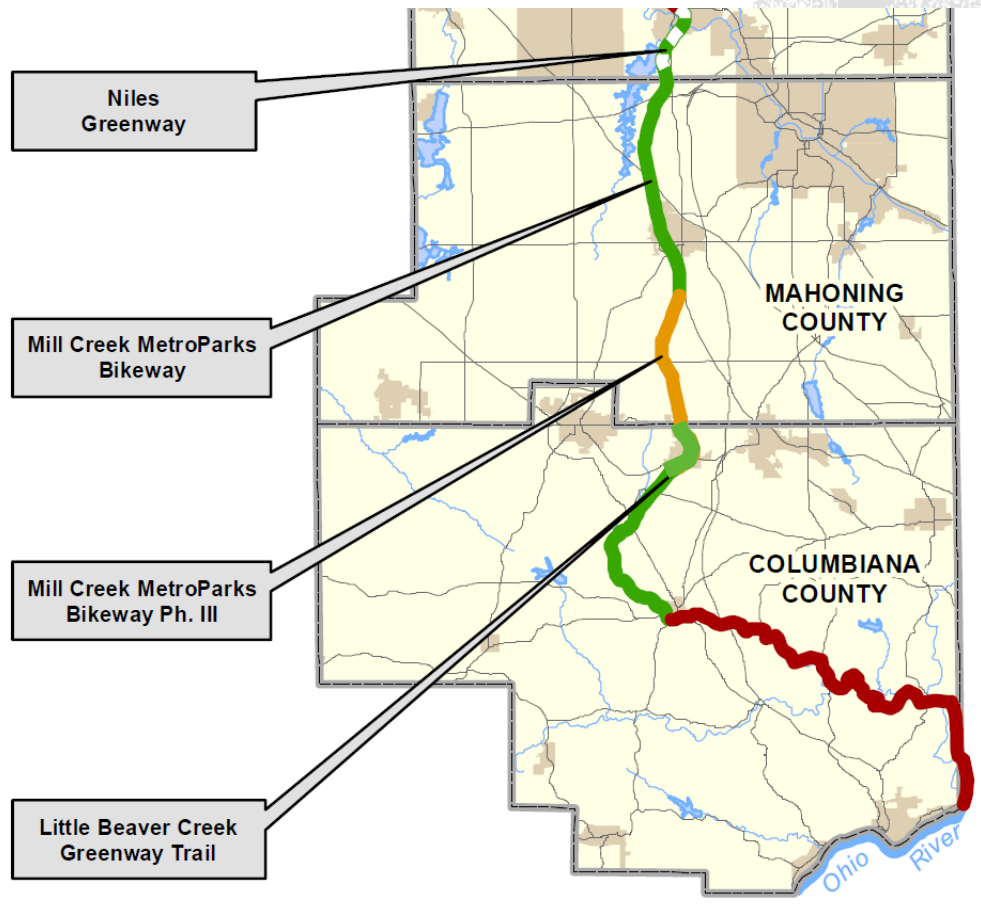
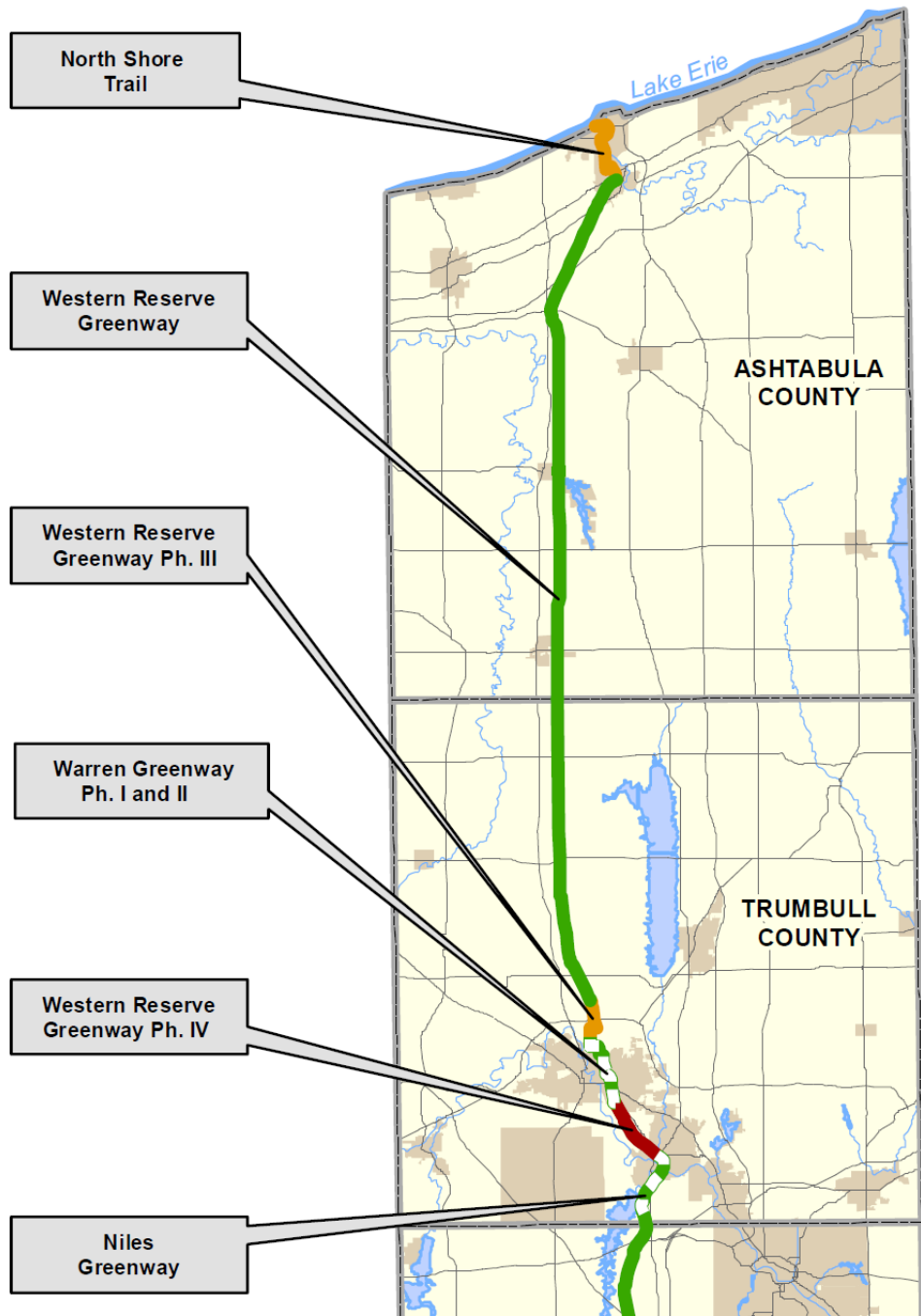
Beaver County

GREAT OHIO LAKE-TO-RIVER GREENWAY

“Our connection to nature, history and each other...”

Mapping





GOLRG
Local Sections &
Trail Names

GREAT OHIO LAKE-TO- RIVER GREENWAY

LOCAL IDENTITY



Coal Mines

Agriculture



Bristolville Station



Blast Furnaces

Niles Railroad Depot

Steel Mills

Rock Creek Depot

Canfield
Fair



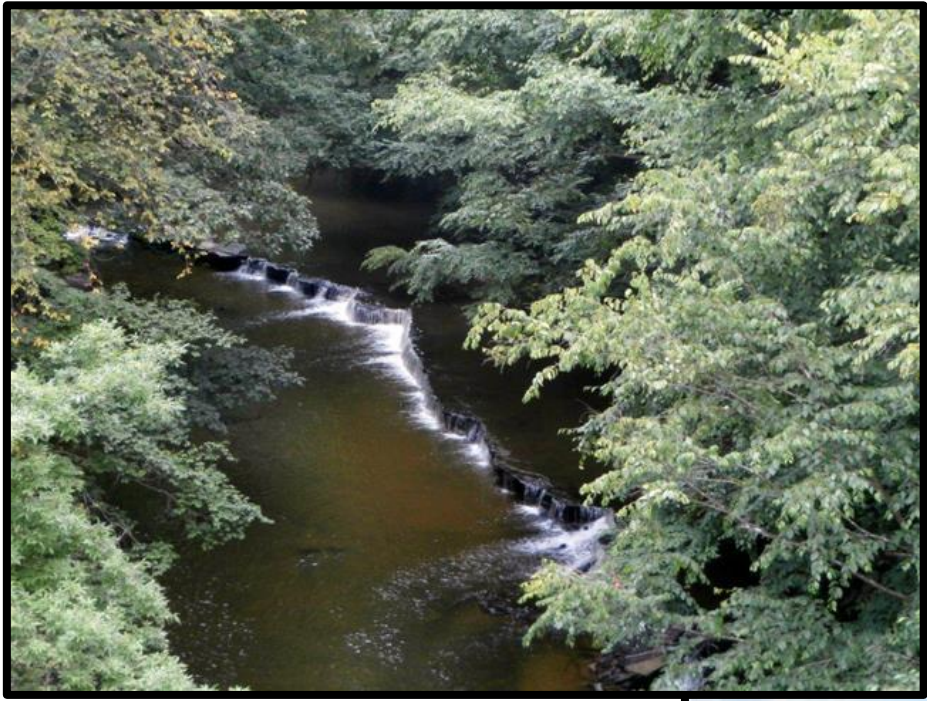
Beehive Coke Ovens, Leetonia

GREAT OHIO LAKE-TO-RIVER GREENWAY

“Our connection to nature, history and each other...”

Industry / Photos HISTORY



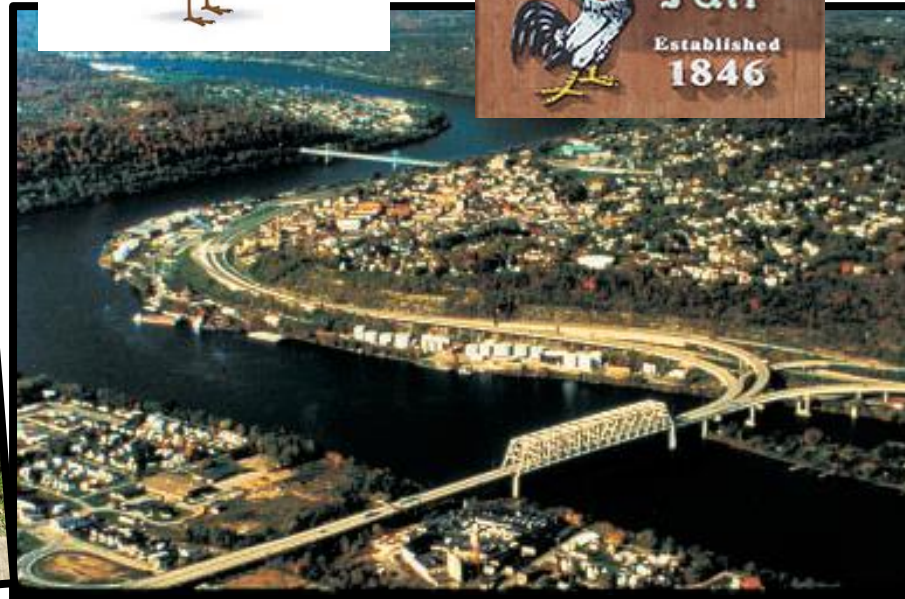
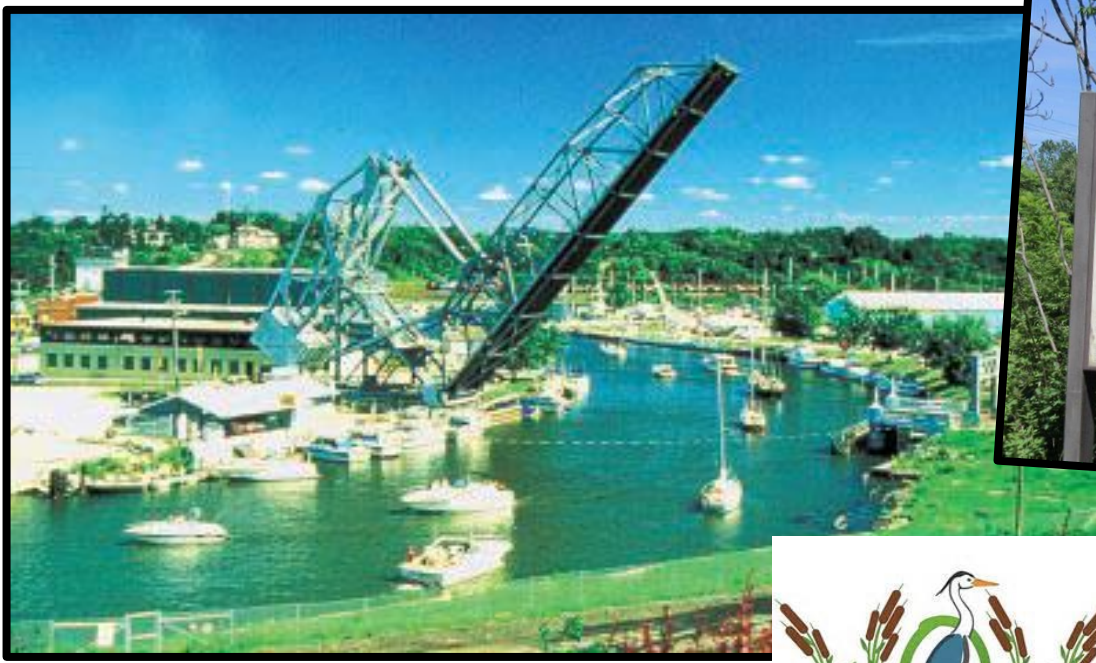


GREAT OHIO LAKE-TO-RIVER GREENWAY

“Our connection to nature, history and each other...”

NATURE





**Mosquito Lake
Greenway Project
Trumbull County, Ohio**



STONE FRUIT



GREAT OHIO LAKE-TO-RIVER GREENWAY

"Our connection to nature, history and each other..."

COMMUNITY CONNECTIONS





GREAT OHIO LAKE-TO-RIVER GREENWAY

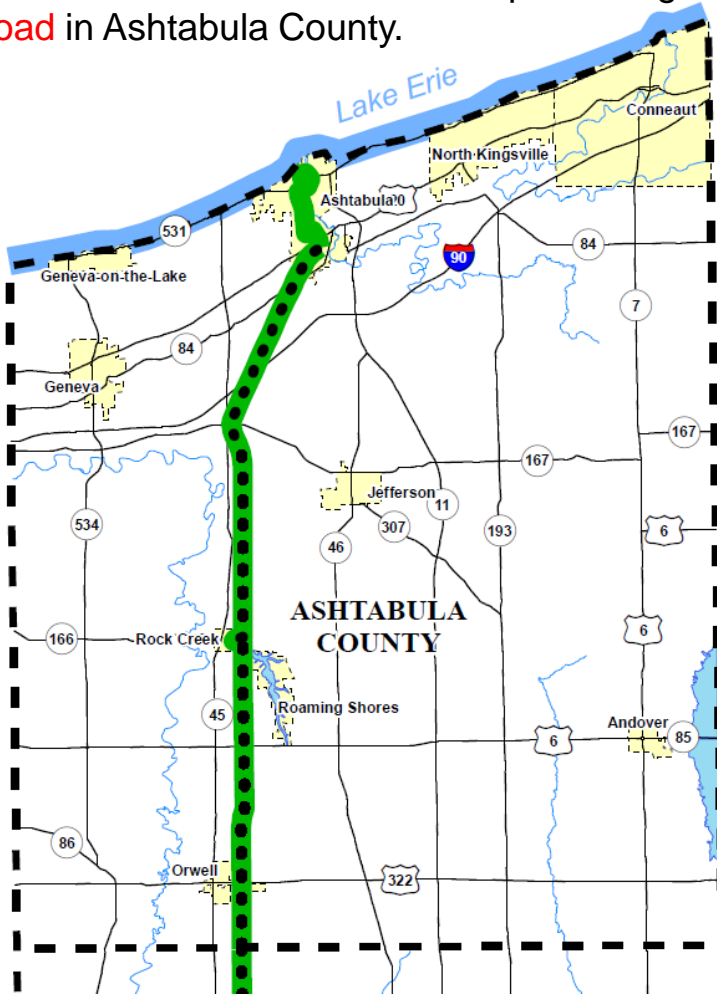
"Our connection to nature, history and each other..."

RECREATION



ASHTABULA COUNTY

The 27-mile long Western Reserve Greenway passes through Ohio's largest county, Ashtabula. The trail features a large former **railroad trestle** in Rock Creek, a 40-acre **trailhead** at Lampson Road in Austinburg, a restored 1897 King Bridge Co. **steel truss bridge** at Clay Street in north Austinburg, and a 100-foot **tunnel** in Ashtabula. Other points of interest include the H.L. **Morrison Station** (park) in Ashtabula and a series of 12 interpretive signs detailing the proud history of the **Underground Railroad** in Ashtabula County.



North Shore Trail Western Reserve Greenway Phases I, II



GREAT OHIO LAKE-TO-RIVER GREENWAY

"Our connection to nature, history and each other..."

ASHTABULA County



GREAT OHIO LAKE-TO-RIVER GREENWAY

“Our connection to nature, history and each other...”

NORTH SHORE TRAIL: THE TURN City of Ashtabula, Ohio



Points of Interest ASHTABULA County





GREAT OHIO LAKE-TO-RIVER GREENWAY

“Our connection to nature, history and each other...”

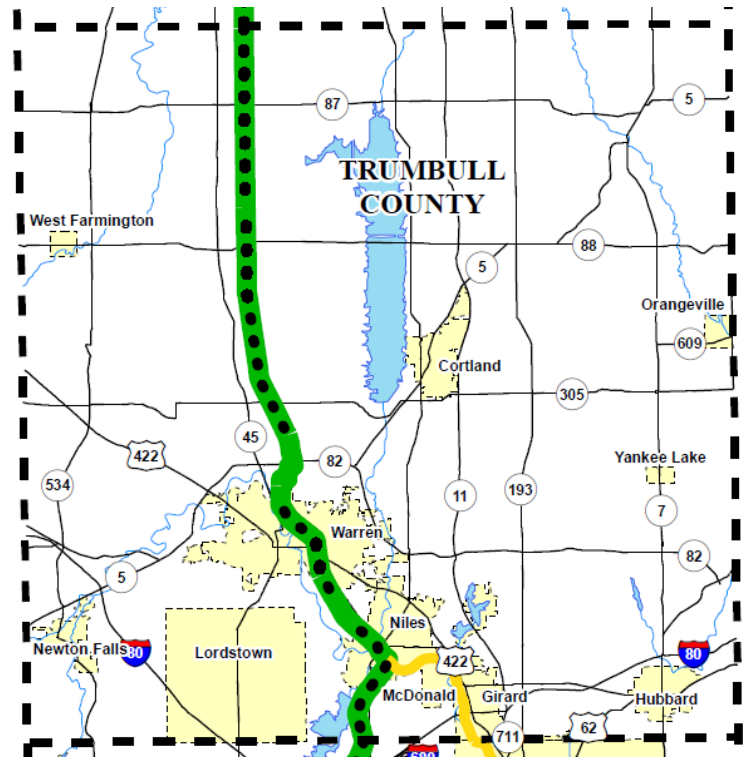
Points of Interest

ASHTABULA County



TRUMBULL COUNTY

The **Western Reserve Greenway**, built upon the former Penn Central 714 rail right-of-way, offers visitors 17 miles of paved trail. With the addition of the **Niles Greenway**, **Warren Bikeway**, and WRG Phase III, over 25 miles of trail are constructed. Through fields, forests, villages and cities, Greenway travelers will experience dramatic scenery changes and close-up views of wildlife throughout Trumbull County. Aside from the sights, the trail is punctuated with **historical locations** with educational signs along the route. The Sunside and Oakfield **trailheads** provide visitors with ample parking, year-round lavatory facilities, information kiosks, outdoor grills, and covered picnic areas.



Western Reserve
Greenway
Phases I, II, III, IV
Warren Bikeway
Niles Greenway



GREAT OHIO LAKE-TO-RIVER GREENWAY

“Our connection to nature, history and each other...”

TRUMBULL County





GREAT OHIO LAKE-TO-RIVER GREENWAY

"Our connection to nature, history and each other..."

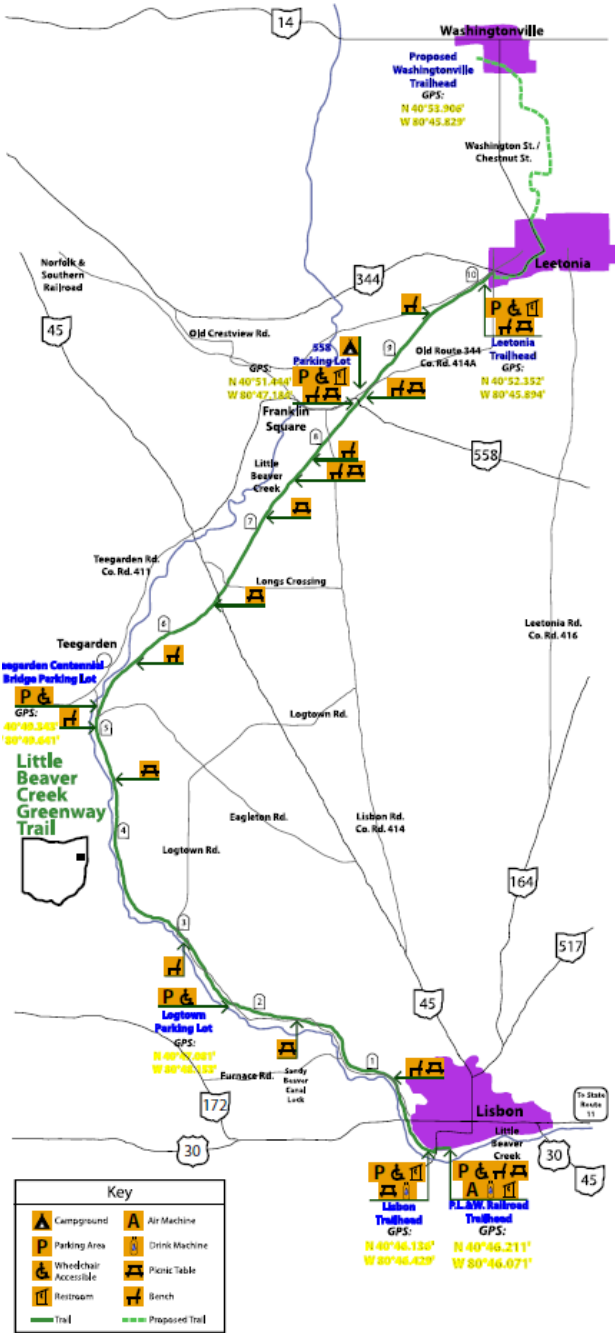
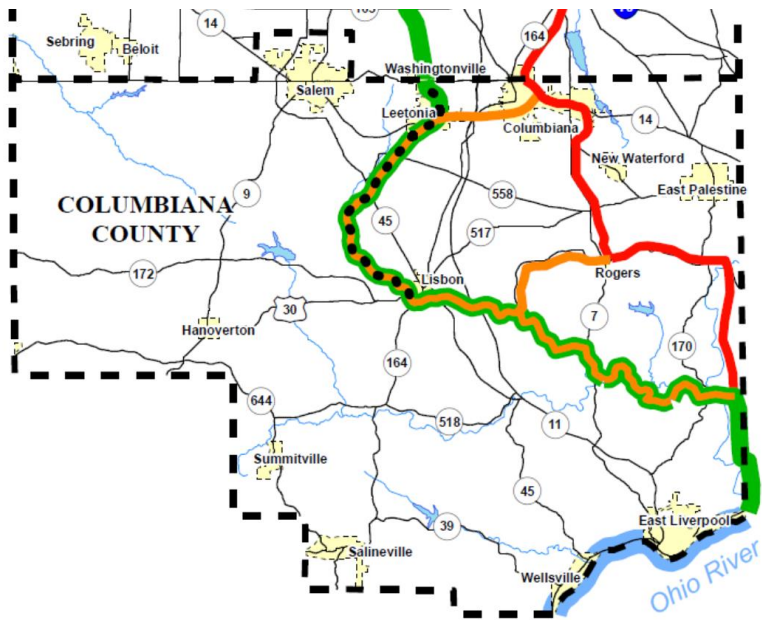
Points of Interest

TRUMBULL County



COLUMBIANA COUNTY

Located on the **Little Beaver Creek Greenway Trail** are several historical sites including the **Coke Oven Park** in the Village of Leetonia. This Post-Civil War era coke manufacturing facility contained nearly 400 working beehive ovens. Today, one can still see over 200 ovens on this site. The **Teegarden Covered Bridge** is south of the trail at Eagleton Glen Park. The village of Lisbon home to the oldest brick building in Ohio, a **restored train station** and many historical buildings. In the City of East Liverpool, visit the Ohio Historical Society's **Pottery Museum** and the **Carnegie Library**. Enjoy time on the **Broadway Wharf** watching tugboats push barges along the **Ohio River**. East of the city is the **"Point of Beginning,"** a monument designating the first survey pin placed (some say by George Washington) as the starting point for all surveys to follow the Ohio territories.

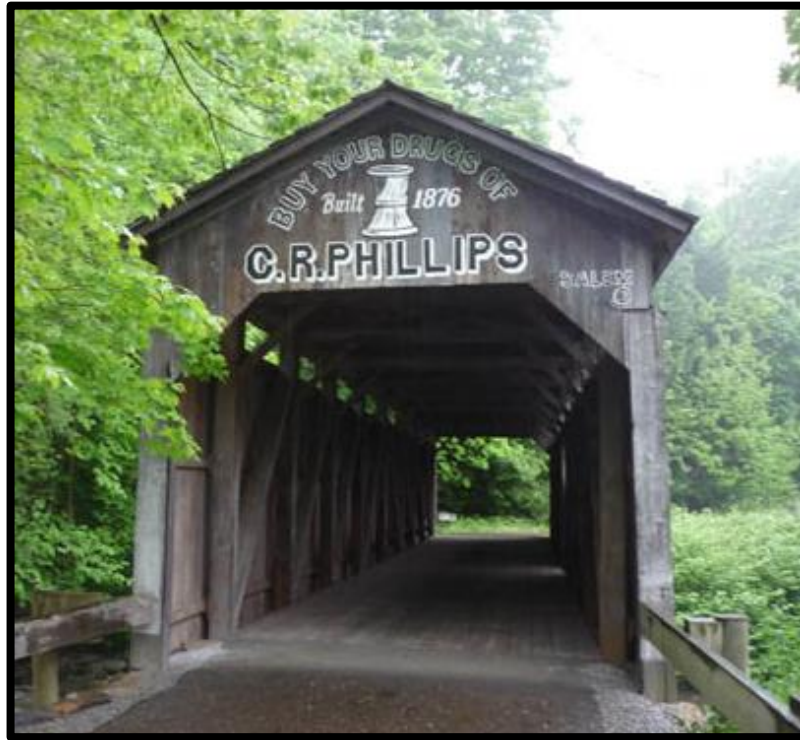


GREAT OHIO LAKE-TO-RIVER GREENWAY

“Our connection to nature, history and each other...”

COLUMBIANA County





GREAT OHIO LAKE-TO-RIVER GREENWAY

"Our connection to nature, history and each other..."

Points of Interest

COLUMBIANA County





GREAT OHIO LAKE-TO-RIVER GREENWAY

“Our connection to nature, history and each other...”

Points of Interest

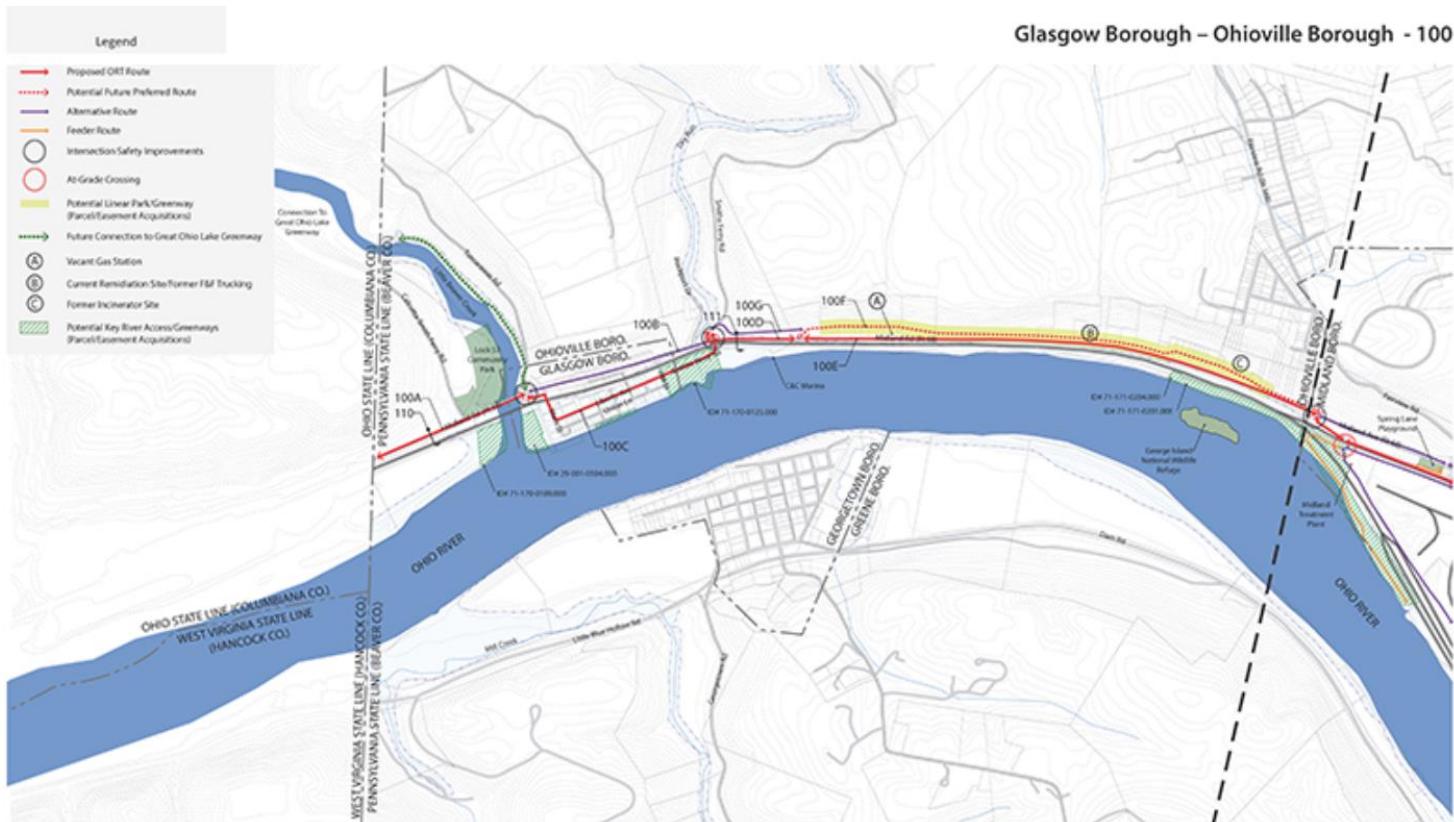
**COLUMBIANA
County**



OHIO RIVER GREENWAY TRAIL

OHIO RIVER TRAIL COUNCIL

- The Ohio River Trail Council is a volunteer-led multifaceted public benefit corporation whose mission is to establish, promote, protect and preserve a multi-use trail, the Ohio River Trail, along the Ohio River and its tributaries.



INDUSTRIAL HEARTLAND TRAILS COALITION

“I HEART TRAILS”

- The Industrial Heartland Trails (I Heart Trails) Coalition is a group of trail builders and supporters collaborating to complete and connect a system of 1,450 miles of shared use trails. The goal is to connect the [four-state trail network](#) so that local and visiting trail users can walk and bike from trail to trail, city to city, and town to town.
- Trail Gaps
- GIS Mapping
- Economic Impact Studies
- Trail User Counts and Surveys
- Regional support / Numerous Partners / Networking
- Technical Expertise and Experience



I HEART TRAILS

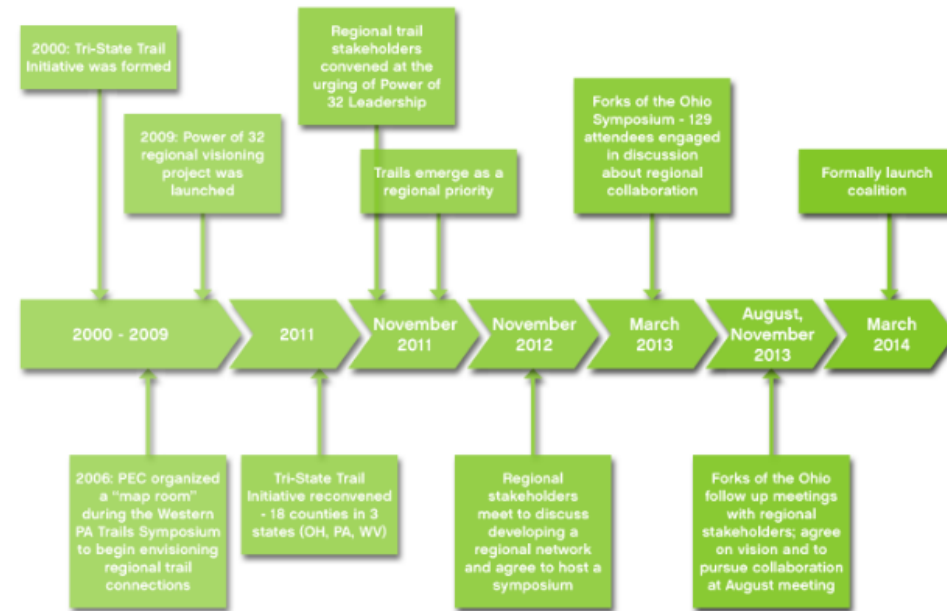
Project Timeline and Background Information from the Industrial Heartland Trails (I Heart Trails) Coalition website

- Tri-State Initiative (18)
- Power of 32
- Steering Committee
- Mega-Corridors
- # of States / Counties
- % Completed

Largest Bikeway Network Initiative in North America!



Project Timeline



WHAT'S IN A NAME? The Industrial Heartland Trails Coalition renamed itself in early 2015 following an extensive branding process. What a daunting task! The 53-county area includes mountains; rivers and streams; farmland; national and state parks; urban and rural settings; industry; and one of the Great Lakes, Erie.

While the geographic "heartland" may be west of here, a rich extractive and manufacturing history allows us to make the "industrial heartland" claim. An industrial legacy is evident on most any trail in the region. We bike and jog along old coke ovens, repurposed railroad viaducts, and smokestacks-turned-landmarks. Most of the trails themselves make use of converted rail corridors and canal towpaths! Not only this, but the branding process revealed that we in this region view ourselves as friendly and hospitable...qualities one might encounter in the "heartland." So there you have it. The blend of paying homage to our industrial heritage and a down-to-earth approachability led us to our name.



INDUSTRIAL HEARTLAND TRAILS COALITION



Pittsburgh
to Ashtabula
MEGA
CORRIDOR

Great Ohio
Lake-to-River
Greenway

Ohio River
Greenway Trail



I HEART TRAILS

Blog on
Rails-to-Trails
Conservancy
website showcasing
the efforts of the
Industrial Heartland
Trails (I Heart Trails)
Coalition in the
development of a
1,450 mile network of
off-road, multi-use
trails



[ABOUT](#) [BLOG](#) [MAGAZINE](#) [RESOURCES](#) [STORE](#) [FIND A TRAIL→](#)

[Donate](#)

[Renew Membership](#)

[Create Account](#) [Log in](#) [Get eNEWS](#)

[Experience Trails](#)

[Build Trails](#)

[Policy](#)

[Our Work](#)

[Take Action](#)

[Support Us](#)

[Home](#) > [Trailblog](#) > 1,450-Mile Developing Trail Network to Revitalize America's Industrial Heartland

1,450-Mile Developing Trail Network to Revitalize America's Industrial Heartland

Posted 03/29/16 by [Jake Lynch](#) in [Building Trails](#), [America's Trails](#)



Celebrating Our Past and
Our Future



RTC is pleased to celebrate our 30th anniversary in 2016! Check out our [interactive timeline](#) and [expanding 30th anniversary blogs series](#) for stories highlighting the evolution of RTC and the rail-trail movement.

Blog Categories

[Trail Use](#)
[America's Trails](#)
[Building Trails](#)
[Policy](#)



I HEART TRAILS

Article on I Heart Trails website showcasing the presentation of the Industrial Heartland Trails (I Heart Trails) Coalition network at the 2015 International Trails Symposium in Portland, Oregon.

[ABOUT](#)[LINKS & RESOURCES](#)[SUPPORT](#)[CONTACT](#)

IHTC PRESENTATION AT INTERNATIONAL TRAILS SYMPOSIUM

Posted on **March 26, 2015** by **Colleen McDonough**



May 17-20

Eric Oberg of Rails-to-Trails Conservancy and Frank Maguire of PEC were selected to speak about the Industrial Heartland Trails Coalition at American Trails' International Trails Symposium in Portland, OR, taking place May 17-20. Eric and Frank will work with other regional trail project leaders from around the Country on a three hour "core track" that

SEARCH

RECENT POSTS

[First Blog Post](#)

[Pennsylvania Rail Trail Sojourn](#)

[IHTC Presentation at International Trails Symposium](#)

[West Virginia Rail-Trail Sojourn](#)

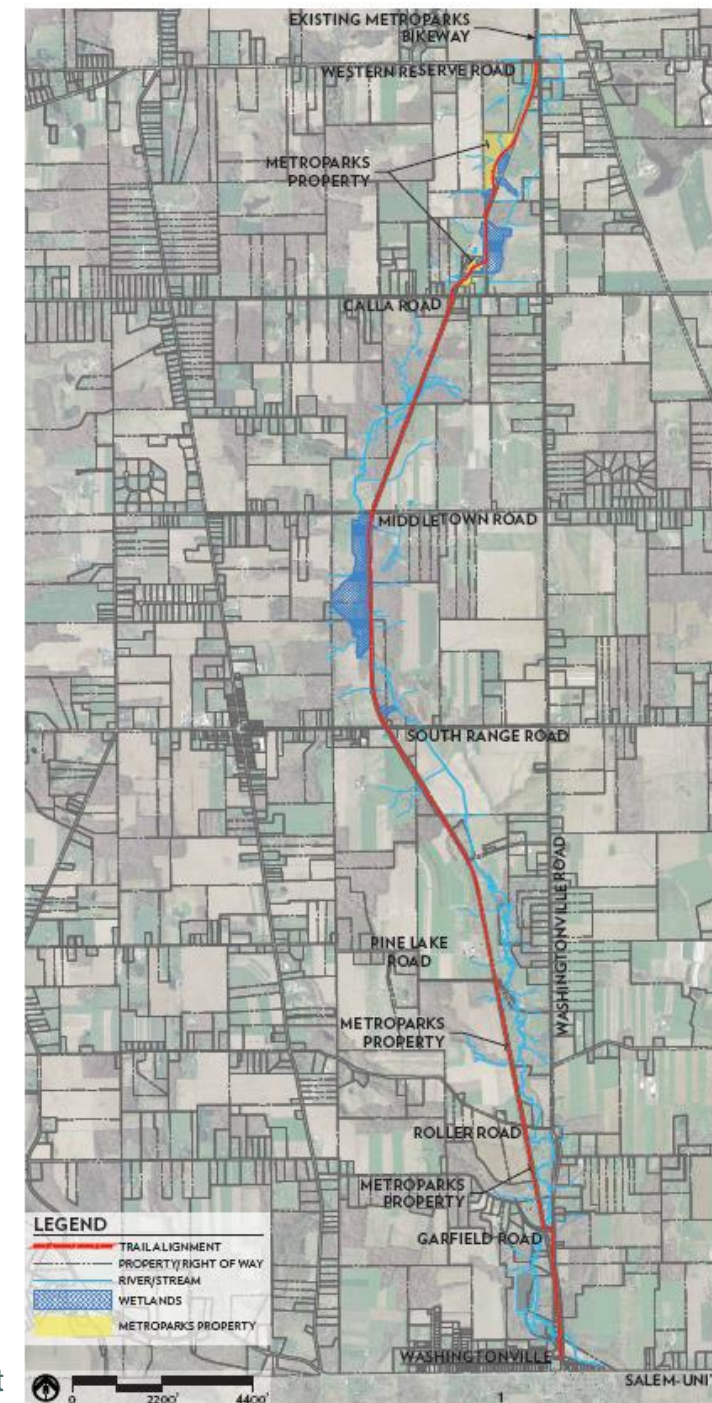
RECENT COMMENTS



Mill Creek MetroParks Bikeway Phase III

GENERAL

- Project Description – Acquisition, design/engineering and construction of a ten-foot wide asphalt pavement bikeway from High Street (Village of Washingtonville) to Western Reserve Road (Green/Canfield Township line), mostly on the historic railroad right-of-way
- 6.4 total miles; MetroParks acquired 1.8 miles of rail line in 1999; 4.6 miles to be acquired
- Southerly End – Washingtonville Road / SR 14 Intersection Safety Upgrade
 - \$1,600,000 partnership project by ODOT D-11, ODOT D-4 and Eastgate
 - Realignment of the intersection w/ new traffic light
 - Bikeway connection constructed from SR 14 to High Street
- Northerly End – Existing terminus of the MetroParks Bikeway
- Alignment generally follows Cherry Valley Run through an agricultural/rural area of Mahoning County

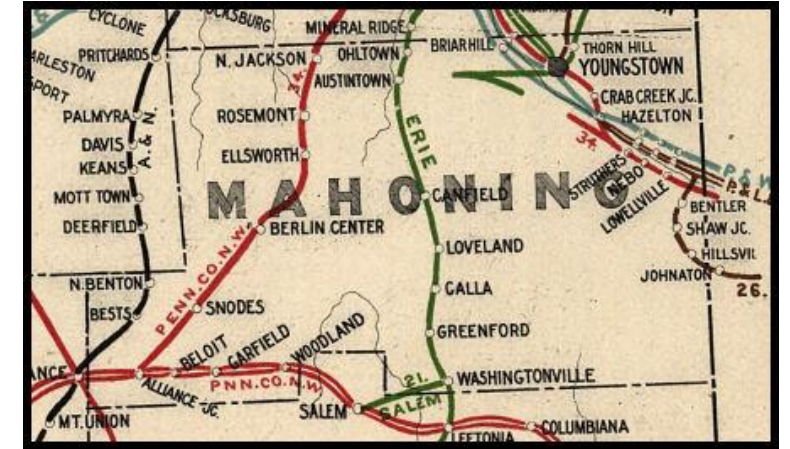


Phase III Alignment

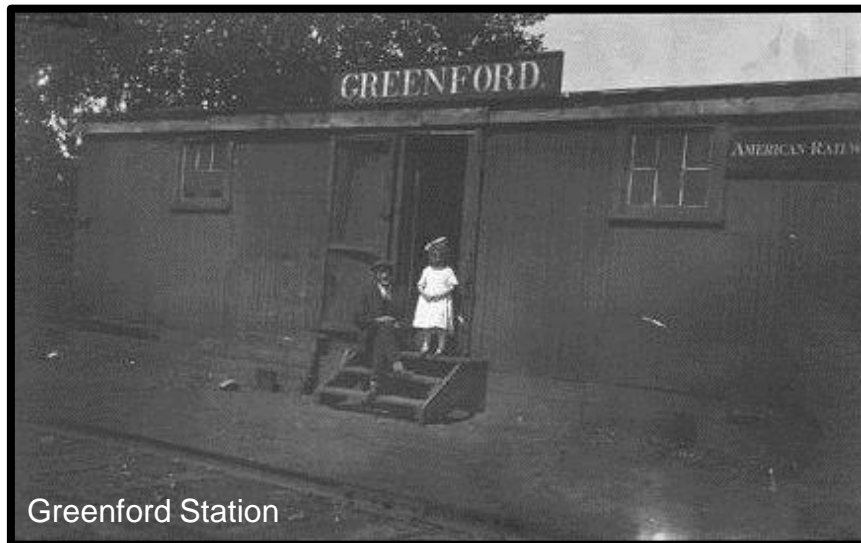
Mill Creek MetroParks Bikeway Phase III

PROJECT DEVELOPMENT

- Feasibility Study & Preliminary Alignment
 - Consultant Agreement with Shaw, Weiss & DeNaples in 1995
 - Studied alignment options and recommended historic rail line as preferred
 - Historic railway stations: Greenford and Calla



Historic Railway Map



Greenford Station



Calla Station



Mill Creek MetroParks Bikeway Phase III

PROJECT DEVELOPMENT

- Final Alignment, Right-of-Way Plans and Property Acquisition
 - \$364,000
 - 100% funding – 80% FHWA transportation funds through congressional earmark by Ted Strickland (2005); 20% STP funds by Eastgate Regional Council of Governments
- Environmental documentation for project was prepared by the MetroParks and approved in December 2007
- Consultant Agreement executed with GPD Group in May 2010
- Public meeting conducted in July 2012
- Right-of-Way drawings are substantially complete

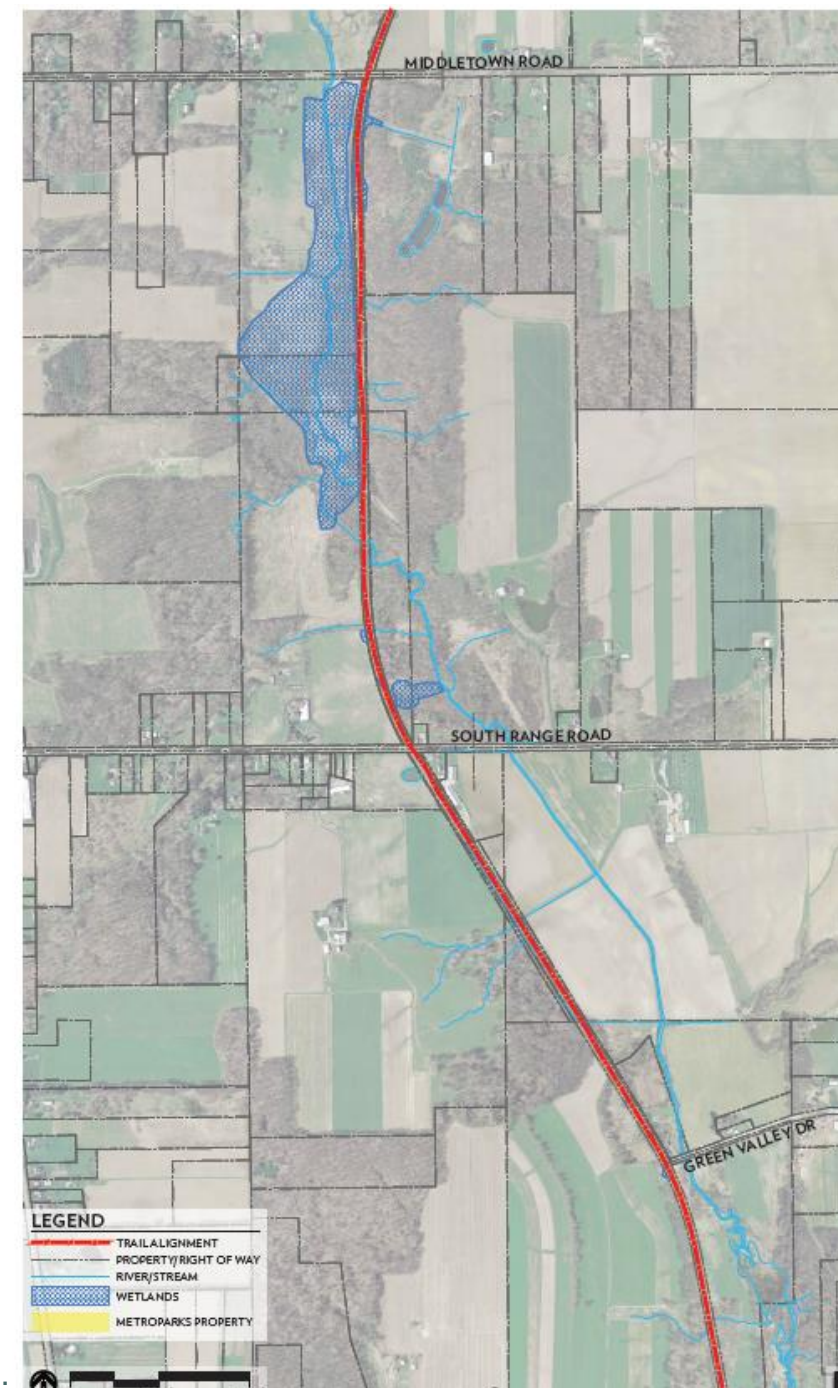


High St. to Pine Lake Rd.

Mill Creek MetroParks Bikeway Phase III

PROJECT DEVELOPMENT

- Design & Engineering
 - \$552,650
 - 80% FHWA CMAQ funds; 20% MetroParks
 - Consultant Agreement executed with Environmental Design Group (EDG) in September 2014
- Completed: Aerial mapping; environmental site assessments & studies; preliminary bridge design; preliminary Stage 1 drawings

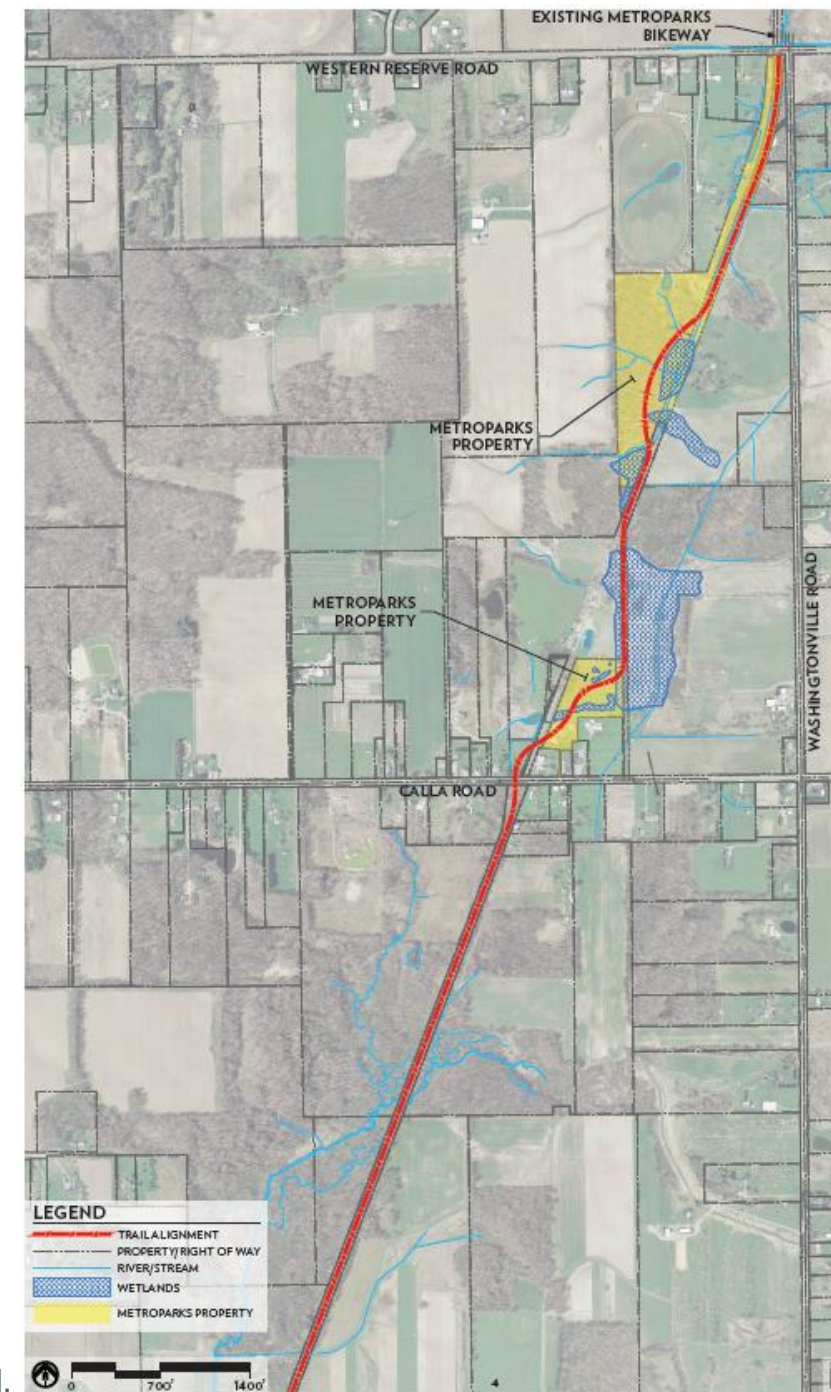


Pine Lake Rd. to Middletown Rd.

Mill Creek MetroParks Bikeway Phase III

PROJECT DEVELOPMENT

- Construction
 - \$3,551,062
 - 80% FHWA CMAQ funds; 20% MetroParks
 - Currently programmed in federal fiscal year 2018 (July 2017 – June 2018)



Mill Creek MetroParks Bikeway Phase III

CURRENT STATUS

- Right-of-Way plans are nearing completion
- Legal descriptions, deed research and appraisal work is ongoing
- Property acquisition expected to begin soon
- Drainage design and hydraulics work is ongoing
- Stage 2 drawings to be completed by the end of December 2016
- Environmental document to be completed by August 2016
- Public meeting May 5, 2016, 6:00-8:00pm at the MetroParks Farm



MILL CREEK METROPARKS BIKEWAY

Thank you!
Questions?

