

Mill Creek Golf Course Improvement Plan

Improving Recreational Opportunity, Promoting Environmental Values, and Enhancing User Experiences

A comprehensive plan to enhance the recreational, educational, ecological, and functional qualities of the Mill Creek Golf Course. These improvements will increase the quality of the facility's amenities and ensure the longevity of the course, leading to an enhanced golfing experience.



A



Construct New Restrooms and Shelters

B



Enhance Tee Boxes

C



Restore Ecological Habitat

D



Construct Asphalt Cart Paths



Plan View of Golf Course Field House Area

E



Improve Irrigation and Drainage

F



Complete Bunker Restoration

G



Establish Learning Center with Practice Areas

H



Create Indoor Golf Teaching and Practice Area

I



Extend Hole 55 Outdoor Patio Space

J



Construct Indoor Cart Barn

K



Expand Outdoor Cart Parking Areas

L

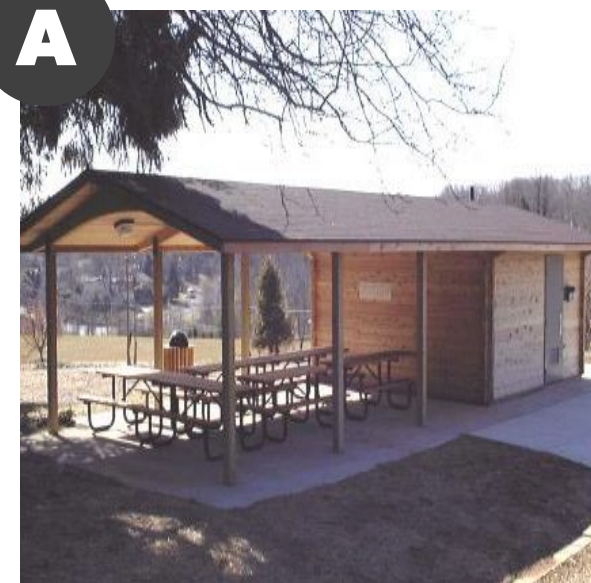


Improve Function of Parking Lot

Project Details and Financial Information

Cost Breakdown for Projects Listed in the Mill Creek Golf Course Plan

Detailed information regarding projects to enhance various amenities depicted in the Mill Creek Golf Course Improvement Plan. This plan aims to enhance the recreational, educational, ecological, and functional qualities of the Mill Creek Golf Course.



Replace Existing Infrastructure

Construct restroom facilities and shelters to accommodate needs and ensure player safety during poor weather conditions..

QTY: Three (3) Restrooms, Seven (7) Shelters

Per Unit Cost:
\$25,000 - \$30,000 / Restroom
\$10,000 / Shelter

Total Cost: \$160,000



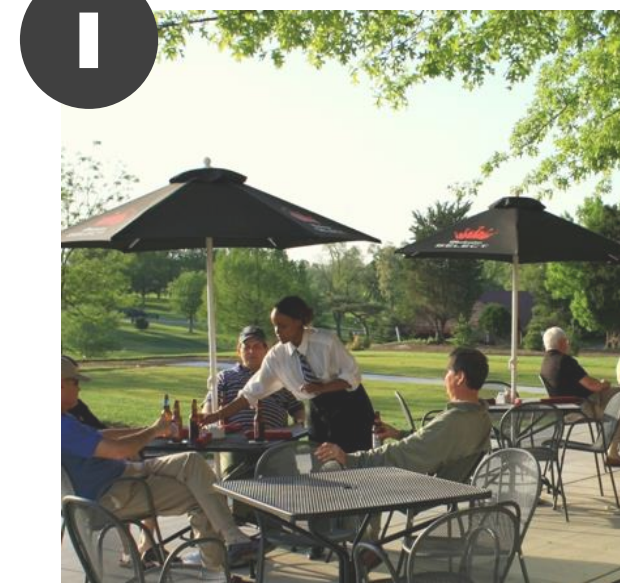
Improve Irrigation and Drainage

Update irrigation systems to increase turf quality and enhance maintenance techniques. Improve drainage to decrease standing water and increase course playability after harsh weather conditions.

QTY: 325 – 350 Acres

Per Unit Cost: \$3,500 / Acre

Total Costs: \$1,200,000



Extend Hole 55 Outdoor Patio Space

Expand outdoor patio space to the north side of the Field House, increasing restaurant capacity, and potential for events and programming.

QTY: 800 Square Feet

Per Unit Cost: \$50 / Square Foot

Total Cost: \$40,000



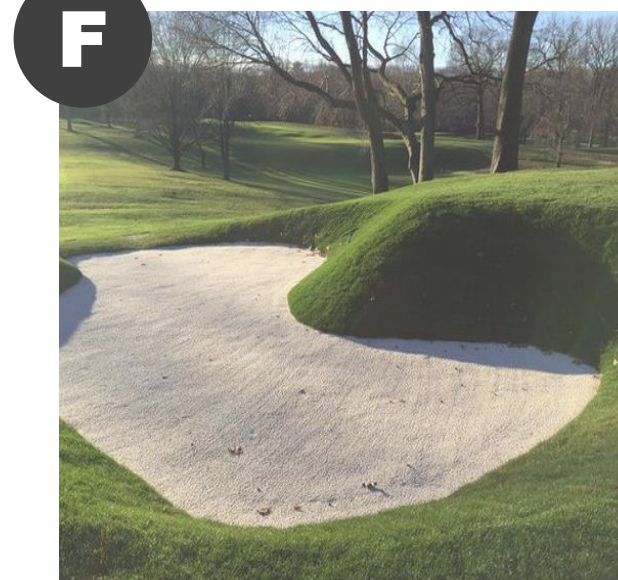
Enhance Tee Boxes

Replace benches at tee boxes on both courses. Provide additional amenities and create a uniform aesthetic all tee boxes.

QTY: 36 Tees

Per Unit Costs: \$2,500 / Tee

Total Cost: \$90,000



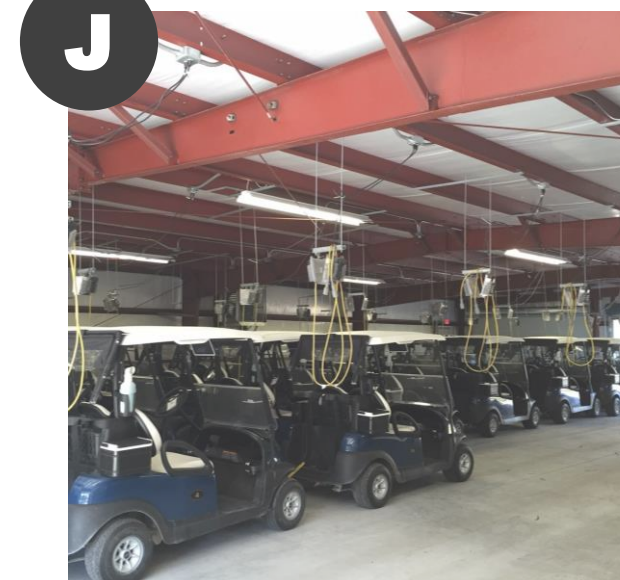
Complete Bunker Restoration

Restore bunkers to enhance drainage, eliminate standing water, and improve play. Bunker restoration will reflect historic design and attract more events.

QTY: 85 Bunkers Remaining

Per Unit Cost: \$5,000 - \$6,000 / Bunker

Total Cost: \$510,000



Construct Indoor Cart Barn

Construct indoor cart barn to protect 130 carts and other equipment from inclement weather, and helps to ensure the longevity of carts and course equipment. This structure will be located north of the Field House.

QTY: 4,500 Square Feet

Per Unit Cost: \$25 / Square Foot

Total Cost: \$120,000



Restore Ecological Habitat

Restore ecological function of streams meandering through the course. Restoration of riparian corridor will enhance wetlands and floodplains, improve stormwater management, and enhance biodiversity throughout the course.

QTY: \$3,800 Linear Feet of Stream

Per Unit Cost: \$50 - \$200 / Linear Foot

Total Cost: \$775,000



Establish Learning Center with Practice Areas

Expand outdoor practice green to include pitching, chipping, and putting areas on diverse topography. Create teaching and practice areas for all skill levels. Located near the Field House.

QTY: 56,000 Square Feet

Per Unit Cost: \$2.50 / Square Foot

Total Cost: \$125,000



Expand Outdoor Cart Parking Areas

Expand outdoor cart parking area to accommodate 36 more carts near the field house and create an arrival plaza for the learning center.

QTY: 6,500 Square Feet

Per Unit Cost: \$13 / Square Foot

Total Cost: \$85,000



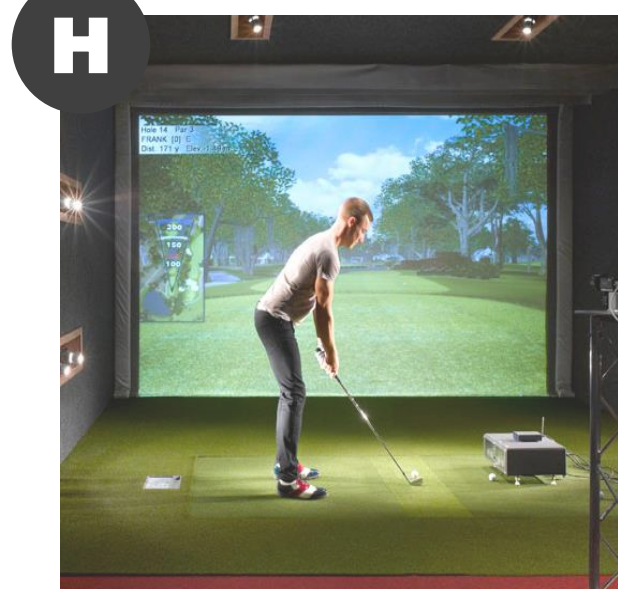
Construct Asphalt Cart Paths

Complete cart path paving on Holes 10, 13, 14, and 18 on the North Course and complete all cart paths on the South Course.

QTY: 21,000 Linear Feet

Per Unit Cost: \$11 / Linear Foot

Total Costs: \$225,000



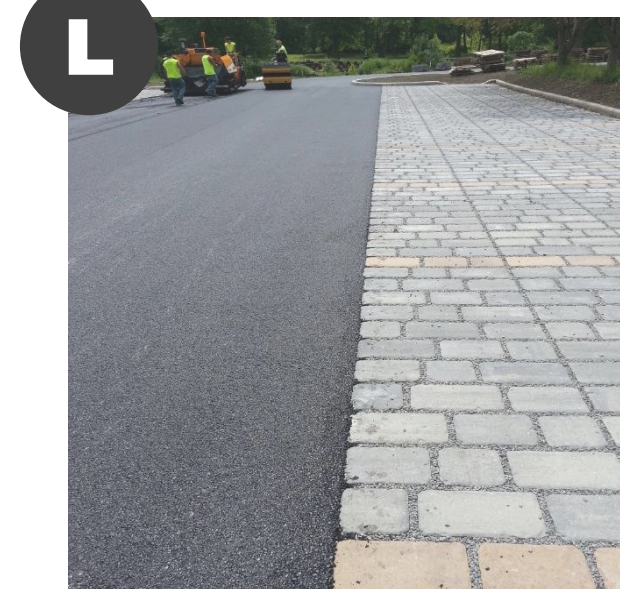
Create Indoor Golf Teaching and Practice Area

Create an indoor putting and swinging area and provide instructional opportunities with the installation of a Flightscope. To be located on the second floor of the Field House

QTY: 2,896 Square Feet

Per Unit Cost: \$85 / Square Foot

Total Cost: \$250,000



Improve Parking Lots

Rehabilitate parking lots to include green technology. Use of permeable pavement and rain gardens allows for better stormwater management.

QTY: 69,460 Square Feet (South Lot)
43,820 Square Feet (North Lot)

Per Unit Cost: \$12 / Square Foot

Total Costs: \$840,000 (South Lot), \$530,000 (North Lot)

Contact for More Information:

Brian Tolnar, *Golf Course Director*,
P: 330.740.7112 E: brian@Millcreekmetroparks.org

Lori Shandor, *Director of Development and Community Engagement*,
P: 330.702.3000 E: lorilyn@Millcreekmetroparks.org