



MetroParks Board Meeting

2018 Capital Improvement Projects

Stephen L. Avery
Planning & Operations Director

Last Edited: 3.12.18

Presentation Outline

- MetroParks Mission Statement
- Strategic Master Plan
- MetroParks Properties/Facilities
- Long Range Capital Planning
- 2018 Capital Improvements
- Contracted Design Services
- Comments/Questions?



Mission Statement

The mission of Mill Creek MetroParks is to provide park, recreational, educational and open space facilities of regional significance. In fulfilling this mission our objectives are:

- To be responsive to community needs
- To be environmentally sound
- To be adaptable
- To be economically feasible

Link to Mission Statement:

<http://www.millcreekmetroparks.org/contact/about/mission-statement/>



Strategic Master Plan

- Community Engagement
- Stewardship
- Our People
- Natural Resources
- Recreation & Education
- **Infrastructure**

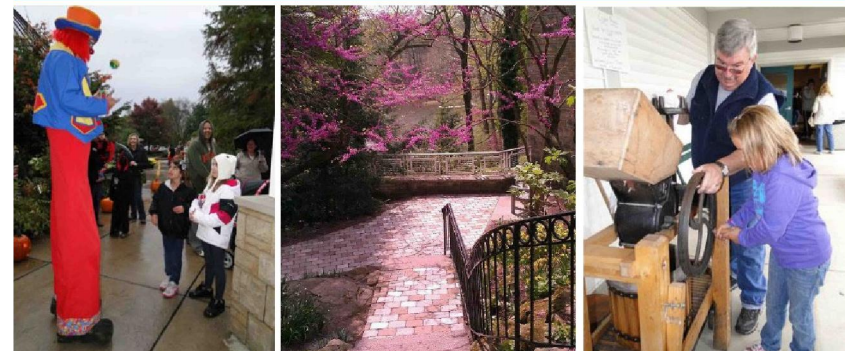
GOAL: “Create an effective capital improvement and maintenance plan to preserve the historic aspects of Mill Creek MetroParks as well as provide a safe and enjoyable experience.”

Link to Strategic Master Plan:

<http://www.millcreekmetroparks.org/wp-content/uploads/2013/11/Mill-Creek-MetroParks-Strategic-Master-Plan-FINAL.pdf>

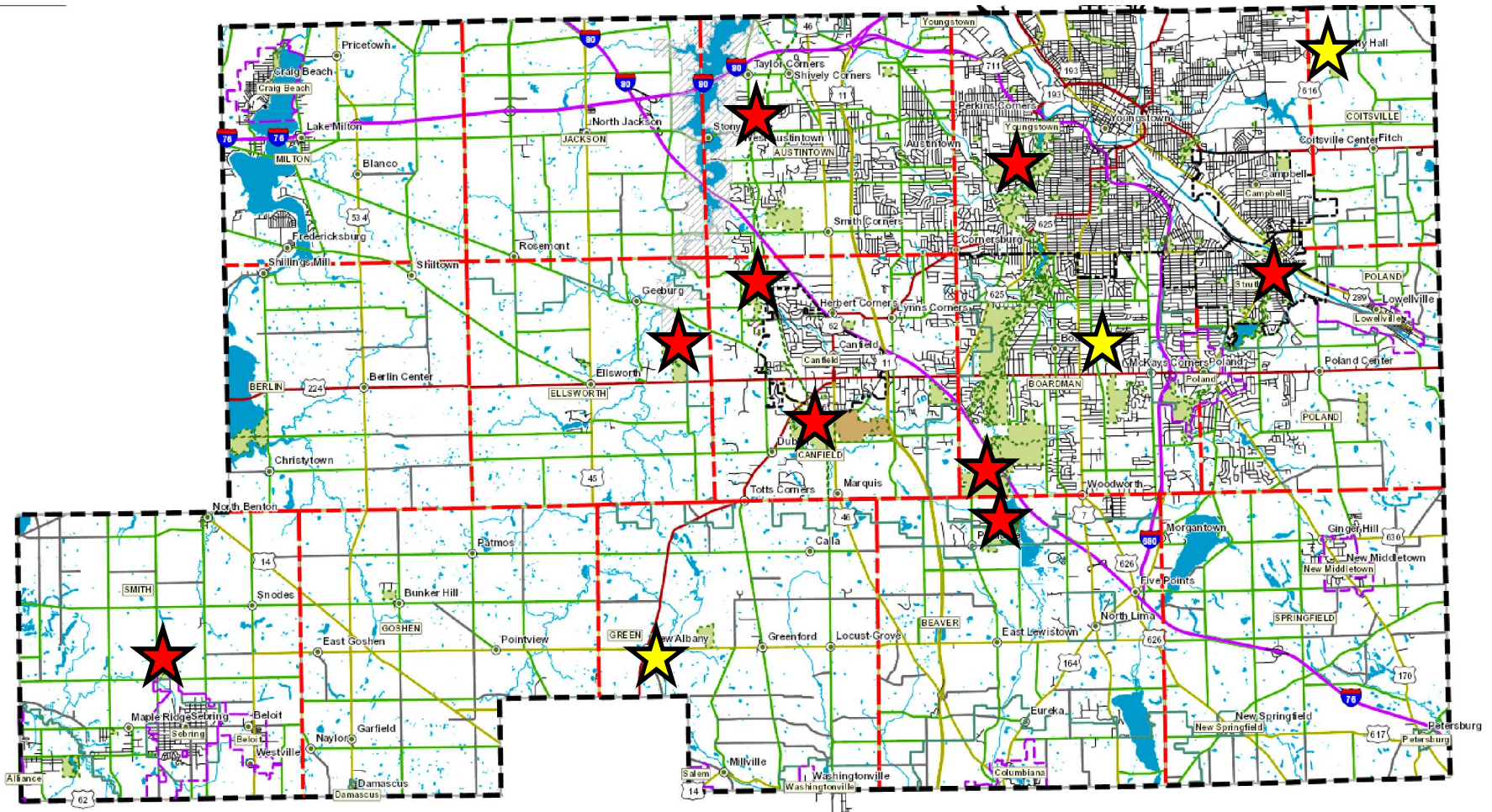


January 2013
Comprehensive Parks and Recreation
Strategic Master Plan

2018 Capital Improvements

MetroParks Properties/Facilities



Mill Creek MetroParks

- **Properties/Facilities**
 - Twelve (12) separate locations
 - 7 Townships
 - 3 Cities
 - 1 Village
- **Land Uses**
 - Active Recreation
 - Passive Recreation
 - Preserves
 - Working Farm
 - Bikeway
 - Equestrian
- **Statistics**
 - 4,517 acres
 - 20.37 miles of roads
 - 20.92 acres of parking lots
 - 27.17 miles hiking trails
 - 17.59 miles of paved multipurpose trails
 - 225,667 square feet of structures



Long Range Capital Improvement Planning

[illegible][illegible]

2018 Capital Improvements

millcreekmetroparks.org

Bridge Improvements

- \$250,000 Budgeted
- Idora Bridge
 - Substantially funded at \$200,000 through a FHWA Surface Transportation Program (STP) grant
 - Located in Mill Creek Park on East Park Drive, north of Lanterman's Mill
 - Replacement of retaining walls, concrete curbing, timber railing, approach slabs and asphalt pavement



Drive Improvements

- \$350,000 Budgeted
- West Newport Drive Improvements
 - From Sheban Dr. to Hampton Dr.
 - Linear grading/ditching
 - Drainage structure & pipe replacement
 - Guardrail repair/replacement
- West Newport Drive Resurfacing
 - Partially funded at \$126,933 through biennial ODOT Park District Road Improvement Fund
 - Asphalt paving, pavement markings and aggregate shoulders
- Annual Preventive Maintenance
 - Asphalt lane paving on various drives
 - Reapplication of pavement markings
 - Crack filling
 - Aggregate shoulders



Parking Lot Improvements

- \$150,000 Budgeted
- **Fellows Riverside Gardens**
 - Replacement of concrete crosswalks, pavement planing, asphalt overlay & pavement markings
- **Lake Newport Wetlands**
 - North Parking Lot
 - Pavement planing, asphalt overlay & pavement markings
- **Mill Creek Golf Course**
 - South Parking Lot
 - Area asphalt paving, crack filling, asphalt sealing, & pavement markings
- **Annual Parking Lot Preventive Maintenance Program**
 - Crack filling, asphalt sealing & pavement markings



Trail Improvements

- \$150,000 Budgeted
- Comfort Station at MetroParks Bikeway Farm Trailhead
 - Construction of new vault-type comfort station
- West Newport Drive – Improved Trail
 - Construction of aggregate trail along West Newport Drive, from Lake Newport Dam to the Saddle Bridge
- Ford Nature Center Hiking Trails
 - General improvements to the hiking trails directly adjacent to the FNC
- Hitchcock Woods Hiking Trail
 - Construction of bridges & adjustment of trail alignment
- Sebring Woods Hiking Trails
 - Construction of two bridges
- East Golf Hike & Bike Trail
 - Improvement of entrances from neighborhood



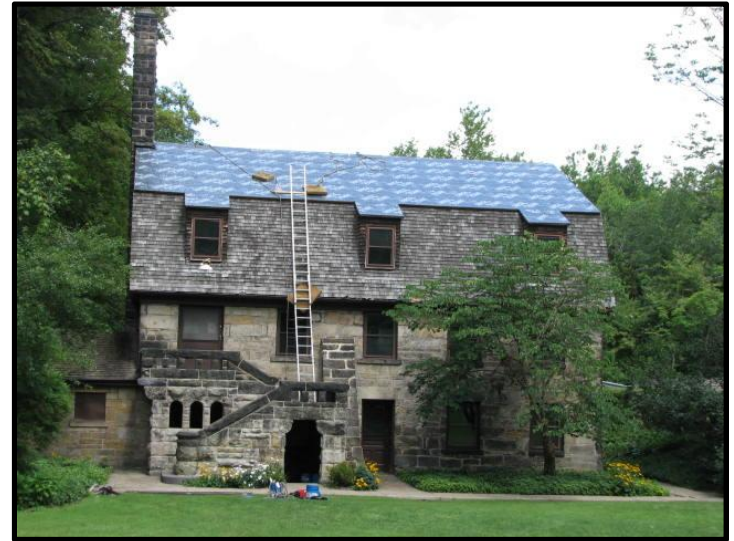
Signage Improvements

- \$25,000 Budgeted
- Facility
 - Slippery Rock Pavilion
 - East Cohasset Hike & Bike Trail
 - East Golf Hike & Bike Trail – Neighborhood Entrances
 - Yellow Creek Park
 - Sawmill Creek Preserve
- Hiking Trails
 - Yellow Creek Park
 - Sebring Woods
 - Mill Creek Park (Calvary Run, Amphitheater, Cascade Ravine)



Pavilion Improvements

- \$50,000 Budgeted
- Chestnut Hill Pavilion
 - Replacement of roofing with synthetic slate shingles
 - New gutters & downspouts
- Pioneer Pavilion
 - Replacement of lower mansard roofing with synthetic shake shingles
 - Refinishing of ballroom floor
- Bears Den Cabin
 - Replacement of ceiling in meeting room
 - Replacement of lighting in meeting room
 - Installation of compliant safety exit lighting
 - Kitchen renovations, including new lighting, counters, sink, refrigerator, painting



MetroParks Farm Improvements

- \$25,000 Budgeted
- Leffingwell Barn
 - Replacement of siding
 - Painting
 - Structural repairs
 - Gutters/downspouts
- Apple Barn
 - Renovations
 - Construction of Farm Supervisor's Office
- Barn 3
 - Replacement of metal roofing
- Education Building
 - Furnace Replacement



2018 Capital Improvements

Wick Recreation Area

■ Walkway Extension

- \$30,000 budgeted
- Construction of eight feet (8') wide asphalt walkway
- Aggregate base and storm drainage installed in 2017
- Topsoil shoulders – final grading
- Asphalt paving, grass seeding & mulching

■ Batting Range

- \$15,000 budgeted
- Replacement of nylon netting

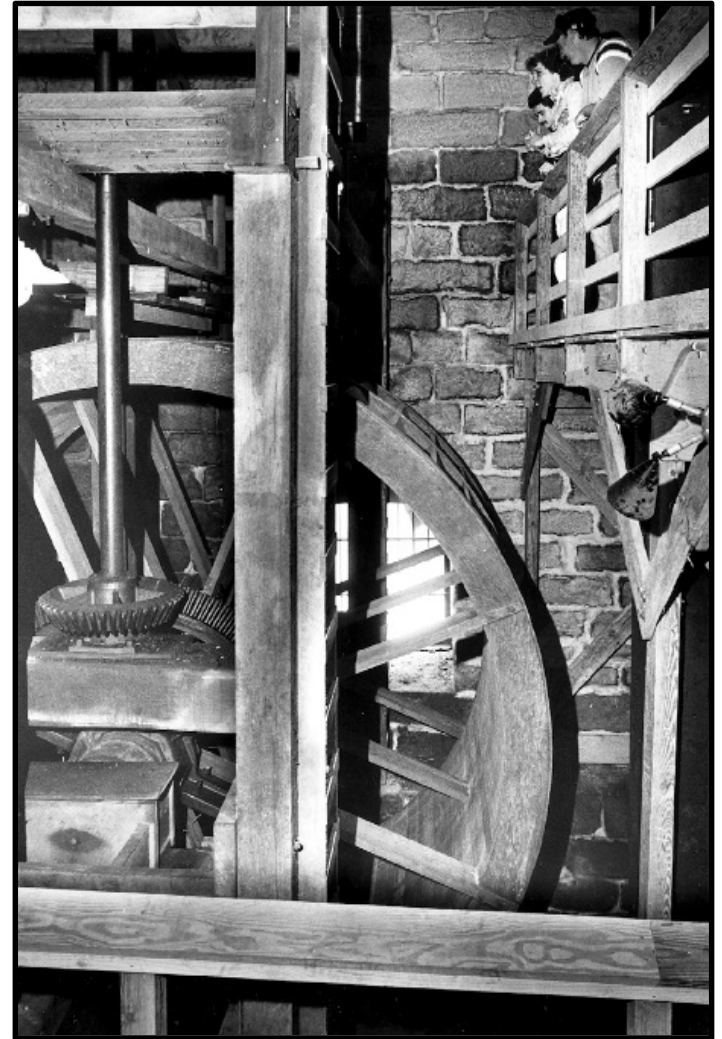
■ Tennis Courts

- \$8,000 budgeted
- Installation of wind screens on chain link fencing



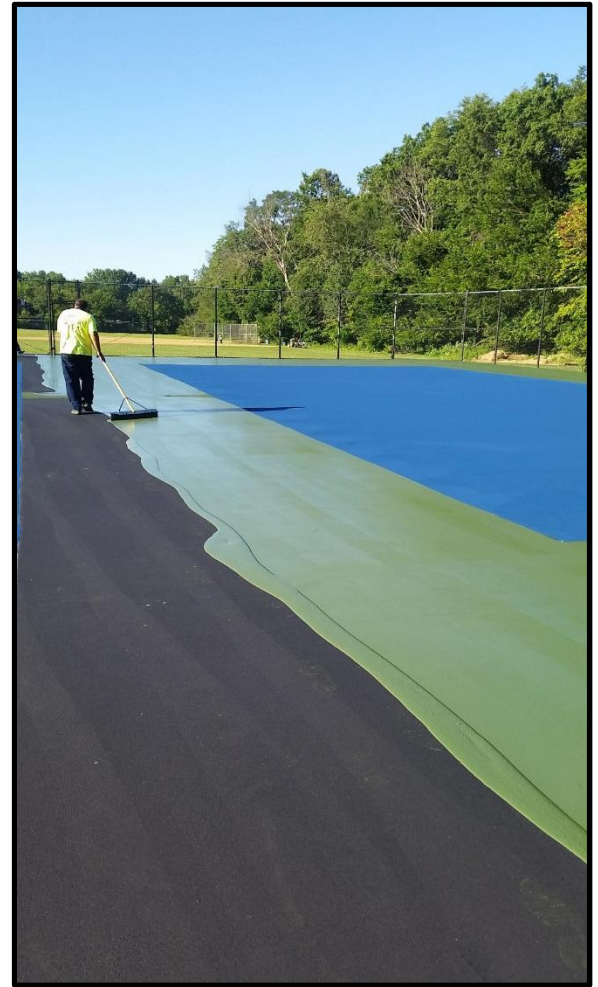
Lanterman's Mill

- \$25,000 Budgeted
- Waterwheel Improvements
 - New light fixtures to improve lighting of the waterwheel and surrounding components
 - New wiring, conduit, panels, switches, dimmers, receptacles, etc.
 - Replacement of interpretive signage



Scholl Recreation Area

- \$25,000 Budgeted
- Tennis & Basketball Courts
 - Acrylic resurfacing
 - Chain link fence repairs
 - Addition of pickleball court



Mill Creek Golf Course

- \$250,000 Budgeted
- Bunker Restoration – North Course
 - Reconstruction of approximately thirty (30) sand bunkers
 - Will reestablish Golf Course Architect Donald Ross's original, historic bunker design
 - Installation of new drainage in bunkers



Mill Creek Wildlife Sanctuary & Mill Creek Preserve

- \$35,000 Budgeted
- Pond & Dike Improvements
 - Removal of woody vegetation
 - Reconstruction of dikes due to erosion & rodent damage
 - Replacement of drainage control piping & structures
 - Replacement of bird nesting boxes
- Vegetative Invasive Species Control



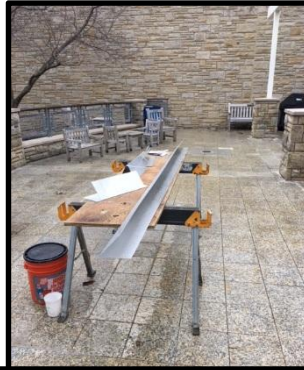
Sawmill Creek Preserve Improvements

- \$40,000 Budgeted
- Parking Lot
 - Construction of new aggregate parking lot
 - Located on South Turner Road
- Hiking Trail
 - Establishment of a circular hiking trail



Fellows Riverside Gardens Improvements

- **\$153,650 Budgeted**
 - \$75 Endowment/\$25k FFRG/\$53,650 MetroParks
- **Davis Education & Visitor Center**
 - Gutter/downspout/fascia repairs
 - Café Terrace tile repairs
 - White Garden Terrace tile repairs
 - Observation Tower refinishing
 - Shop In the Gardens interior lighting upgrade
- **Site Improvements**
 - Flagstone replacement on North Terrace
- **High Tunnel (Greenhouse)**
 - Construction of new structure at Service Facility
 - Installation of new gas & electric lines



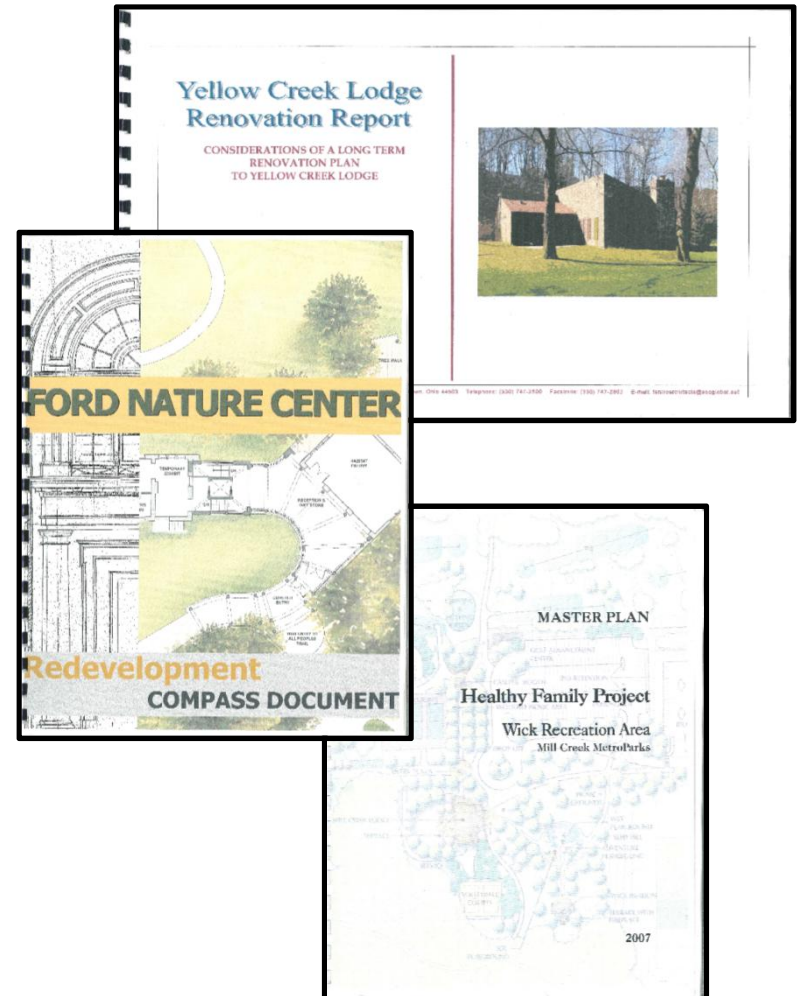
Lake Newport Boat Launch Improvements

- \$45,000 Budgeted
- Dock Replacement
 - Construction of new dock/deck
 - Construction of a sand launching area for canoes/kayaks



Professional Contracted Design Services

- Vickers Nature Preserve/BHP
 - \$25,000 Budgeted
 - Preparation of a Facility Master Plan
- Mill Creek Golf Course
 - \$10,000 Budgeted
 - Design of the Outdoor Learning Center
- Wick Recreation Area
 - \$75,000 Budgeted
 - Design and construction drawings for a new Maintenance Facility



Comments or Questions?



EXPLORE. EXPERIENCE. ENJOY.

millcreekmetroparks.org

