



MetroParks Board Meeting

2020 Capital Improvement Projects

Stephen L. Avery
Planning & Operations Director

Last Edited: 1.08.20

Presentation Outline

- MetroParks Mission Statement
- Strategic Master Plan
- MetroParks Properties/Facilities
- Long Range Capital Planning
- 2020 Capital Improvements
- Professional Consultant Services
- Comments/Questions?



Mission Statement

The mission of Mill Creek MetroParks is to provide park, recreational, educational and open space facilities of regional significance. In fulfilling this mission our objectives are:

- To be responsive to community needs
- To be environmentally sound
- To be adaptable
- To be economically feasible

Link to Mission Statement:

<http://www.millcreekmetroparks.org/contact/about/mission-statement/>



Strategic Master Plan

- Community Engagement
- Stewardship
- Our People
- Natural Resources
- Recreation & Education
- **Infrastructure**

GOAL: “Create an effective capital improvement and maintenance plan to preserve the historic aspects of Mill Creek MetroParks as well as provide a safe and enjoyable experience.”

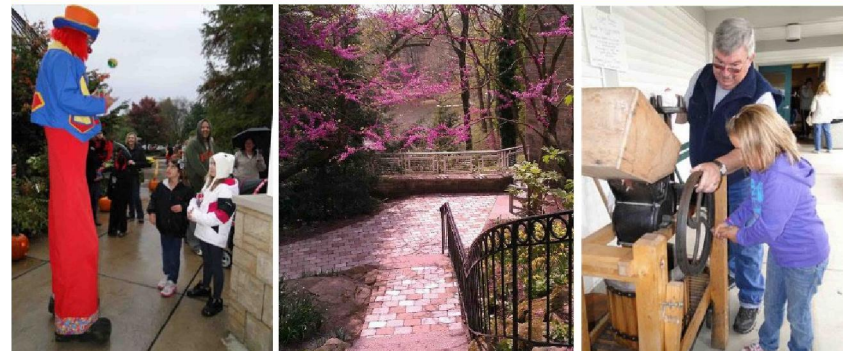
Link to Strategic Master Plan:

<http://www.millcreekmetroparks.org/wp-content/uploads/2013/11/Mill-Creek-MetroParks-Strategic-Master-Plan-FINAL.pdf>



January 2013
Comprehensive Parks and Recreation
Strategic Master Plan

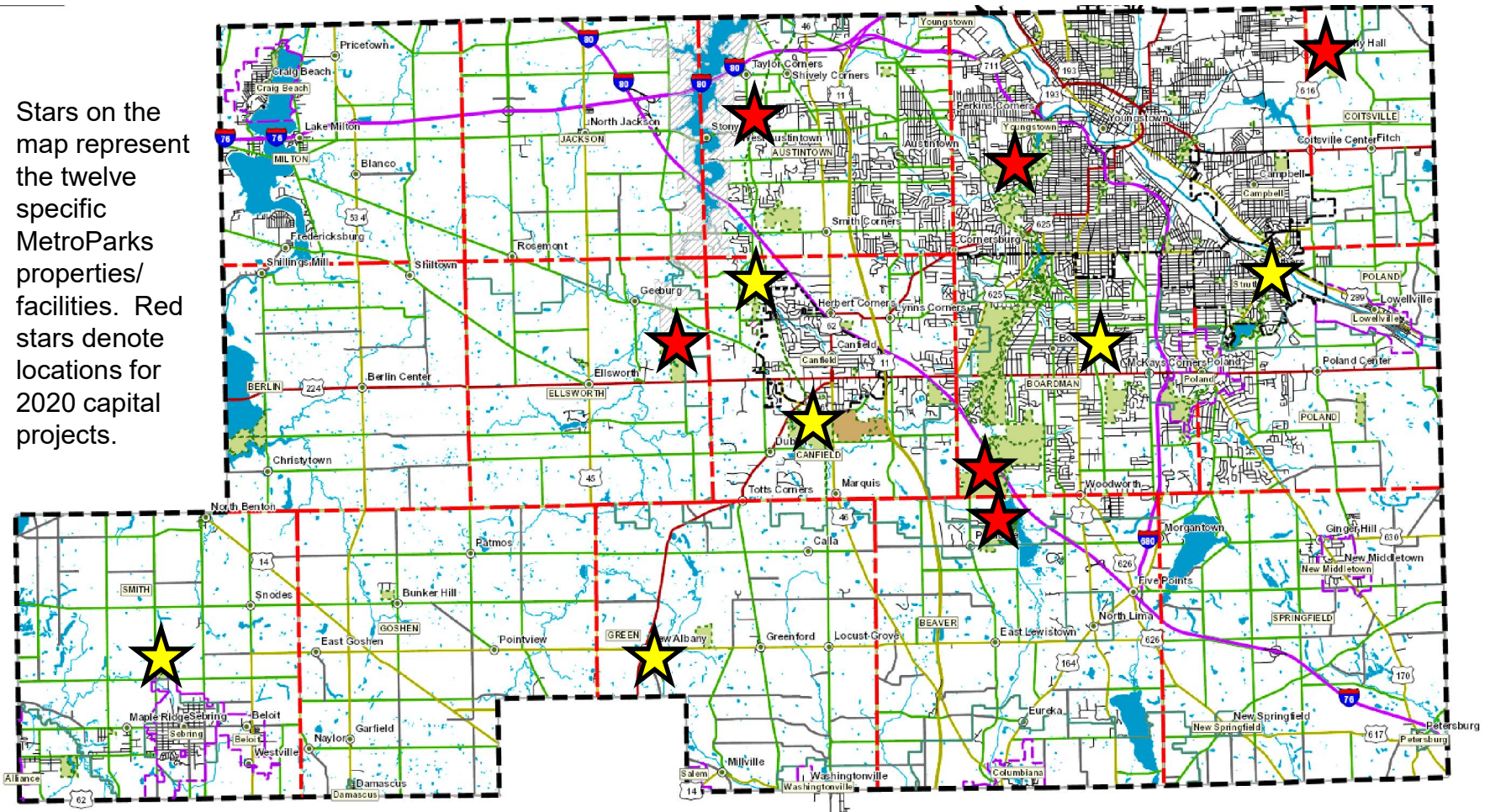
pros
consulting
LLC



2020 Capital Improvements

MetroParks Properties/Facilities – Mahoning County

Stars on the map represent the twelve specific MetroParks properties/facilities. Red stars denote locations for 2020 capital projects.



Mill Creek MetroParks

- **Properties/Facilities**
 - Twelve (12) separate locations
 - 7 Townships
 - 3 Cities
 - 1 Village
- **Land Uses**
 - Active Recreation
 - Passive Recreation
 - Preserves/Natural Areas
 - Working Farm
 - Bikeway
 - Equestrian
- **Statistics**
 - 4,542 acres
 - 20.37 miles of roads
 - 9 vehicular bridges on ODOT inventory; 9 stone arch bridges; 7 pedestrian bridges
 - 20.92 acres of parking lots
 - 27.17 miles hiking trails
 - 17.59 miles of paved multipurpose trails
 - 225,667 square feet of structures
 - 3 large lakes/dams; numerous ponds



Long Range Capital Improvement Planning

[illegible][illegible][illegible][illegible]

2020 Capital Improvements

millcreekmetroparks.org

Drive Improvements

- \$350,000 Budgeted
- East Newport Drive & Valley Drive
 - East Newport Dr. - From Shields Rd. to Kreider's Entrance
 - Valley Dr. - From East Park Dr. to Suspension Bridge
 - Partially funded through biennial ODOT Road Tax Allocation (\$123,316)
 - Storm drainage structure & pipe replacement, ditch excavation/grading, guardrail improvements, asphalt paving, pavement markings, aggregate shoulders
- Annual Preventive Maintenance
 - Reapplication of pavement markings
 - Crack filling
 - Aggregate shoulders



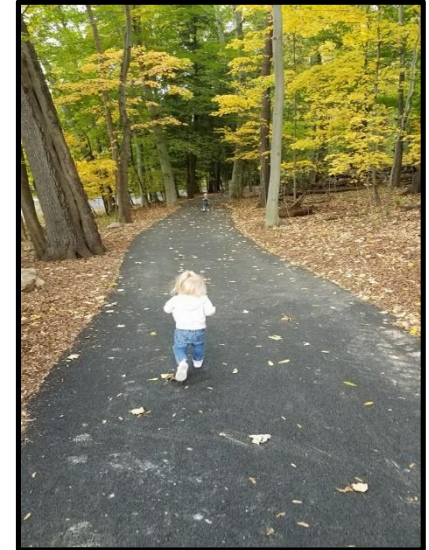
Parking Lot Improvements

- \$150,000 Budgeted
- East Golf Hike/Bike & Flats
 - East Golf Hike/Bike parking lot on West Golf Dr.
 - Flats parking lot (at Suspension Bridge)
 - Improve traffic circulation (Flats)
 - Increase number of stalls (Flats)
 - Excavation, grading, asphalt paving & pavement markings
- Annual Preventive Maintenance
 - Crack filling, asphalt sealing & pavement markings



Trail Improvements

- \$175,000 Budgeted
- MetroParks Bikeway
 - Asphalt repair, asphalt paving & aggregate shoulders
- Vickers Nature Preserve
 - Equestrian trail improvements
 - Partially funded by private donation
- Hitchcock Woods Hiking Trail
 - Construction of bridges
- East Golf Hike & Bike Trail
 - Improvement of entrances from neighborhood



Signage Improvements

- \$25,000 Budgeted
- Facility
 - McGuffey Wildlife Preserve
 - Mill Creek Preserve
- Mill Creek Park Road Names & Wayfinding



Pavilion Improvements

- \$25,000 Budgeted
- Old Log Cabin & Scholl Pavilion
 - Repairs to masonry chimney (Log Cabin)
 - Reconstruct stone retaining wall (Log Cabin)
 - Masonry cleaning & repairs (Scholl Pavilion)



Comfort Station Improvements

- \$50,000 Budgeted
- Lily Pond
 - Substantially funded by an ODNR Nature Works grant (\$37,245)
 - Construction of new vault-type comfort station
 - Demolition of existing comfort station at Birch Hill Cabin



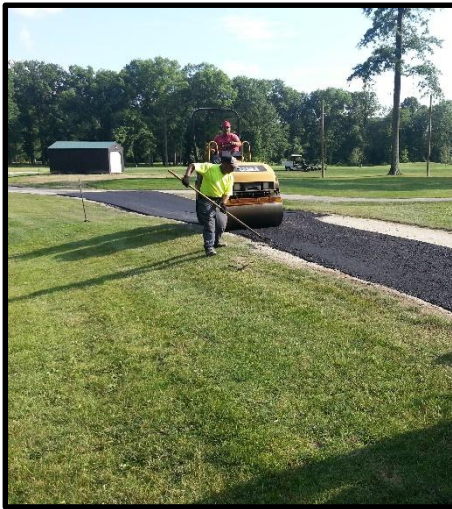
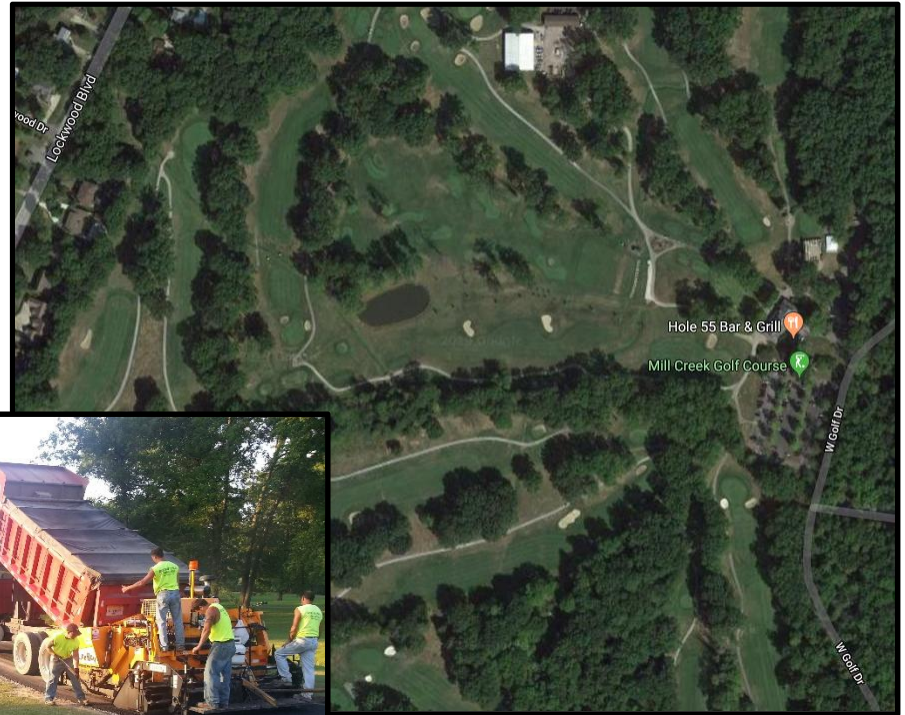
Bridge Improvements

- \$200,000 Budgeted
- Old Orchard Bridge
 - Located on Chestnut Hill Drive in Mill Creek Park
 - Substantially funded through a FHWA Surface Transportation Block Grant (\$160,000)
 - Waterproof the bridge decking, repair concrete walks and timber railings, cleaning and tuck-pointing stone masonry and asphalt paving



Mill Creek Golf Course

- \$325,000 Budgeted
- Cart Paths
 - Asphalt paving of existing aggregate cart paths
 - Approximately 2.6 miles



- \$500,000 Budgeted

- Maintenance Facility

-
- A large, dark-colored building with a gabled roof and a stone chimney, surrounded by trees and a grassy area. A picnic table is visible in the foreground.



Ford Nature Center Redevelopment

- \$3,055,000 Budgeted
 - \$3 million building project
 - \$55,000 hazardous materials abatement
- Redevelopment
 - Renovation of estate house structure
 - Renovation of garage structure
 - Site improvements
 - Nature education exhibits (2021)



Mill Creek Wildlife Sanctuary & Mill Creek Preserve

- \$40,000 Budgeted
- Pond & Dike Improvements
 - Removal of woody vegetation from dikes
 - Reconstruction of dikes due to erosion & rodent damage
 - Replacement of drainage control piping & structures
 - Replacement of bird nesting boxes
- Vegetative Invasive Species Control



McGuffey Wildlife Preserve Improvements

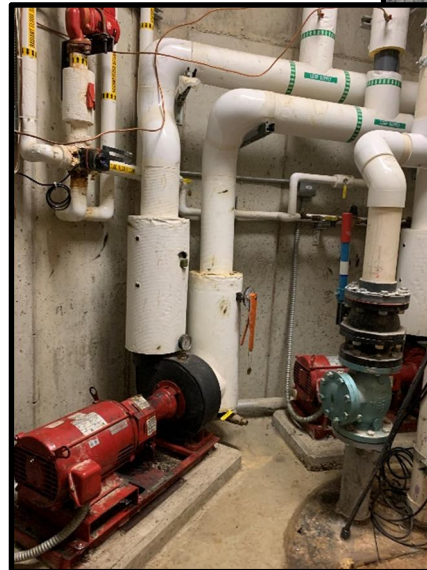
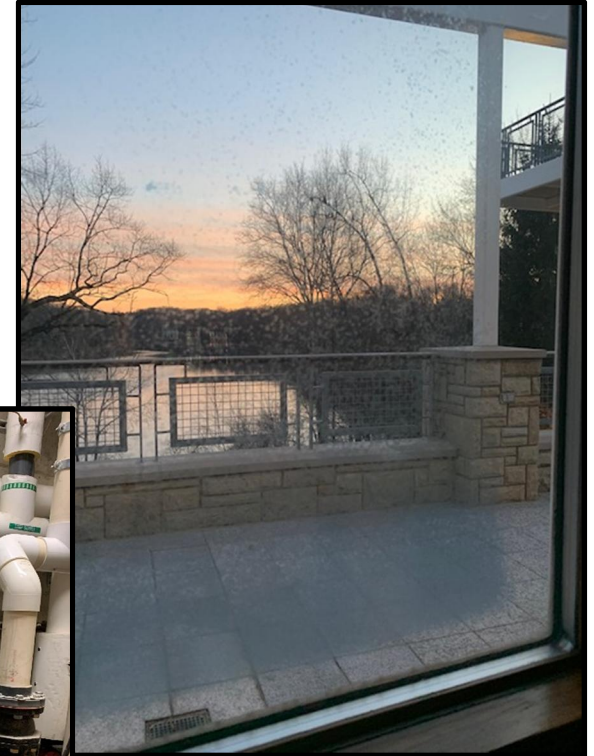
- \$50,000 Budgeted
- Parking Lot
 - Construction of a new 22 vehicle aggregate parking lot with entrance drive from McGuffey Road



2020 Capital Improvements

Fellows Riverside Gardens Improvements

- \$75,000 Budgeted
 - Endowment Funds
- Davis Education & Visitor Center
 - Upgrades to HVAC/Geothermal system – climate control monitoring & scheduling
 - Replacement of café window
 - Replacement of light fixtures with LED type (Phase 2)
 - Convert elevator emergency phone lines to cellular based system
 - Installation of light deflecting blinds in café
 - Radar scan & analysis to determine integrity of existing flat roofing materials



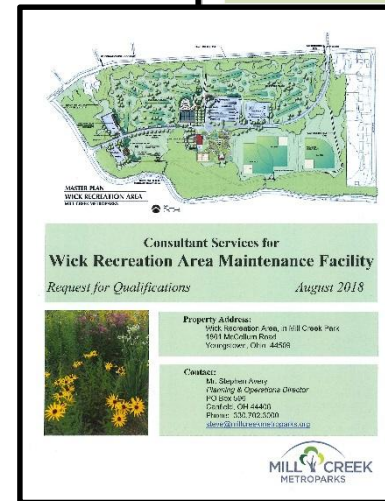
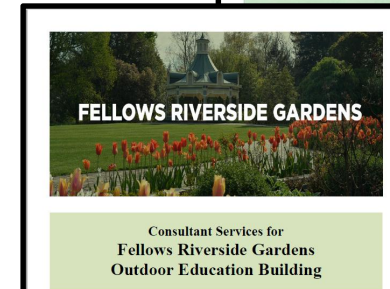
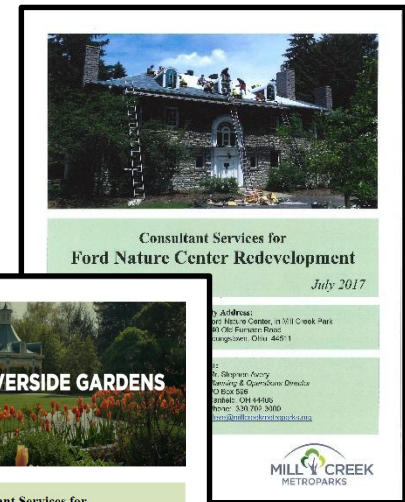
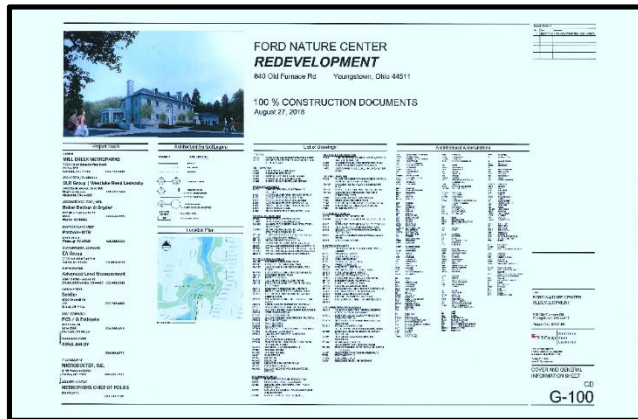
Fellows Riverside Gardens Outdoor Education Building

- **\$300,000 Budgeted**
 - Substantially funded by a Commercial Intertech grant and FFRG endowment (\$200,000)
 - Construction of a new outdoor education building in the Children's Garden



Professional Consultant Services

- **Ford Nature Center Redevelopment**
 - \$150,000 Budgeted
 - Construction Administration
- **Wick Recreation Area Maintenance Facility**
 - \$35,000 Budgeted
 - Construction Administration
- **Wick Recreation Area Warming House**
 - \$50,000 Budgeted
 - Design Development for renovations of the Warming House
 - Preparation of construction drawings



2020 Capital Improvements

Comments or Questions?



EXPLORE. EXPERIENCE. ENJOY.

millcreekmetroparks.org

