



# **MetroParks Board Meeting**

## *2021 Capital Improvement Projects*

Justin Rogers, RLA  
*Planning & Operations Director*

*Last Edited: 1.11.21*



## Presentation Outline

- MetroParks Mission Statement
- Strategic Master Plan
- MetroParks Properties/Facilities
- Long Range Capital Planning
- 2021 Capital Improvements
- Professional Consultant Services
- Comments/Questions?





# Mission Statement

The mission of Mill Creek MetroParks is to provide park, recreational, educational and open space facilities of regional significance. In fulfilling this mission our objectives are:

- To be responsive to community needs
- To be environmentally sound
- To be adaptable
- To be economically feasible

Link to Mission Statement:

<http://www.millcreekmetroparks.org/contact/about/mission-statement/>





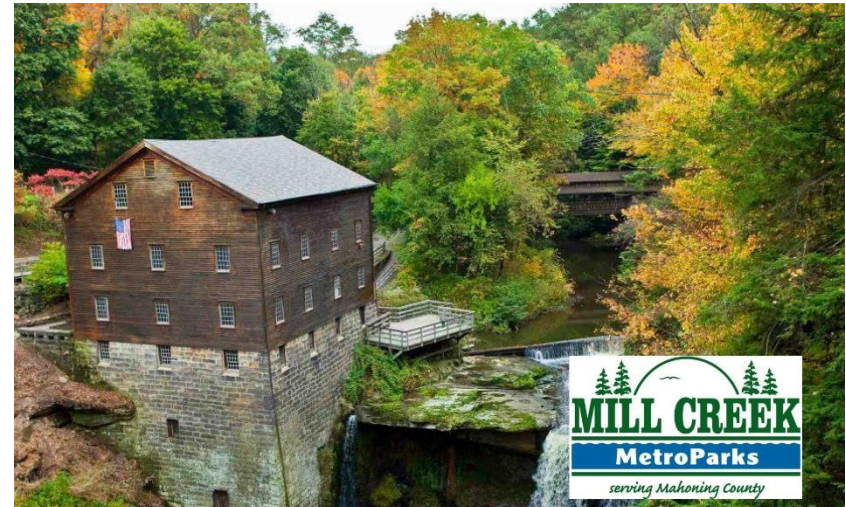
# Strategic Master Plan

- Community Engagement
- Stewardship
- Our People
- Natural Resources
- Recreation & Education
- **Infrastructure**

GOAL: “Create an effective capital improvement and maintenance plan to preserve the historic aspects of Mill Creek MetroParks as well as provide a safe and enjoyable experience.”

Link to Strategic Master Plan:

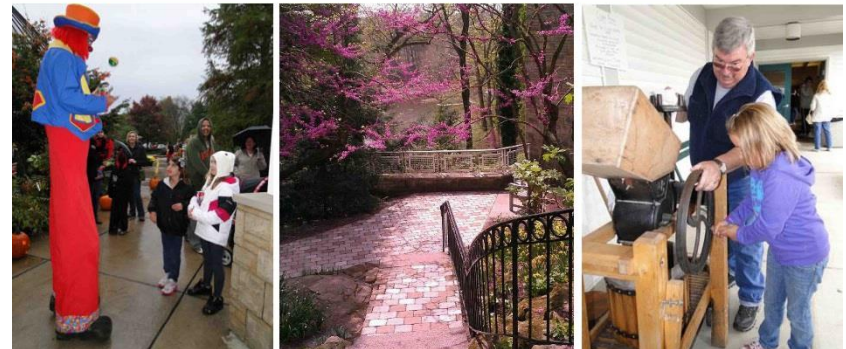
<http://www.millcreekmetroparks.org/wp-content/uploads/2013/11/Mill-Creek-MetroParks-Strategic-Master-Plan-FINAL.pdf>



January 2013

Comprehensive Parks and Recreation  
Strategic Master Plan

pros  
consulting

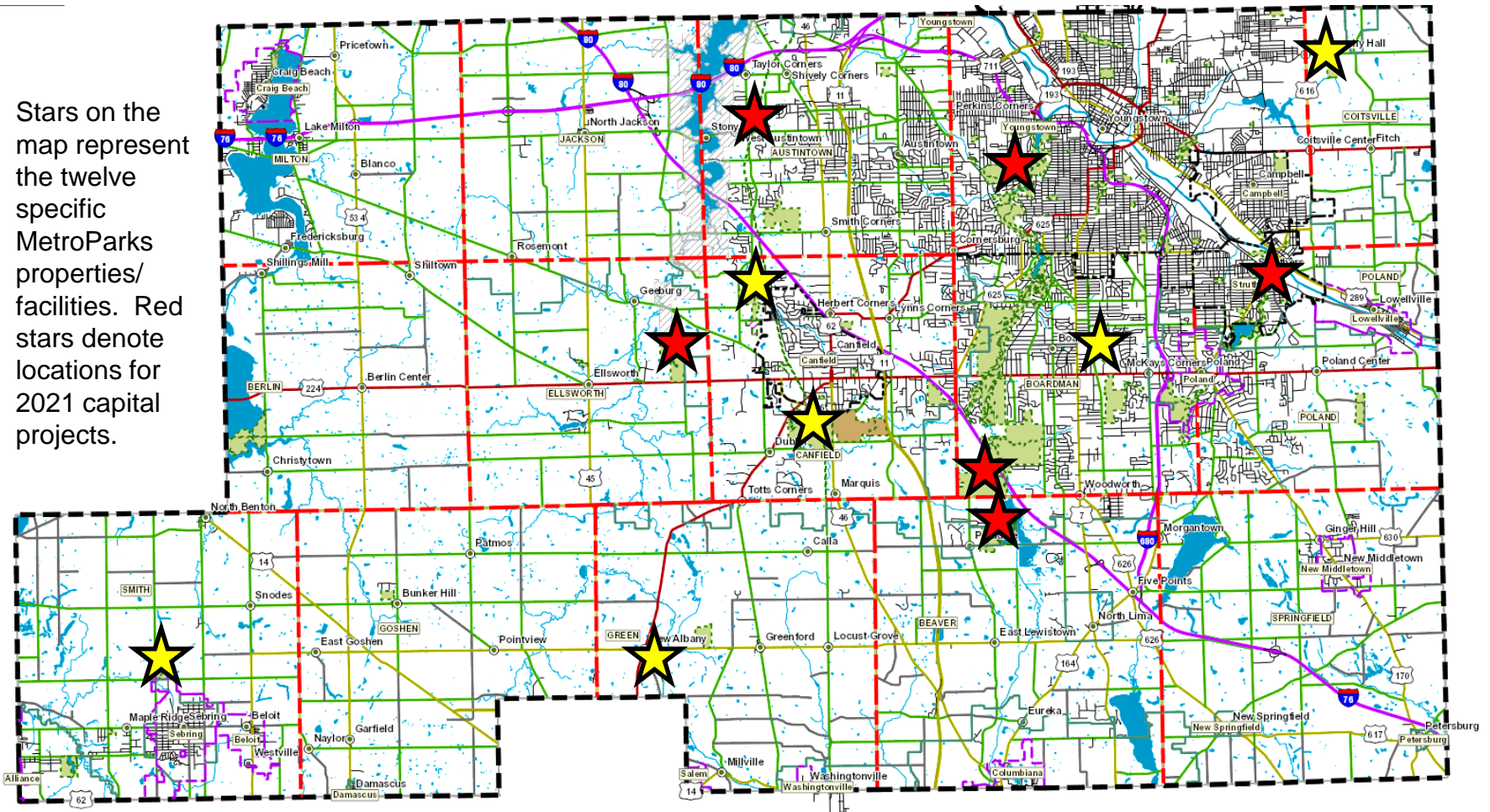


## *2021 Capital Improvements*



# MetroParks Properties/Facilities – Mahoning County

Stars on the map represent the twelve specific MetroParks properties/facilities. Red stars denote locations for 2021 capital projects.





# Mill Creek MetroParks

- **Properties/Facilities**
  - Twelve (12) separate locations
  - 7 Townships
  - 3 Cities
  - 1 Village
- **Land Uses**
  - Active Recreation
  - Passive Recreation
  - Preserves/Natural Areas
  - Working Farm
  - Bikeway
  - Equestrian
- **Statistics**
  - 4,542 acres
  - 20.37 miles of roads
  - 9 vehicular bridges on ODOT inventory; 9 stone arch bridges; 7 pedestrian bridges
  - 20.92 acres of parking lots
  - 27.17 miles hiking trails
  - 17.59 miles of paved multipurpose trails
  - 225,667 square feet of structures
  - 3 large lakes/dams; numerous ponds





# Long Range Capital Improvement Planning

[illegible][illegible][illegible][illegible]

## 2021 Capital Improvements

millcreekmetroparks.org



## Drive Improvements

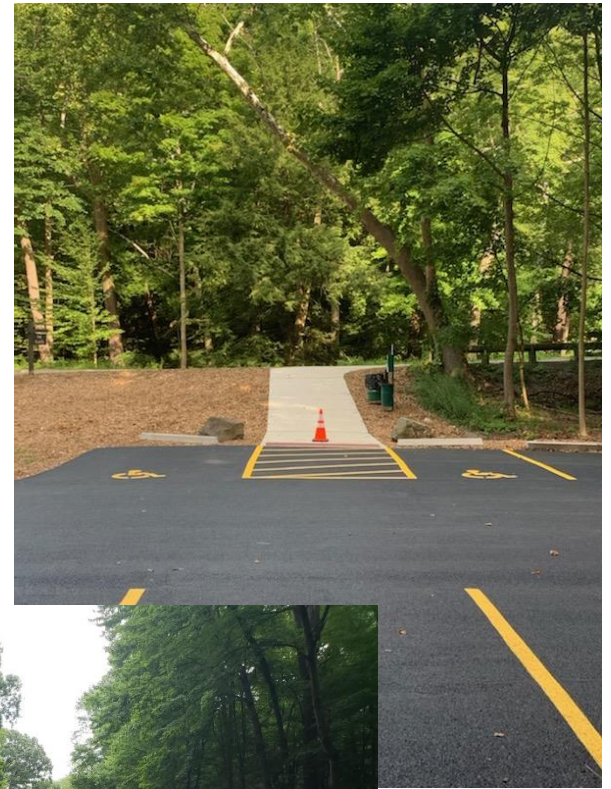
- \$625,000 Budgeted
- East Newport Drive Slope Failure
  - Repair nearly 200 ft. of damaged roadway and shoulder
- East Newport Drive (north)
  - East Newport Dr. - Kreider's Entrance to Kiwatha
  - Storm drainage structure & pipe replacement, ditch excavation/grading, guardrail improvements, asphalt paving, pavement markings, aggregate shoulders
- Annual Preventive Maintenance
  - Reapplication of pavement markings
  - Crack filling
  - Aggregate shoulders





# Parking Lot Improvements

- \$200,000 Budgeted
- Ford Nature Center & Wick Rec. Area Morley Pavilion
  - FNC – Compliment site improvements from FNC Redevelopment project
  - FNC - Improve traffic circulation
  - FNC – Trail connection to East Cohasset Hike & Bike Trail
  - Wick – Compliment site improvements from Wick Service Facility construction project
  - Wick – Improve traffic circulation
  - Both - Excavation, grading, asphalt paving & pavement markings
- Annual Preventive Maintenance
  - Crack filling, asphalt sealing & pavement markings





# Trail Improvements

- \$125,000 Budgeted
- **MetroParks Bikeway**
  - Herbert Road to Kirk Road; Westbury Park Spur Trail
  - Asphalt repair, asphalt resurfacing & aggregate shoulders
- **Vickers Nature Preserve**
  - Equestrian trail improvements
  - Partially funded by private donation
- **Sawmill Creek Preserve Hiking Trail**
  - Construction of bridge, signage, markers
- **Mill Creek Preserve Hiking Trail**
  - Final grading and seeding of hillside trail
- **East Golf Hike & Bike Trail**
  - Improvement of entrances from neighborhood





# Signage Improvements

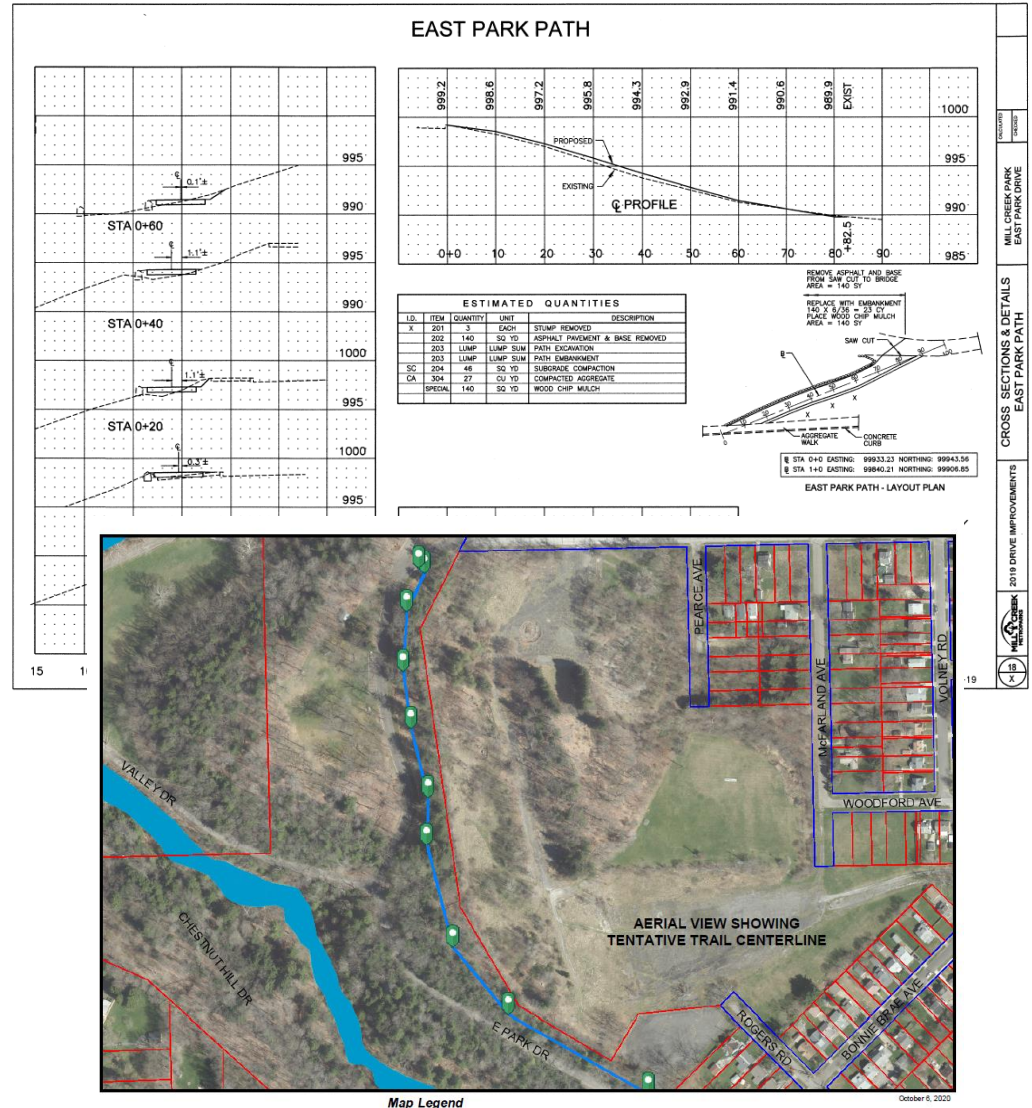
- \$25,000 Budgeted
- Facility Signage
  - Regional facilities
  - Lower Bears Den; Mill Creek Preserve; Mill Creek Park
- Mill Creek Park Road Names & Wayfinding Signage





# East Park Hike & Bike Trail Phase II

- \$170,000 Budgeted
- Transportation Alternatives Program Funding
  - \$136,000
- 1800 LF, 8' wide Asphalt Trail
- Connects Idora Parking Lot to East Cohasset Hike & Bike Trail





# Pavilion Improvements

- \$25,000 Budgeted
- Pioneer Pavilion
  - Roof Replacement
- Pavilions (misc.)
  - Roof Repairs





# Mill Creek Wildlife Sanctuary & Mill Creek Preserve

- \$40,000 Budgeted
- Pond & Dike Improvements
  - Removal of woody vegetation from dikes
  - Reconstruction of dikes due to erosion & rodent damage
  - Replacement of drainage control piping & structures
  - Replacement of bird nesting boxes
- Vegetative Invasive Species Control





# Ford Nature Center: Exhibit Construction

- \$360,000 Budgeted
- Nature Education Exhibits
  - Exhibit Hall and 1<sup>st</sup> Floor





# Lanterman's Mill Site Improvements

- \$10,000 Budgeted
- MCMPF Annual Endowment Funds
- Access and trails, fencing, observation areas, covered bridge improvements, etc.





# MetroParks Farm Improvements

- \$14,500 Budgeted
- MCMPF Short Term Funds
- Education Building Improvements, Barn Improvements, Access and Trail Improvements, etc.





# Golf Course Improvements

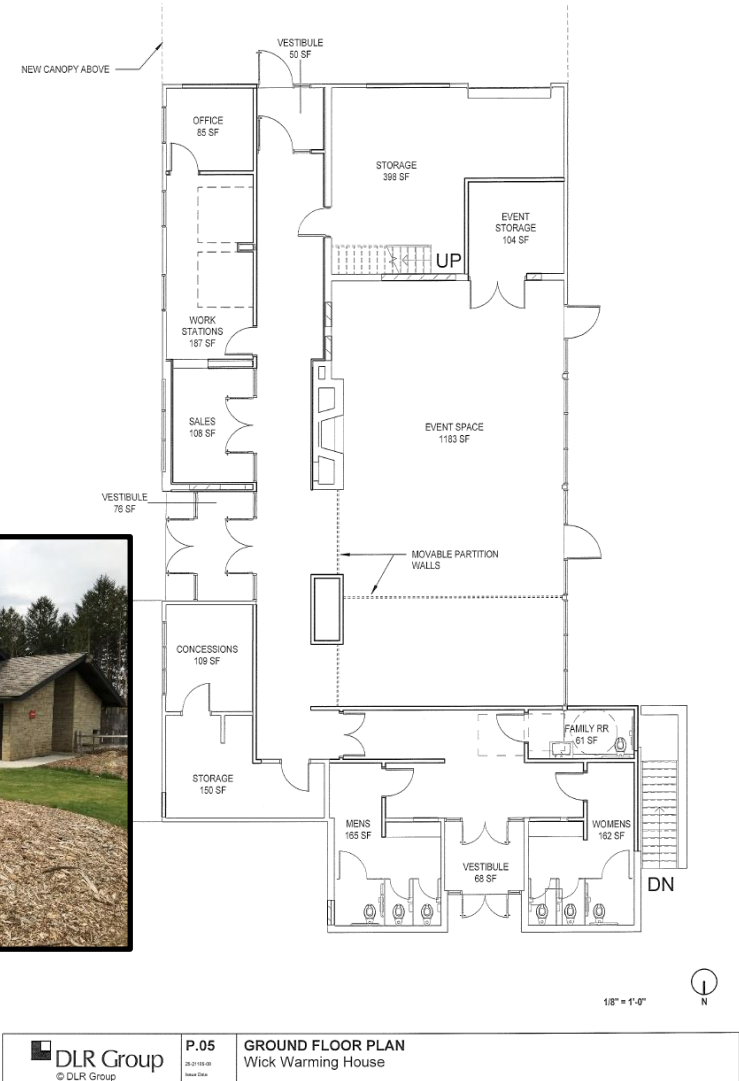
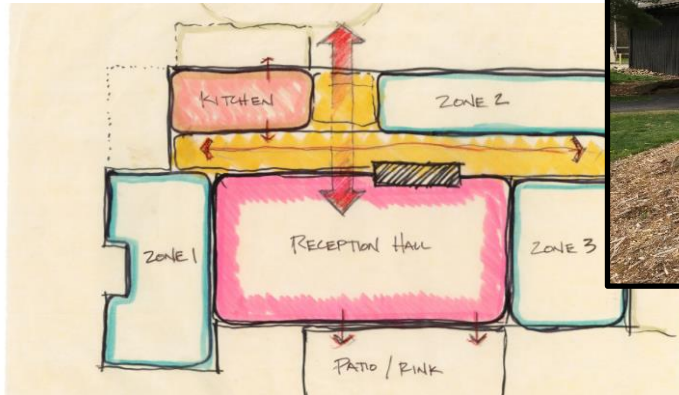
- \$7,000 Budgeted
- MCMPF Annual Endowment Funds
- Tree Replacements, Signage Improvements, Fieldhouse Improvements





# Wick Recreation Area: Warming House Renovations

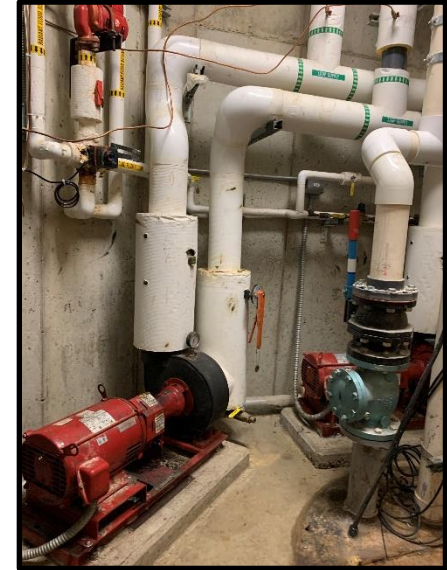
- \$800,000 Budgeted
- Redevelopment of Warming House and Adjacent Site Improvements
  - Redesigning space for multi-functional public/private use
  - Create 4-season spaces
  - Public Programming
  - Private Rentals
  - Recreation Offices
  - Improved Services





# Fellows Riverside Gardens Improvements

- \$110,000 Budgeted
  - Endowment Funds
- Davis Education & Visitor Center & Rose Garden Improvements





# Fellows Riverside Gardens: Outdoor Education Building

- \$400,000 Budgeted
  - Partial carryover from 2020
  - Substantially funded by a Commercial Intertech grant and FFRG endowment
  - Construction of a new outdoor education building in the Children's Garden





# Professional Consultant Services

- Annual Road Improvement Design
  - \$35,000 Budgeted
  - East Glacier Drive Slope Failure
  
- Wick Recreation Area Warming House
  - \$50,000 Budgeted
  - Construction Administration



# Comments or Questions?



EXPLORE. EXPERIENCE. ENJOY.

[millcreekmetroparks.org](http://millcreekmetroparks.org)





## Drive Improvements

- \$300,000 project
- Awarded in 2020
- **East Newport Drive & Valley Drive**
  - East Newport Dr. - From Shields Rd. to Kreider's Entrance
  - Valley Dr. - From East Park Dr. to Suspension Bridge
  - Partially funded through biennial ODOT Road Tax Allocation (\$123,316)
  - COMPLETED - Storm drainage structure & pipe replacement, ditch excavation/grading, guardrail improvements,
  - YET TO COMPLETE - Asphalt paving, pavement markings, aggregate shoulders

## Bridge Improvements

- \$200,000 project
- Awarded in 2020
- **Old Orchard Bridge**
  - Located on Chestnut Hill Drive in Mill Creek Park
  - Substantially funded through a FHWA Surface Transportation Block Grant (\$160,000)
  - Waterproof the bridge decking, repair concrete walks and timber railings, cleaning and tuck-pointing stone masonry and asphalt paving

*2020 CARRY OVER Capital Improvements*