

**Mill Creek MetroParks
Fellows Riverside Gardens**
123 McKinley Avenue
Youngstown, OH 44509
330.740.7116

GPS Coordinates:
41.000375, -80.676356

Picnicking is NOT permitted at the Gardens. Picnic tables are located throughout the MetroParks.

Fellows Riverside Gardens
Free and open daily, dawn until dusk

**D.D. and Velma Davis
Education & Visitor Center**
Tuesday – Sunday, 10 am – 5 pm
Closed: Mondays & Observed Holidays

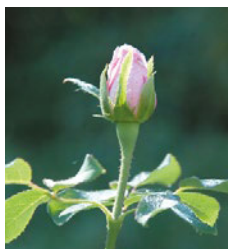
Shop In The Gardens
Garden Café
Antonucci Horticulture Library
Weller Gallery
John C. Melnick, M.D.
Mill Creek Park Museum

Please inquire about:

Weddings & Occasions
**Friends of Fellows Riverside
Gardens Membership**



millcreekmetroparks.org



MILL CREEK METROPARKS

Fellows Riverside Gardens Map

Welcome to Fellows Riverside Gardens

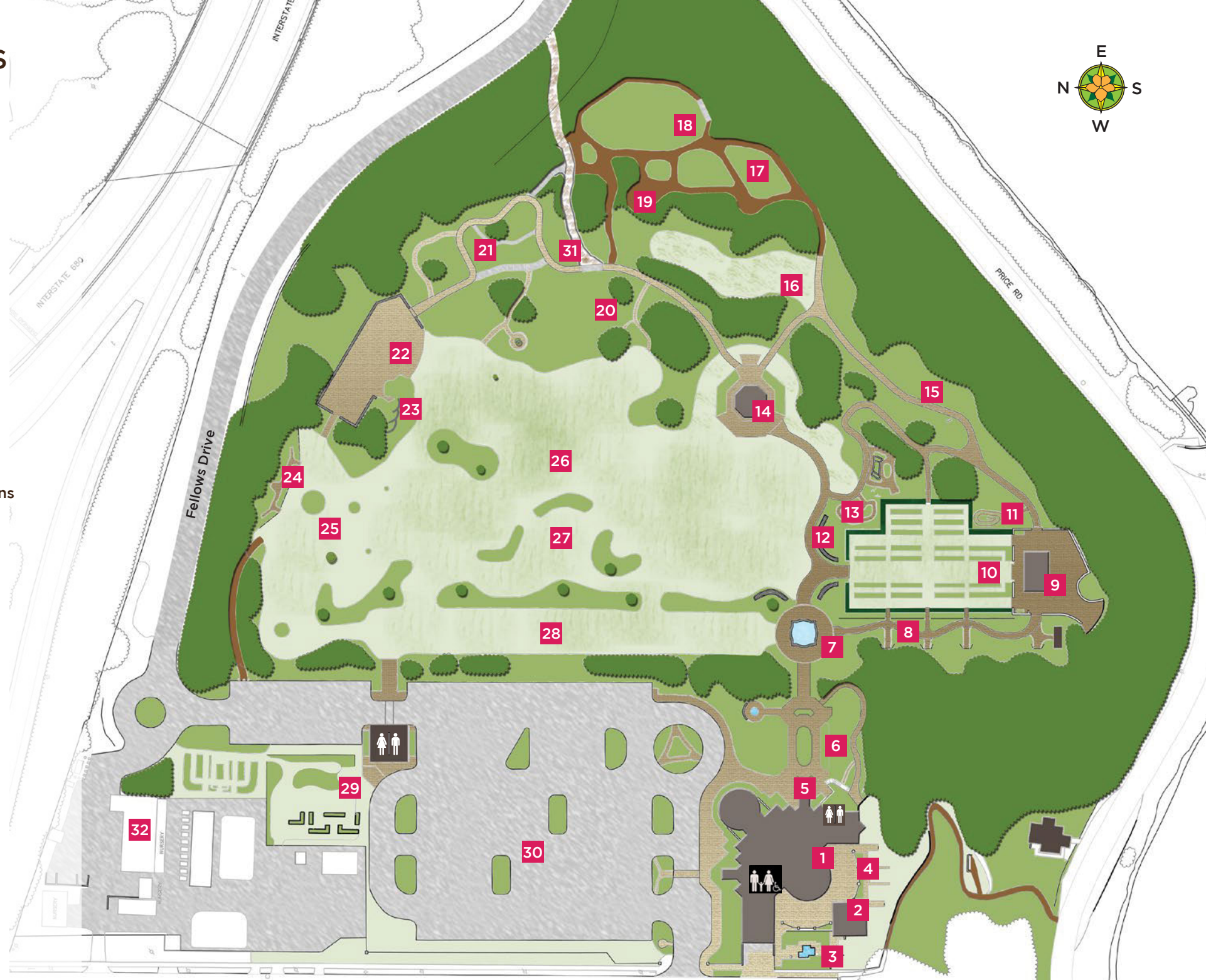
Take your time exploring Fellows Riverside Gardens. Use this map to help guide you to points of interest and featured activities throughout the Gardens. We hope you enjoy your visit and look forward to welcoming you back often for future visits and special events.



- 1. D.D. and Velma Davis Education & Visitor Center:** Art gallery, café, history museum, gift shop, horticulture library. Meeting and banquet rooms. Educational classrooms.
- 2. Arseny Melnick Observation Tower:** View Lake Glacier and the Gardens
- 3. Beeghly Garden:** Cherry trees, potted plants and The Kneeling Girl fountain
- 4. Watson White Garden:** White flowering plants
- 5. DeYor Concourse:** Seasonal displays of bulbs and annuals
- 6. Schaff-Comita Shade Garden:** Plants which thrive in low light, natural and cultivated shade areas
- 7. Seasonal Celebration Plaza:** Sommer Fountain with benches for garden viewing in all directions
- 8. Muransky Perennial Walk:** Colorful perennials, bulbs and shrubs on display throughout the seasons
- 9. South Terrace and Kidston Pavilion:** A unique setting for weddings and events. The view of Lake Glacier is a favorite for photography.
- 10. Joanne F. Beeghly Rose Garden:** Over 1,300 hybrid tea, floribunda and grandiflora roses blooming between June & October
- 11. Christina's Garden Labyrinth:** Experience the beauty of plants on a personal level
- 12. English and Miniature Roses:** Plantings in raised beds outlined by annuals
- 13. Herb and Fragrance Garden:** Spicy aromas of herbs and sweet scents abound in these spaces
- 14. Beeghly Gazebo:** A popular wedding venue surrounded by beds of old-fashioned roses, daylilies, iris and peonies
- 15. Narcissus, Rhododendron and Woody Plant Collections:** Daffodils, rhododendrons, azaleas, viburnums and native shrubs with attractive
- 16. Outdoor Gallery:** Exhibit area for art in a natural setting
- 17. Ohio Woodland Garden:** Native Ohio trees, shrubs and shade wildflowers
- 18. Quarry Garden:** Plants and a trail remain after harvesting stone over 100 years ago
- 19. The Gathering:** Stones from the area create seating for discussions and educational opportunities
- 20. Blue Garden:** Blue-leaved hostas, blue-flowering annuals, perennials and bulbs
- 21. Hillside Garden:** Unusual conifers thrive here
- 22. North Terrace:** An urban view of the city. Prominent structures include Youngstown State University's Beeghly Stadium, Stambaugh Auditorium and St. Elizabeth's Hospital
- 23. Heather Garden:** Winter-blooming heaths and summer-blooming heathers
- 24. Trial Garden:** Newest varieties of flowering annuals and vegetables on display
- 25. Beech Collection:** Varieties including European and the stately American beech
- 26. Great Lawn:** A gently sloping hill to complement the surrounding trees and colorful beds
- 27. Seasonal Display Beds:** Colorful bulb displays in spring and vibrant annuals through mid-October
Dahlia Garden: Beautiful blooms of all sizes & colors blooms from spring through fall
- 28. Long Mall:** A lush architectural feature lined with blooms from spring through fall
- 29. Family Garden:** Whimsical educational planting experiences for the young and young at heart. A showcase for honeybee hives.
- 30. Parking Lot Beds and Geothermal Fields:** Low maintenance and drought resistant plantings. A geothermal field with 42 wells under the pavement that naturally heats and cools the Davis Center.
- 31. Dry Stream/Surface Water Overflow:** Dry stream channels water during heavy rainfall events
- 32. Horticulture Service Area (No public access):** Production and grounds operations

FELLOWS RIVERSIDE GARDENS

1. D.D. and Velma Davis Education & Visitor Center
2. Arseny Melnick Observation Tower
3. Beeghly Garden
4. Watson White Garden
5. DeYor Concourse
6. Schaff-Comita Shade Garden
7. Seasonal Celebration Plaza
8. Muransky Perennial Walk
9. South Terrace and Kidston Pavilion
10. Joanne F. Beeghly Rose Garden
11. Christina's Garden Labyrinth
12. English and Miniature Roses
13. Herb and Fragrance Garden
14. Beeghly Gazebo
15. Narcissus, Rhododendron and Woody Plant Collections
16. Outdoor Gallery
17. Ohio Woodland Garden
18. Quarry Garden
19. The Gathering
20. Blue Garden
21. Hillside Garden
22. North Terrace
23. Heather Garden
24. Trial Garden
25. Beech Collection
26. Great Lawn
27. Seasonal Display Beds/Dahlia Garden
28. Long Mall
29. Family Garden
30. Parking Lot Beds and Geothermal Fields
31. Dry Stream/Surface Water Overflow
32. Horticulture Service Area (No public access)



← To Mahoning Avenue

McKinley Avenue Entrance